

**YELLOW RIVER FORUM
2012**

**Multi level cooperation
in transboundary river
management**



The Scheldt and Meuse Rivers

***A typical case
of northern Europ***



YELLOW RIVER FORUM 2012



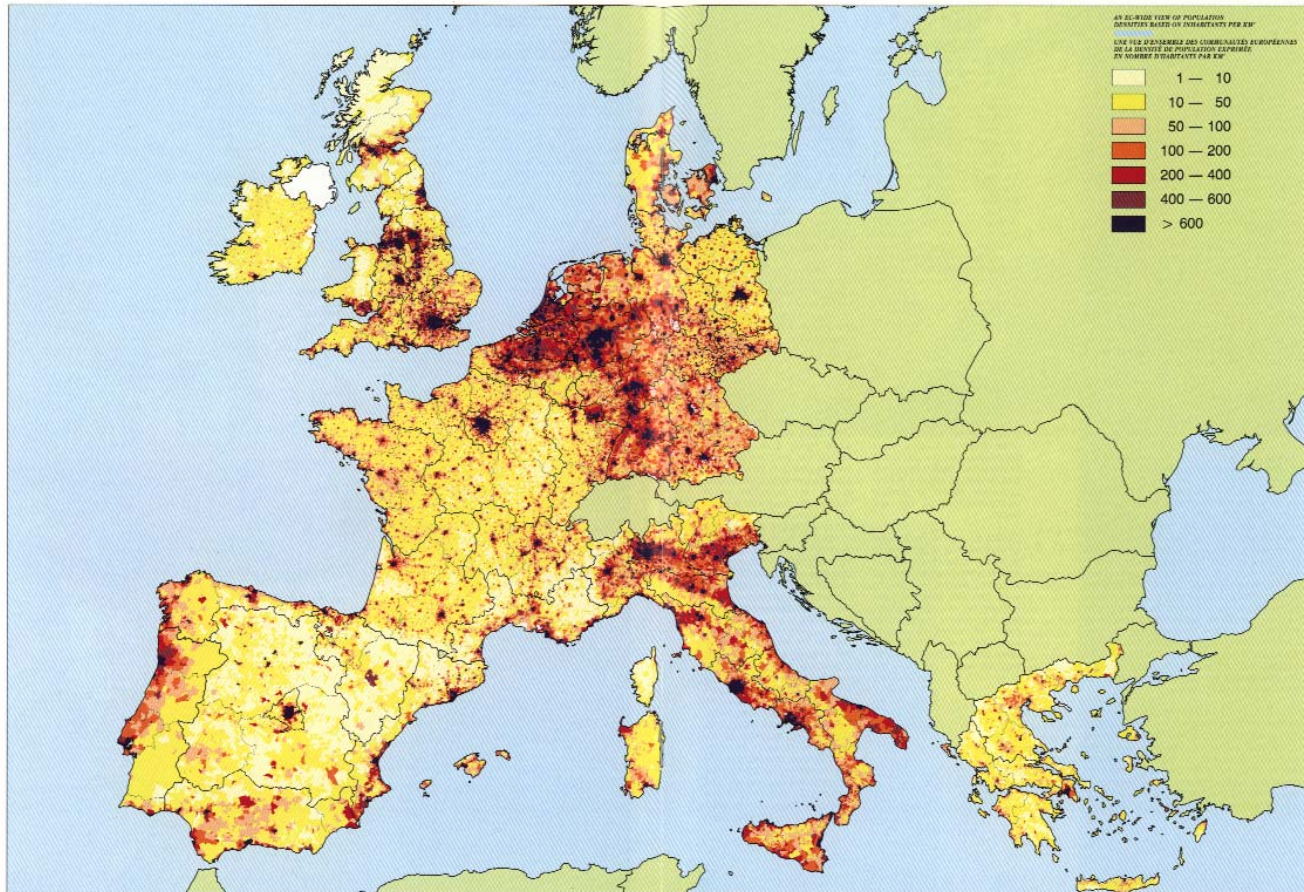
Wallonia ~ Belgium

EUROPE



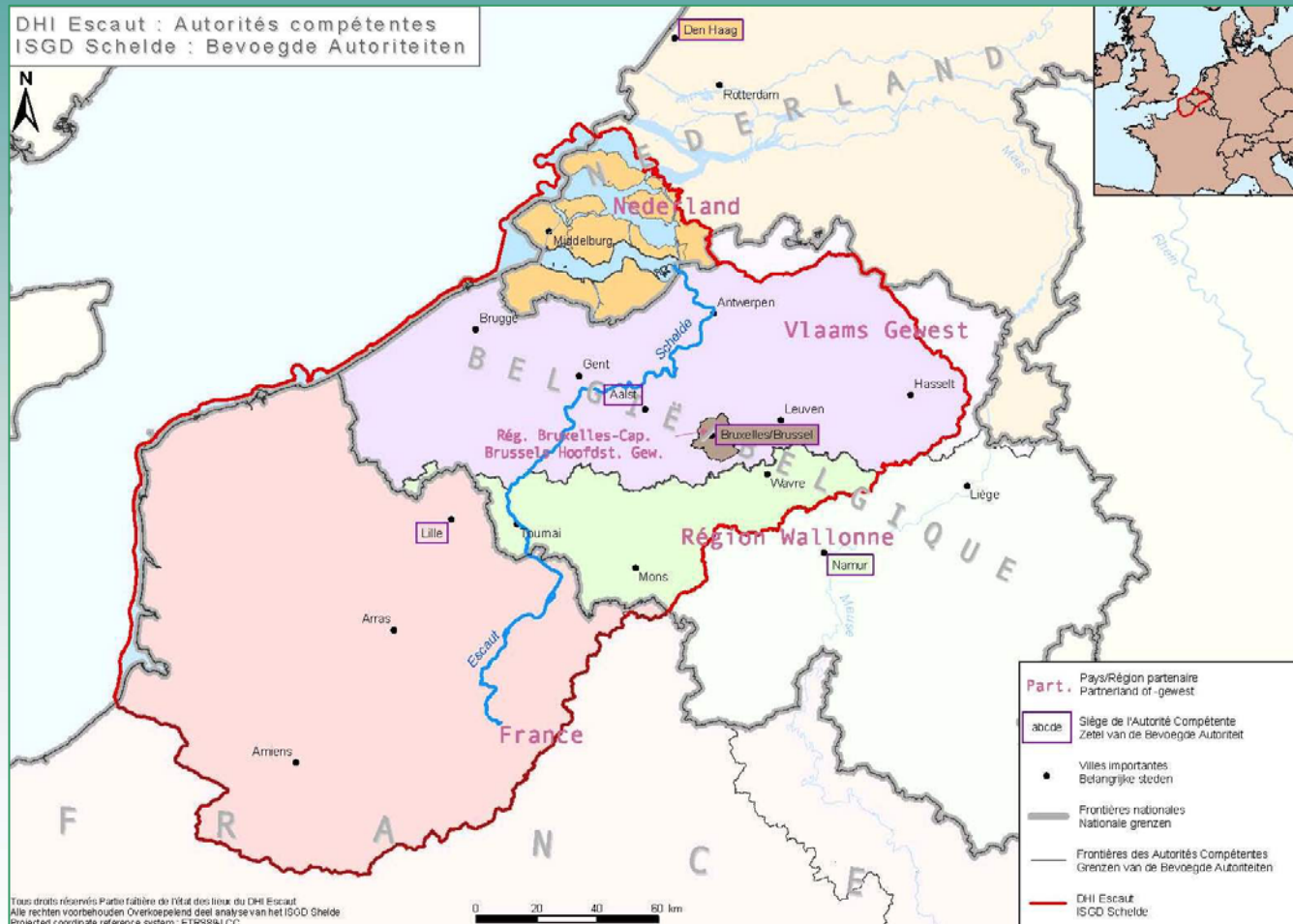
Wallonia ~ Belgium

Demographic context



Wallonia ~ Belgium

The Scheldt Basin



The Meuse Basin



Context

- **100 years of conflicts between parties**
- **Serious water quality problems**
- **Navigation and acces to the sea**
- **Floods**



Negotiations

- **Treaty for the Rhine basin**
- **Parties with different priorities**
- **The Netherlands located at the estuaries**
- **Belgium in the middle**
- **France at the sources**



A complex treaty

**The treaties have been negotiated
Between states and regions!**



The Sheldt

- **States**

- The Netherlands
- France

- **Regions**

- Wallonia
- Flanders
- Brussels-Capital



The Meuse River

- **States**

- The Netherlands
- France
- Germany
- Luxemburg

- **Regions**

- Wallonia
- Flanders
- Brussels-Capital



Specificity

The first time international treaties were signed between Regions of a federal State and other States.



WHY?

- **The regions of Belgium have the constitutional right to sign treaties for the matters devoluted to them.**



WHY?

- In that case each region and state have taken its own responsibilities to improve water management in the river basins with a specific approach for each river.



Domestic cooperation

- **To manage the two international treaties, we need more than the formal cooperation between the parties!**
- **We need the cooperation of the citizens!**



Domestic cooperation

- **Each party has organised consultations and sensibilisations among the populations of the different partners!**
- **The civil society is part of the treaty even if this role is informal!**



Questions?

- **Contact**
- **E-mail: jm.wauthier@wbi.be**
- **Phone: + 32 478 22 35 94**
- **Fax: + 32 2 421 84 81**



