

# Stakeholder participation in case studies



Richard Muller  
Global Water Partnership  
Central and Eastern Europe

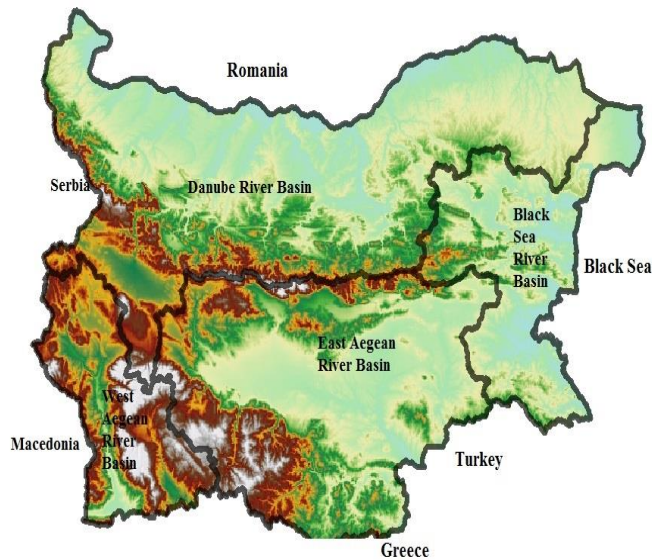
# WaterInnEU

- Applying European market leadership to river basin networks and spreading of innovation on water ICT models, tools and data
- WATER-4a-2014



# Goals

- Analyse outcomes of previous European funded projects
- Standardization and interoperability
- Marketplace as a service
- Virtual marketplace
- Use case studies



Area of EARB - 35 230 km<sup>2</sup>, which is 32% of the country area  
 80 towns - 68% of EARB population and 1696 villages - 32% of EARB population

### EARB population

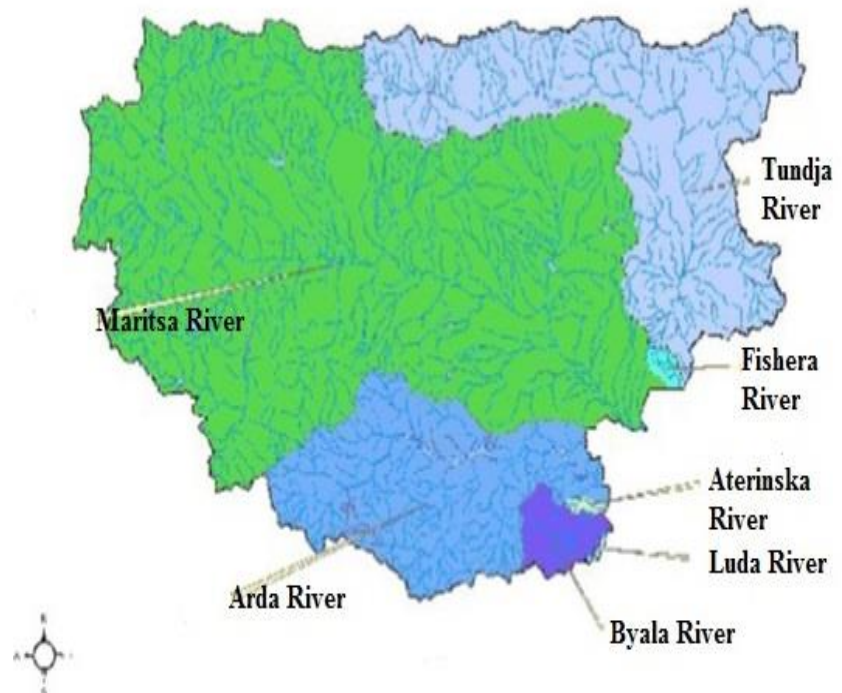
2 197 728 inhabitants on February 2, 2011 - 29.8% of country population

### Maritsa transboundary river

(Bulgaria, Turkey and Greece)  
 with 6 main tributaries which discharge to it abroad.

East Aegean River Basin (EARB) is located in Ecoregion 7 - Eastern Balkan according to Annex XI of WFD.

### Main river basins in East Aegean River Basin



# Sub-basins in EARB

Indices	Maritsa sub-basin	Tundja sub-basin (incl. Fishera river)	Arda sub-basin (incl. Aterinska river)	Byala sub-basin (incl. Luda river)
<b>East Aegean River Basin</b>	Part of Maritsa transboundary river with Greece and Turkey which discharges to Aegean Sea	Transboundary rivers with Turkey and discharge to Maritsa river at Turkish territory	Transboundary rivers with Greece which discharges to Maritsa river at Turkish territory	Transboundary rivers with Greece which discharges to Maritsa river at Greek territory
<b>Territory, km<sup>2</sup></b>	21 292 km <sup>2</sup>	8029 km <sup>2</sup> ,	5273 km <sup>2</sup> ,	636 km <sup>2</sup> ,
<b>Length to boarder, km</b>	321 km	350 km	241 km	72.3 km
<b>Towns and villages in Bulgaria</b>	782	262	685	43

# Problems in Maritsa river basin according to RBMP

- Water abstraction and run-off change
- Nitrates and phosphates pollution of groundwater
- N and P pollution and eutrophication of surface water
- Chemical pollution
- Physical modification of river beds
- Invasive species (not local types)
- Floods

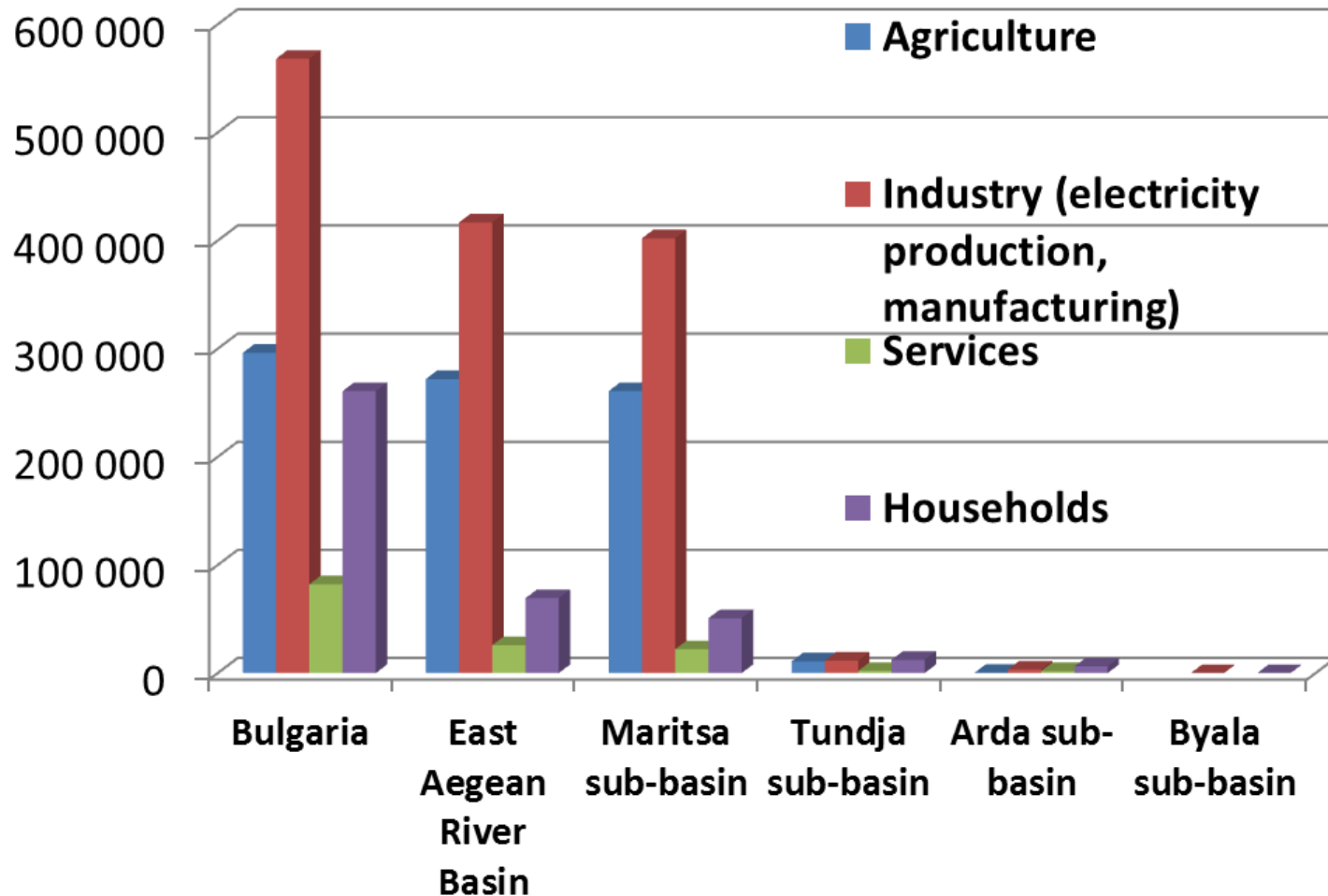


Floods in Bulgaria



Floods in Ederne city, Turkey

# Annual water use by sectors in 2013



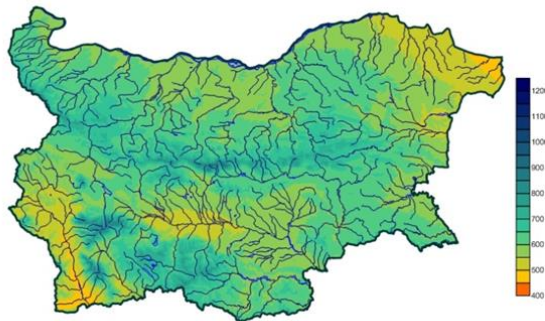
# Pilot case studies

- Develop pilot use case studies
- Test the efficiency and benchmark the marketplace
- Conduct demonstrations in trans-boundary river basins

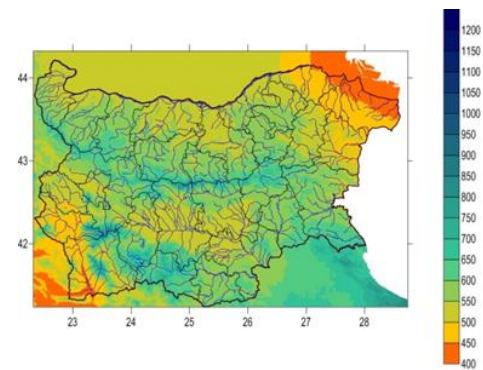


# Pilot case studies

- Involved: GWP CEE, CREAM, TU Delft, RandBee, ANTEA GROUP and Orion Innovations (UK) Ltd
- March - November 2016



Precipitation (mm) in Bulgaria, 1950-2000



Precipitation (mm) in Bulgaria  
at RCP8.5 of IPCC AR5, 2050

# Virtual marketplace experiment and feedback

- Stakeholder identification
- Testing virtual marketplace
- Stakeholder workshop to facilitate matchmaking - river basin authorities vs supply chain partners
- Map out and prioritise key needs

# E-learning course

- E-Learning products will be tested for different users in the Maritsa River Basin
- International brokering workshop in Sofia, Bulgaria in September 2016

# User feedback collection of the marketplace usage

- Online stakeholders consultations
- Results developed into GWP ToolBox case study
- Shortlist of most relevant tools, their screening and validation with the client



Thank you for your attention

[www.waterinneu.org](http://www.waterinneu.org)

[www.gwpcee.org](http://www.gwpcee.org)