

INTERNATIONAL NETWORK  
OF BASIN ORGANIZATIONS

# IMPLEMENTATION OF THE WFD IN CYPRUS

International Conference on the  
Implementation of the WFD

MEGEVE (FRANCE)

21 & 22 SEPTEMBER 2006

Spyros Stephanou

Panayiota Hadjigeorgiou



# Structure of Presentation

- 1) Basic Hydrological Data
- 2) Implementation of the Directive
- 3) Problems
- 4) Conclusions





Image © 2006 TerraMetrics  
Egypt

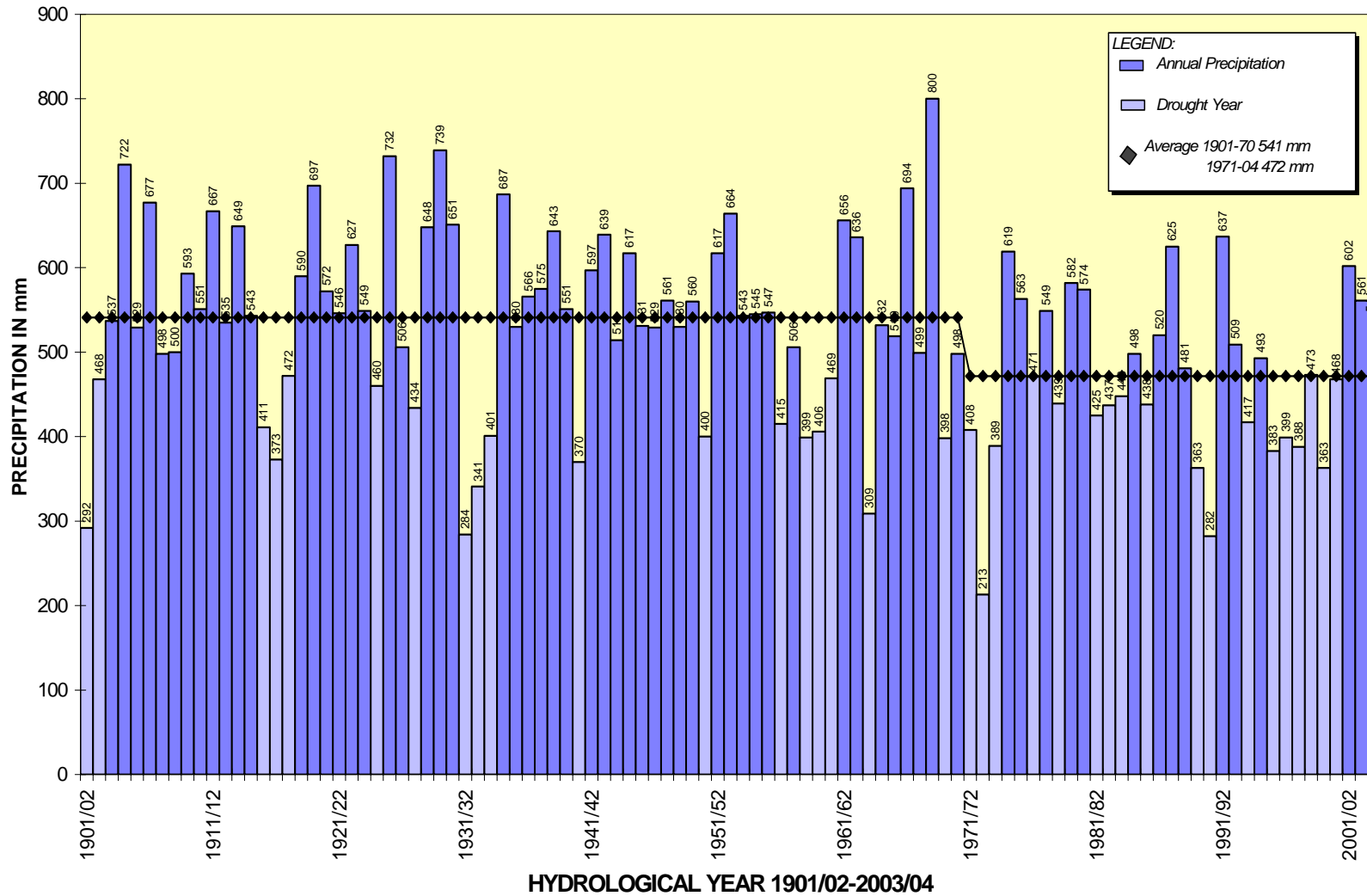


# Basic Data

- Area: 9500 km<sup>2</sup>
- 1 River Basin
- Rainfall from 280 to 1000mm
- No perennial rivers
- No natural fresh water lakes
- Rainfall 1970-2005      470mm  
   1900-1969      540mm
- Drop of 40% in river runoff
- Construction of 20 major dams  
   of total capacity about 300 mcm
- Creation of freshwater lakes



## CYPRUS ANNUAL PRECIPITATION AND AVERAGE 1901/1970-1971/2004 (AREA UNDER GOVERNMENT CONTROL)



# Transportation of Directive

- Law N13(I) 2004 on Protection and Management of Waters
- Minister of Agriculture, Natural Resources and Environment is responsible Head
- The Water Development Department and the Environment Service are the main departments involved



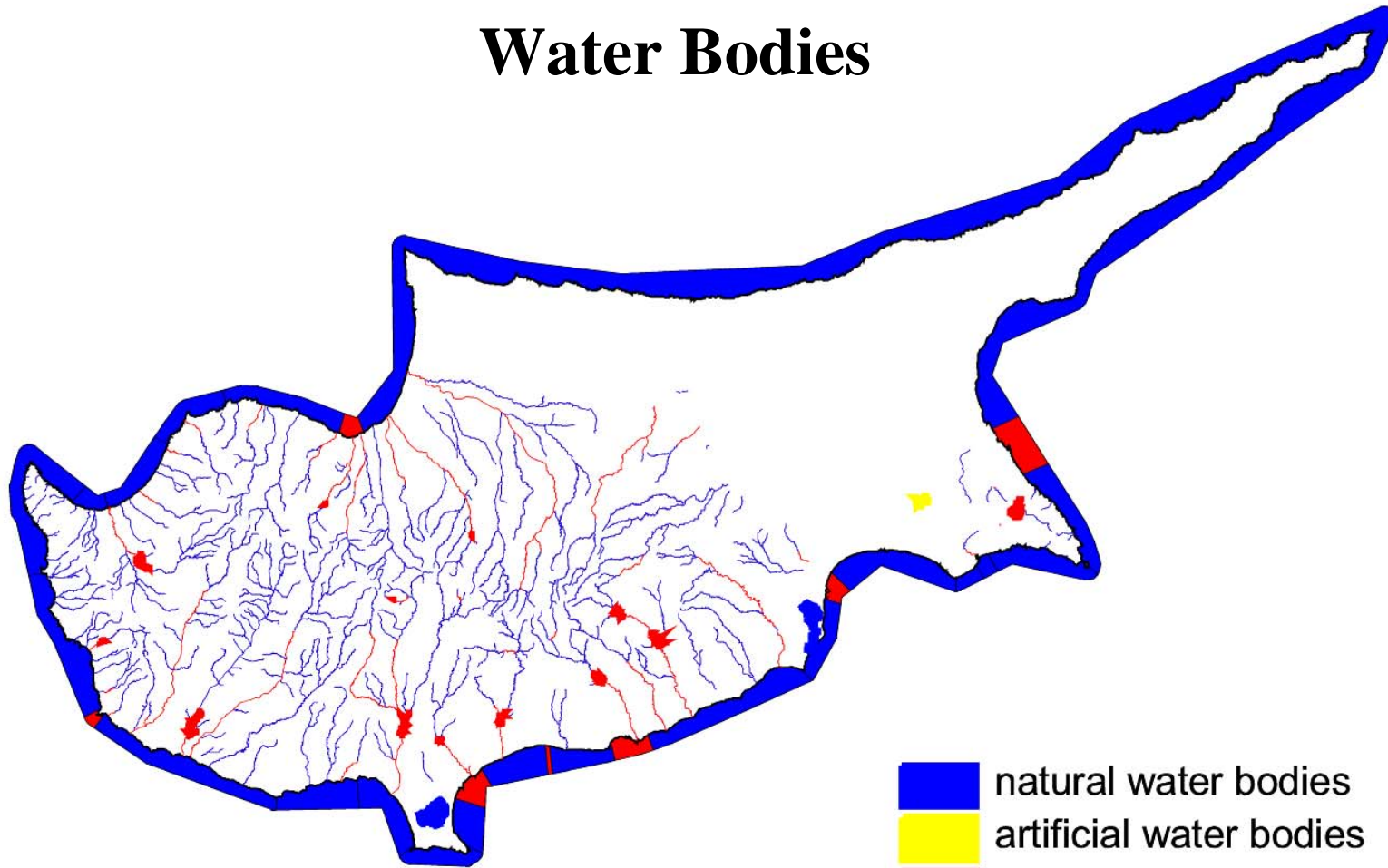
# The work for Articles 5 & 6




## Main issues:

- Overabstraction of Aquifers
- Salinization of Aquifers
- Point source pollution from solid waste landfills, pig farms
- Diffuse pollution from Agriculture
- Problems of Adequate Quantity of water supply, affects ecosystems and water quality
- 49 of the 216 streams are heavily modified and 20% are at risk
- 1 of the 20 lakes and 16% of the coastal waters also at risk



# Water Bodies



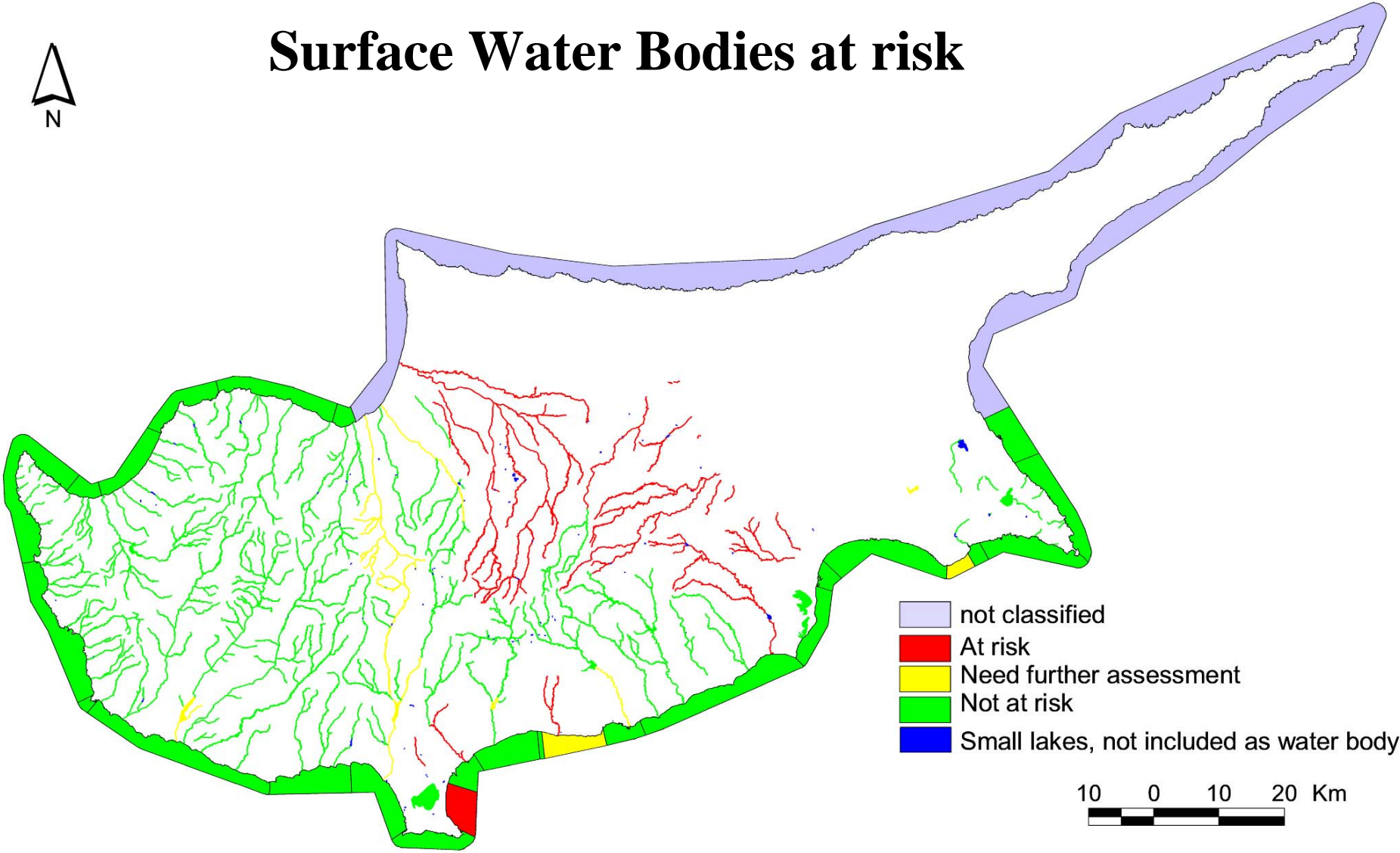
-  natural water bodies
-  artificial water bodies
-  heavily modified water bodies

10 0 10 20 Km





# Surface Water Bodies at risk



# Intercalibration

Cyprus is actively involved

1st Phase completed



# Public Participation

- A Contract is about to be signed for the fulfilment of article 14(1)(a) and (b) within the specified time limits
- The only Public participation practiced so far has been in connection to Environmental Impact Assessments



# Policies for Water Pricing

Consultancy Services  
currently in progress

for designing a Protocol of  
Information and a data bank  
by the end of 2007



# Planned Activities

Consultants will be called in the next months to design the Program of Measures and the Management Plan according to the planned time schedule



# Problems faced

- Lack of sufficient quantitative and qualitative data and of a network of data collection and storing
- Difficulties in cooperation between the various agencies dealing with water and the lack of an overall agency



# Problems

- Shortage of expertise and manpower
- Lack of technical means
- The attitude of the users towards water and towards the environment
- The high cost of implementation



# Special Problems

- Long drought periods and exhaustion of main aquifers
- Need Augmentation with desalination and sewage reuse – even in a desalinated form
- Problems of CO<sub>2</sub> emissions
- Even though Cyprus is characterised as one river basin, the government of Cyprus can not exercise control over 40% of the area





# Conclusions

- The difficult part of the implementation is ahead of us
- It will help in the sustainable management of the Water Resources of the Island
- It presupposes political will, long term planning and change of attitude towards water



THANK YOU

