

ROMANIA



MINISTRY OF ENVIRONMENT
AND WATER MANAGEMENT



1

Implementation of the Water Framework Directive in the Danube River Basin – Romanian approach

Anemarie CIUREA
Dep. Director

The Danube River basin is a cultural and historical centre of Europe –the most international



The Danube River protection Convention -1994, Sofia: The legal frame for co-operation to assure the protection of water and ecological resources and their sustainable use in Danube River Basin

The challenge: social and economic context in DRB


- Regional economic and social disparities
- The particular situation of transition countries and requirements of the EU accession



Objectives and tasks of the ICPDR:

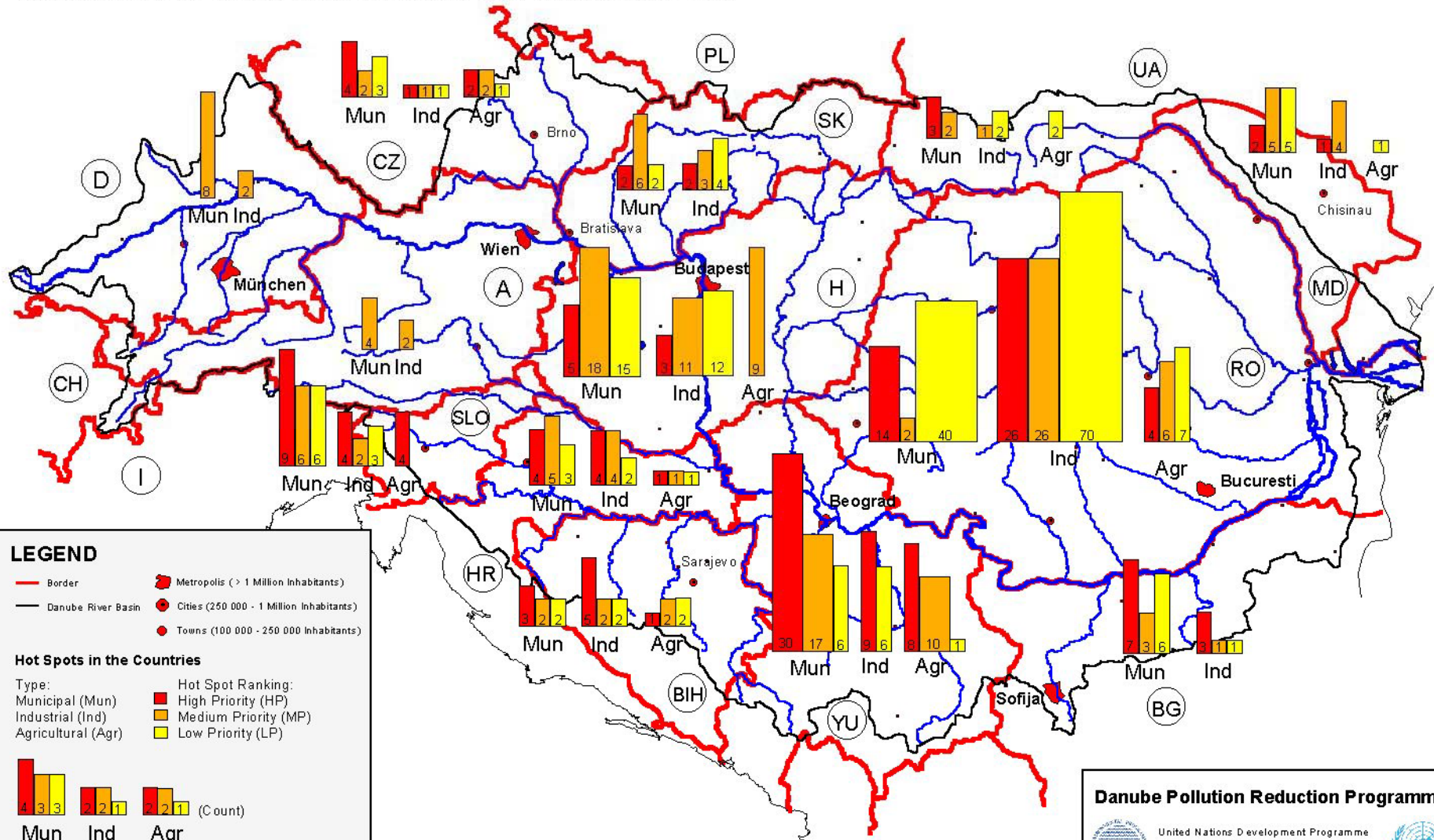
- Ensure sustainable and equitable water management;
- Ensure conservation, improvement and the rational use of surface waters and ground water;
- Control discharge of waste waters, inputs of nutrients and hazardous substances from point and non-point sources of emissions;
- Control floods and ice hazards;
- Control hazards originating from accidents (warning and preventive measures);
- Reduce pollution loads of the Black Sea from sources in the Danube catchment area Dunarea.

Policies and Strategies of Joint Action Programme in the frame of ICPDR

- 
- **River basin management and implementation of EU Water Framework directive;**
 - Emission inventory and pollution reduction ;
 - Restoration of wetlands and flood plains
 - Transnational Monitoring Network (TNMN)
 - Priority substances / recommendation on BAT & BEP;
 - Accident warning system (AEWS) and prevention;
 - Flood control and sustainable flood prevention
 - Domestic and basin wide water balance

Hot spots in Danube River countries

Based on National Planning Workshop Reports 1998, Updates March 1999



LEGEND

- Border
- Danube River Basin
- Metropolis (> 1 Million Inhabitants)
- Cities (250 000 - 1 Million Inhabitants)
- Towns (100 000 - 250 000 Inhabitants)

Hot Spots in the Countries

Type:

- Municipal (Mun)
- Industrial (Ind)
- Agricultural (Agr)

Hot Spot Ranking:

- High Priority (HP)
- Medium Priority (MP)
- Low Priority (LP)

(Count)

Mun Ind Agr

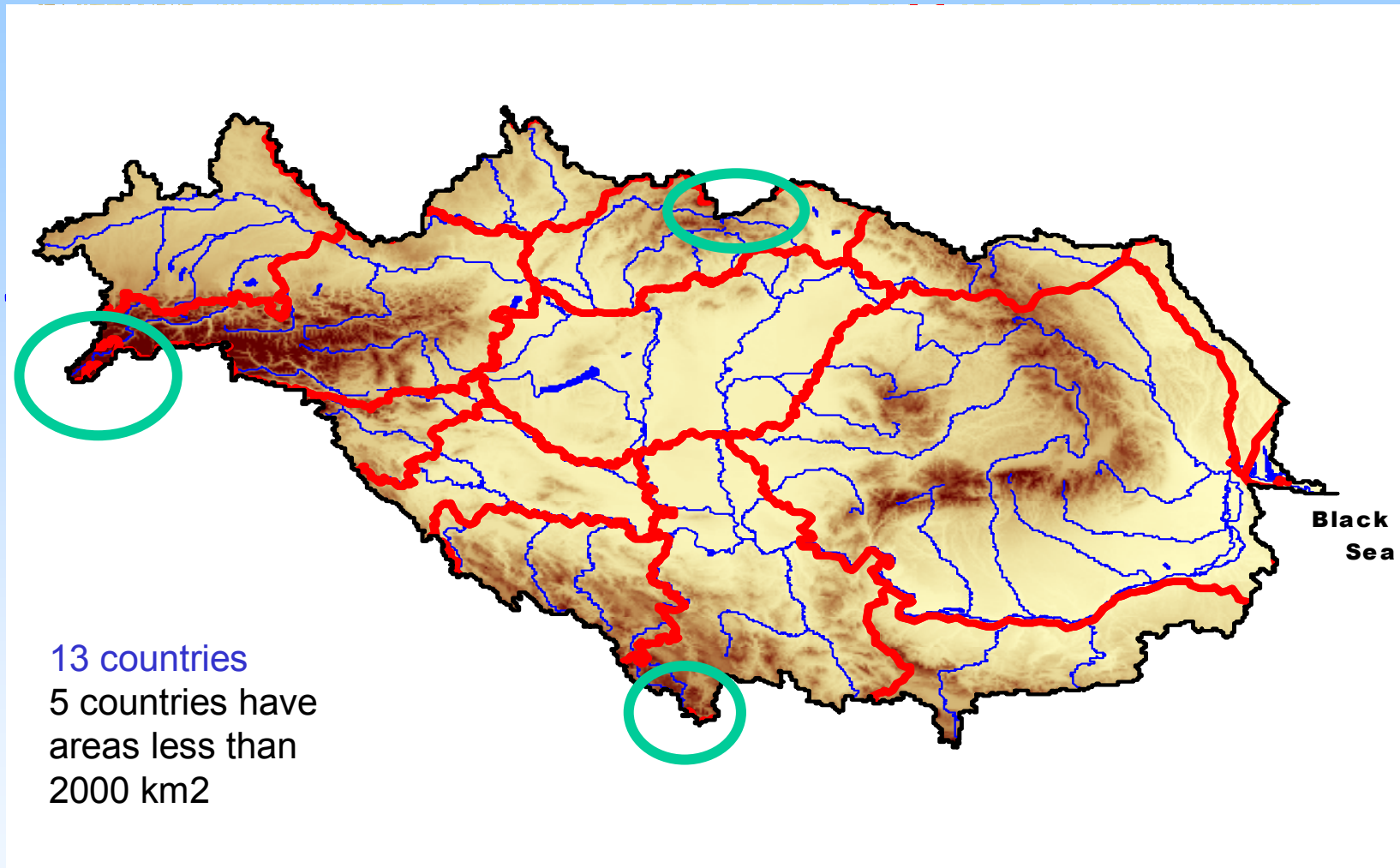
Scale: 1:4 500 000

Danube Pollution Reduction Programme

United Nations Development Programme
Global Environmental Facility
ICPDR - Programme Coordination Unit
1400 Vienna, P.O. Box 500, Austria

Produced by ZINKE ENVIRONMENT CONSULTING
for Central and Eastern Europe, Vienna, 1999
(Cartography by U. SCHWARZ)

Implementation of WFD of EU in DRB Danube River Basin countries



icpdr iksd

International
Commission
for the Protection
of the Danube River

Internationale
Kommission
zum Schutz
der Donau

Danubian countries

➔ **Germany**

➔ **Austria**

➔ **Czechia**

➔ **Slovak Republic**

➔ **Hungary**

➔ **Slovenia**

Croatia

Yugoslavia

➔ **Bulgaria**

➔ **Romania**

Moldova

Ukraine

Bosnia-Herzegovina

ICPDR

Small territories:

Switzerland

➔ **Italy**

➔ **Poland**

Albania

Macedonia

icpdr **iksd**

International
Commission
for the Protection
of the Danube River

Internationale
Kommission
zum Schutz
der Donau

Coordination requirements of the WFD:

Where a river basin district extends beyond the territory of the Community:

“the Member States concerned **shall endeavour to establish appropriate coordination with the relevant non-member State**, with the aim of achieving the objectives of this Directive throughout the river basin district” (Art.3.5)

For coordination of the river basin management plan:

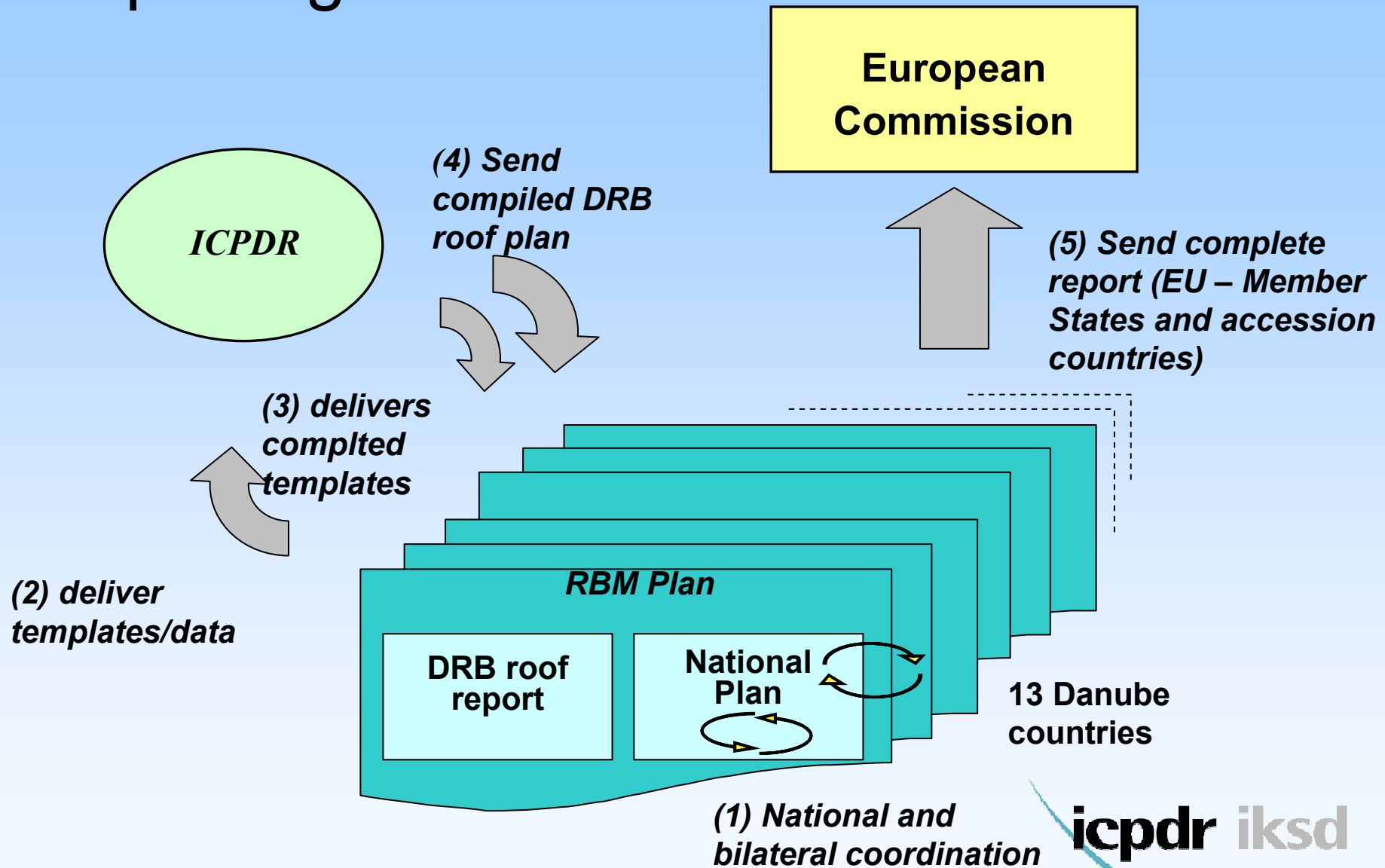
“The member States **shall endeavour to produce a single river basin management plan**, and, where this is not possible, the plan shall at least cover the portion of the international river basin district lying within the territory of the member State concerned”

3rd Plenary Session of the ICPDR

- November 2000 -

- “The **implementation of the EU Water Framework Directive** is considered having the highest priority for the ICPDR.
- The **ICPDR will provide the platform for the co-ordination** necessary to develop and establish the River Basin Management Plan for the Danube River Basin .
- The **Contracting Parties ensure to make all efforts** to arrive at a co-ordinated international River Basin Management Plan for the Danube River Basin.”

Reporting Mechanism



Status of WFD implementation in Romania

- **Romania has committed to elaborate the *River Basin Management Plan* in line with the provisions of the WFD and according to the EC and ICPDR requirements and deadlines.**
- **River Basin Authorities:** 11 Water Directorates
- **International Cooperation:** within the ICPDR
- **Development of the River Basin Management Plan:** Roof report +national report
- **Achievements:** Analysis of the river basin characteristics, Pressures and impacts and Economic analysis, Protected areas

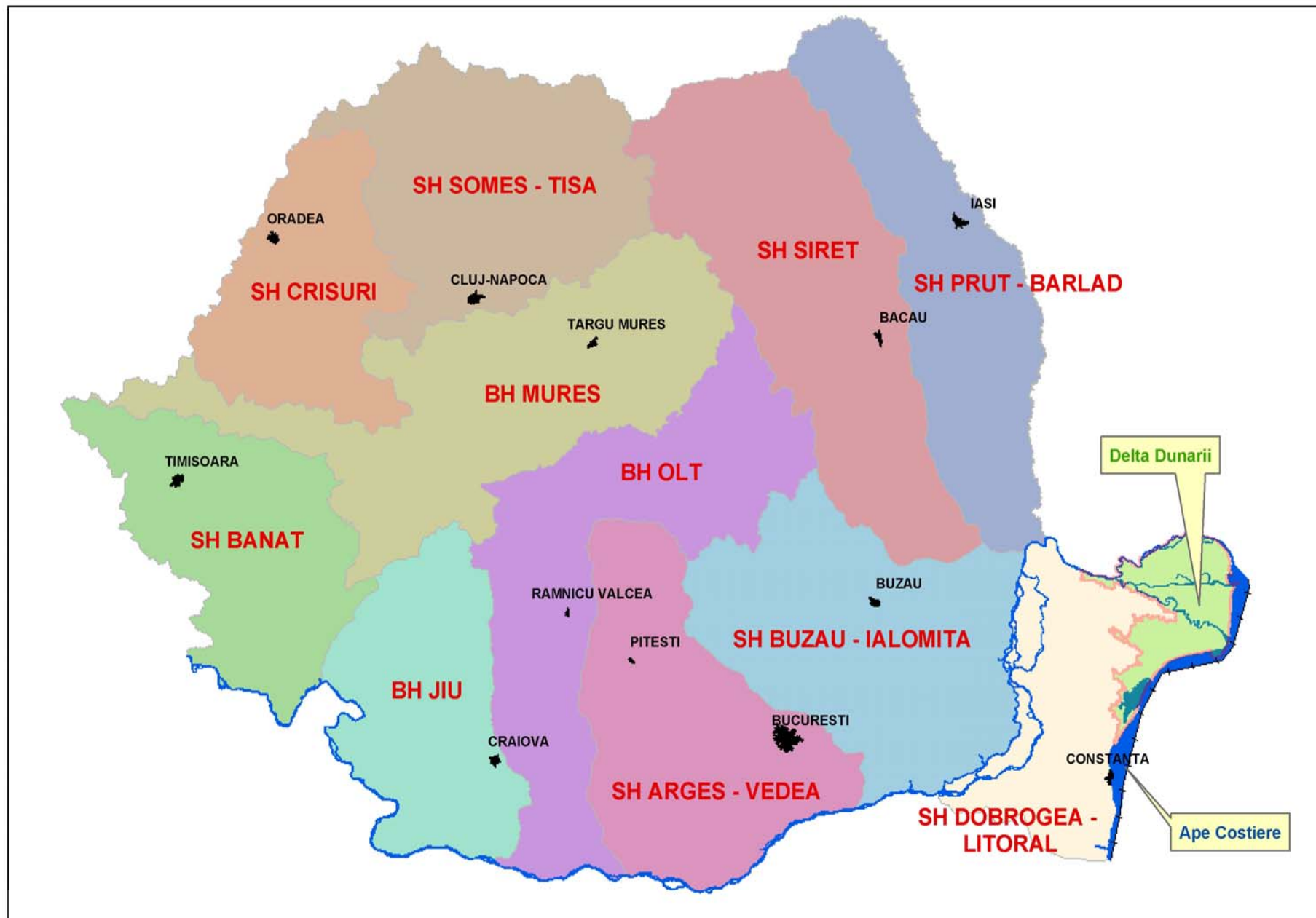
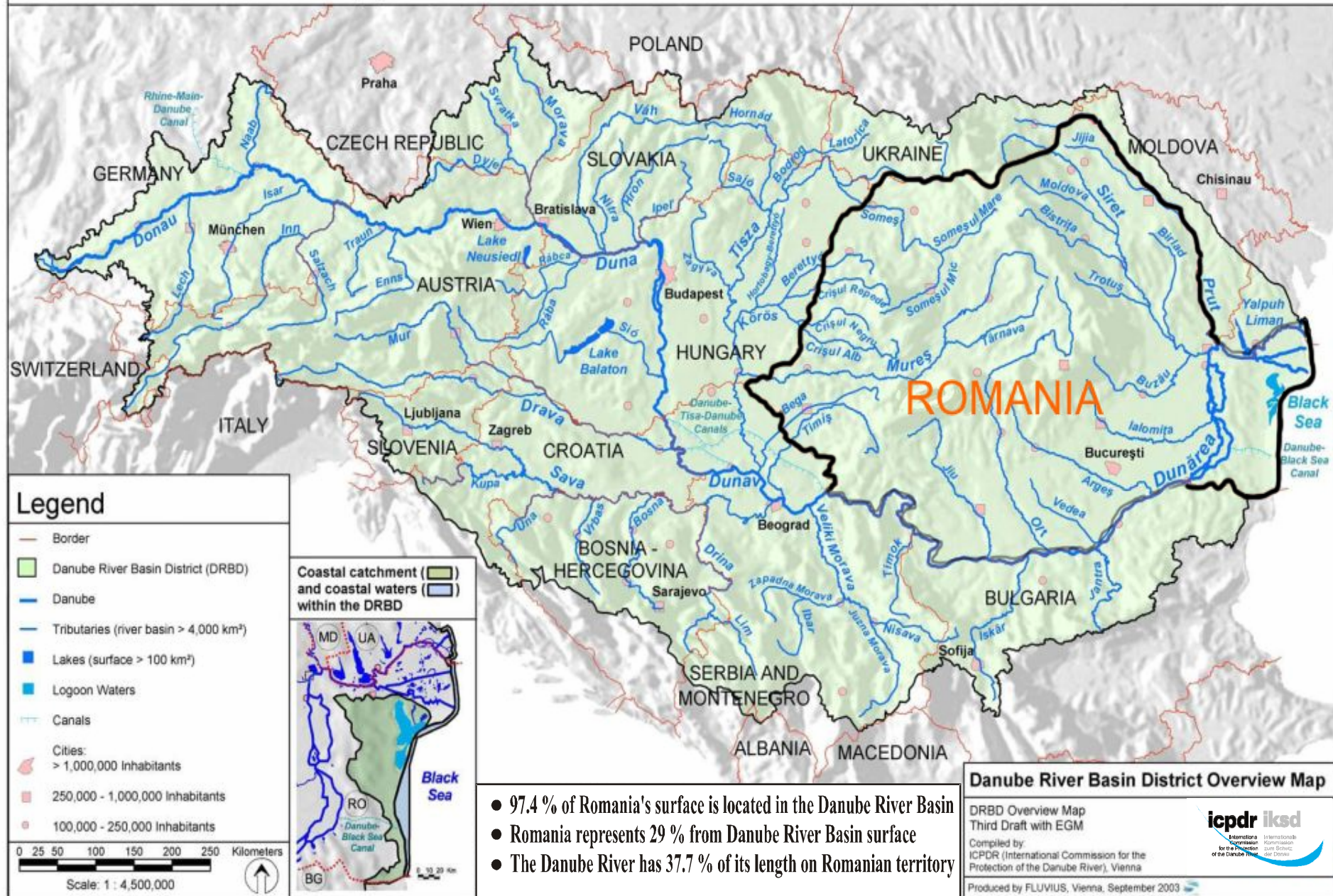


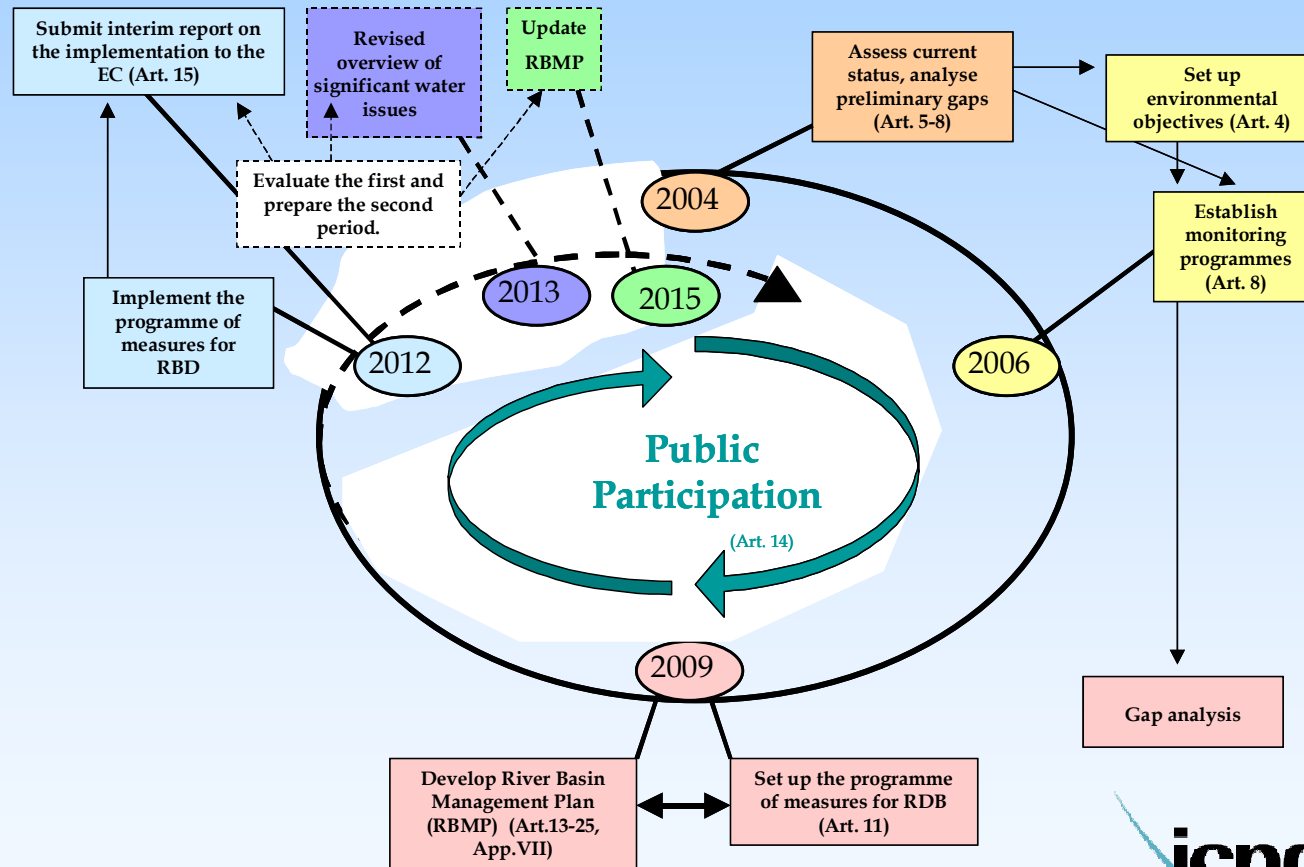
Fig. 2.2 Bazinele / Spatiile hidrografice si Apele Costiere pe care se elaboreaza Planurile de management

Danube River Basin District. Overview map



- 97.4 % of Romania's surface is located in the Danube River Basin
- Romania represents 29 % from Danube River Basin surface
- The Danube River has 37.7 % of its length on Romanian territory

TIME TABLE FOR THE ELABORATION OF THE RIVER BASIN MANAGEMENT PLAN



The stage of implementation of Water Framework Directive 2000/60/EC in Romania

Achieved:

- **Adapting the EU methodologies at specific condition of Romania by National Administration “Apele Romane”: monitoring, designation of water bodies, pressure and impact, GIS, economical analysis, etc.**
- **Elaborating the characterization reports for 2004 for all 11 Romanian sub-basins**
- **Involving all the stakeholders in elaborating the specified tasks**
- **Harmonization of: typology and water bodies with Hungary, Serbia and Montenegro, Bulgaria and Moldova**
- **Elaborating National Characterisation Report 2004 and submeeting for approval to the Basin Comitees**
- **Contribution to the Roof Report Part A - for the future Danube District Management Plans**

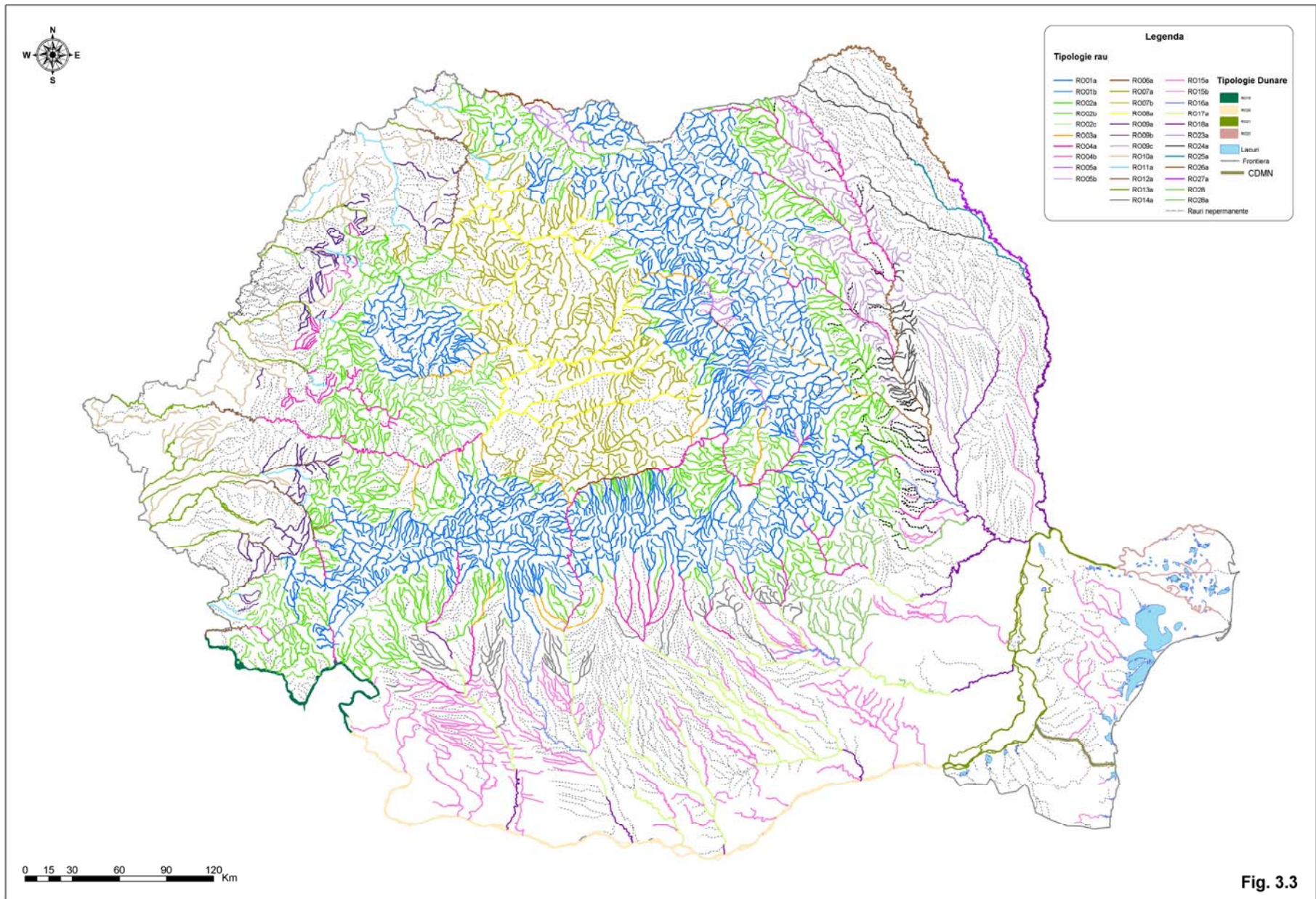


Fig. 3.3

Tipologia cursurilor de apa

Surface Water Bodies

- **3.715 water surface bodies (out of which 8 are for the *Danube river and Danube Delta*)**
- **the average length of the surface water bodies is 21,3 km (*without Danube river*) eg: *Germany: 26 km; Austria: 12 km***
- **out of the total of water bodies, 37 % represent temporary water bodies**
- **it has been identified 6 transitional waters bodies**
 - 3 fluvial (on the Danube arms)
 - 2 lacustrine (Sinoe and Mangalia lakes)
 - 1 marine, and
- **3 coastal water bodies**

Heavily Modified and Artificial Water Bodies

- **For the inland waters:**
 - ✓ **415 (17,6 %) heavily modified water bodies;**
 - ✓ **364 (15,5 %) candidate to heavily modified water bodies;**
 - ✓ **1491 (63,6 %) water bodies which are not heavily modified;**
 - ✓ **77 (3,3 %) artificial water bodies;**
- **For the transitional waters:** 2 water bodies were provisionally identified as HMWB – 1 fluvial water body and 1 lacustrine water body
- **For the coastal waters:** 1 HMWB and 1 candidate to HMWB were identified as well.

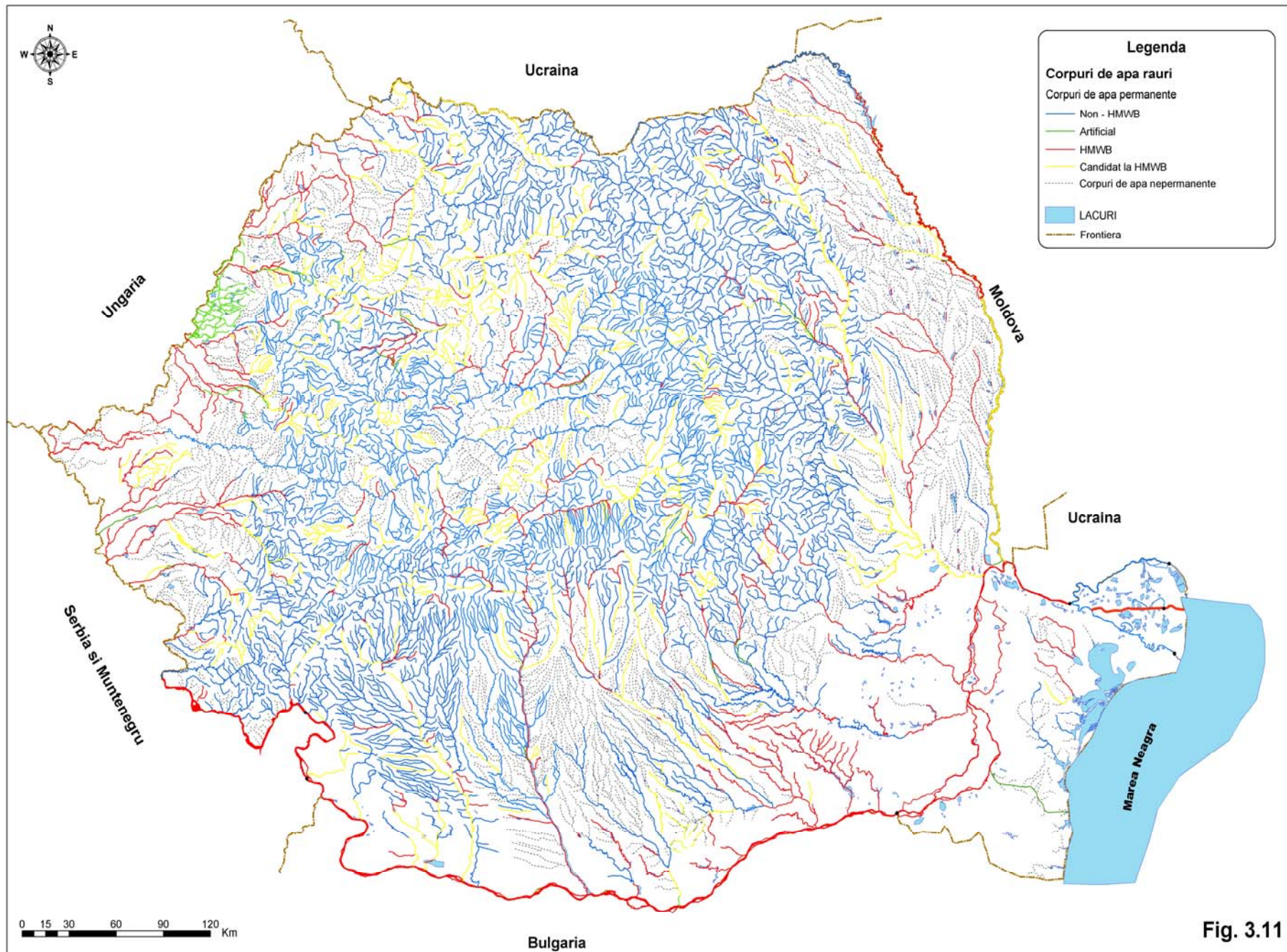
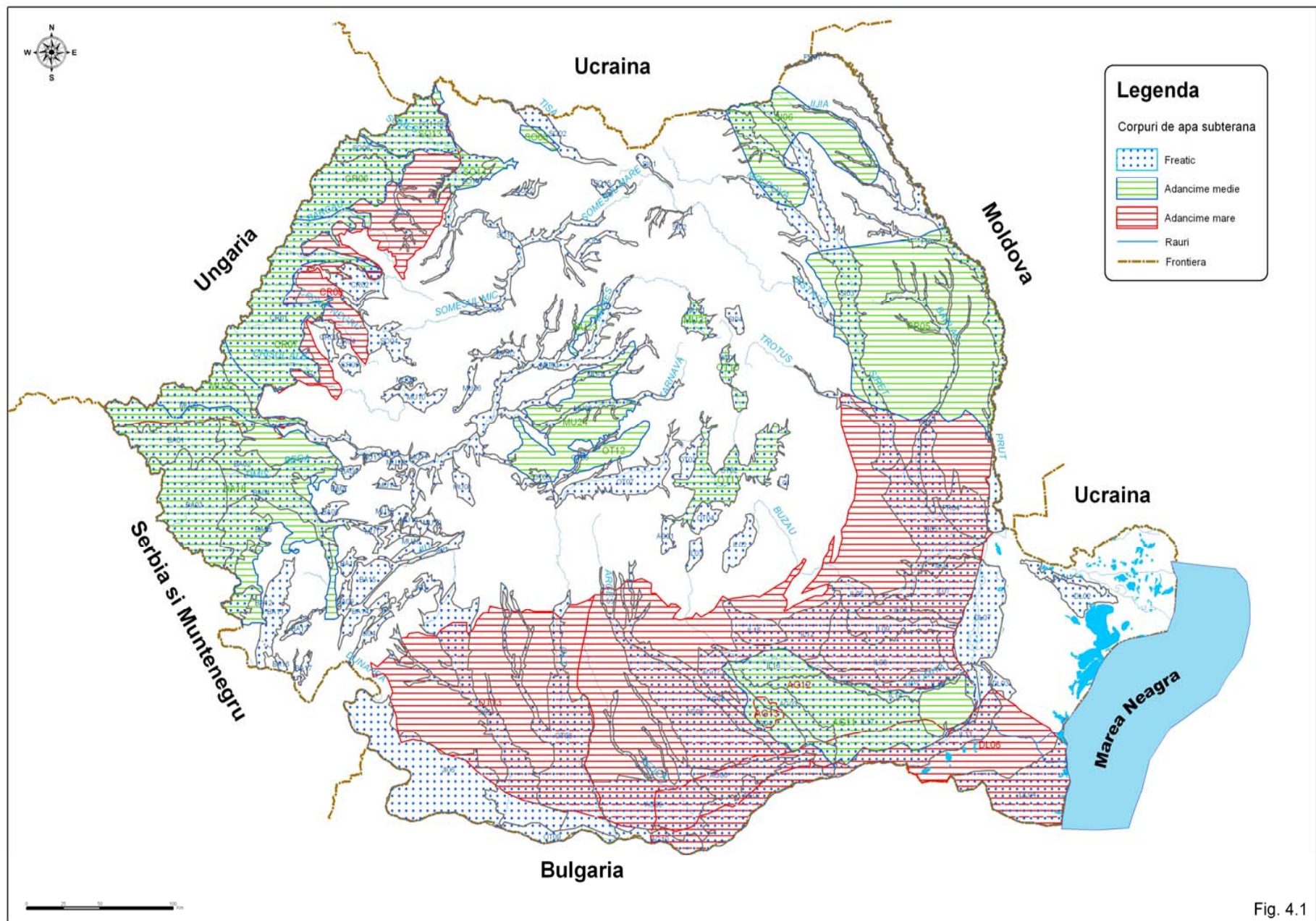


Fig. 3.11

Corpurile de apa de suprafata

Risk assessment criteria

- **The evaluation of the risk of failure to reach the environmental objectives for water bodies takes into account the criteria recommended by ICPDR.**
- **The following risk categories have been taken into account:**
 - **pollution with organic substances;**
 - **pollution with nutrients;**
 - **Pollution with priority substances / hazardous substances;**
 - **hydromorphological alterations.**



Corpuri de apa subterana

The stage of implementation of Water Framework Directive 2000/60/EC in Romania

Ongoing:

- Establishing the reference conditions
- Establishing the limits of quality categories – within the intercalibration exercises
- Adapting the monitoring system
- Establishment of “*Register of protected areas*”, related to aquatic environment (deadline December 2005)

Future : Program of measures



Thank you for your kind attention !!!