

Strategic Directions for Integrated Water Resources Management in the Lower Mekong Basin

Prepared by the Mekong River Commission
under the Basin Development Plan

Basin Development Plan

1. Regional planning process
2. Strategy for water resource development in the LMB
3. Agreed priority projects

**A management
framework
for the LMB**



Basin Development Plan

1. Regional planning process
2. Strategy for water resource development in the LMB
3. Agreed priority projects

**A management
framework
for the LMB**



Dimensions of Mekong water planning

● Sectors

- Agriculture / irrigation
- Hydropower
- Fisheries
- Navigation
- Domestic and industrial water and sanitation
- Flood management
- Watershed management
- Tourism



Dimensions of Mekong water planning

- Sectors
- Issues
 - Rapid change
 - Economic development
 - Poverty alleviation
 - Environment protection
 - Social development and equity
 - Climate variability
 - Cross-sectoral integration
 - Information-based management
 - Regional cooperation
 - Governance



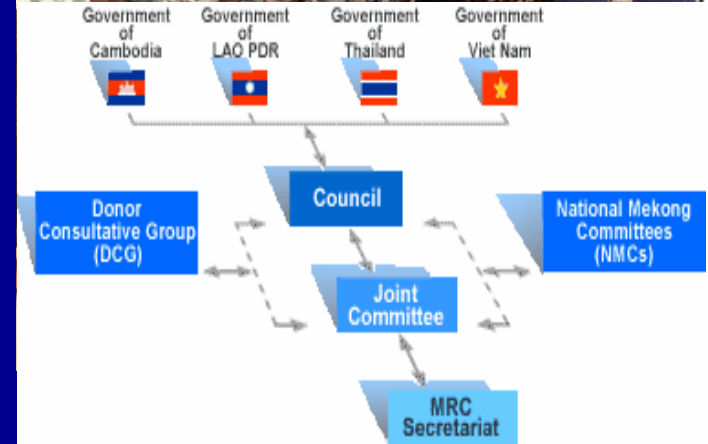
Dimensions of Mekong water planning

- Sectors

- Issues

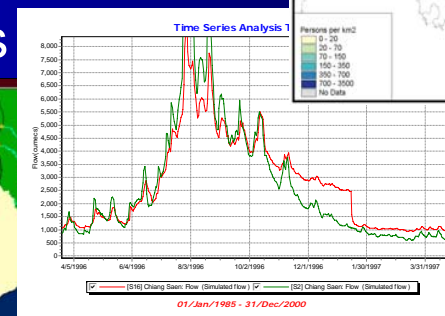
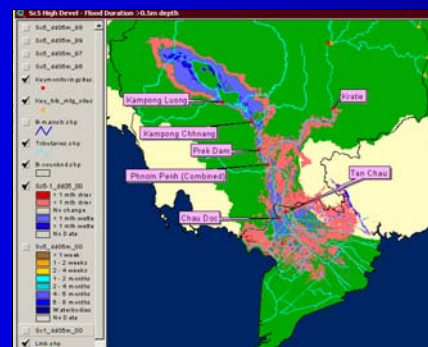
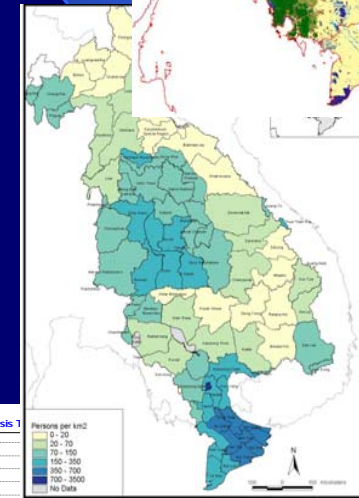
- Actors

- 60 million people
- 4 national governments
- 75 provincial governments
- >300 district and local governments
- irrigator, farmer and fisher groups
- river basin organisations
- regional programs and agencies (WB, ABD, ASEAN...)
- national and local NGOs
- private sector investors



Dimensions of Mekong water planning

- Sectors
- Issues
- Actors
- Knowledge
 - Hydrological monitoring and models
 - Scenario analysis (DSF) of impact of different development paths
 - Impact of flow change on river health and livelihoods
 - Social and economic dimensions



Dimensions of Mekong water planning

- Complex, diverse, interconnected system
 - need to influence all decision makers and investors
 - joint approach is essential, but single “master” plan is not feasible

Common ground

- *dependence on the river*
- *change*
- *information*



Can Tho - Mekong Delta

Integrated Water Resource Management

- Efficiency in water resource development and use
- Equity in water resource allocation
- Environmental protection

Integration and coordination across sectors, regions,
stakeholder interests

Knowledge-driven planning and management

Community and stakeholder participation

Good governance

BDP Paper: Strategic Directions for IWRM in the LMB

Joint statement from MRC countries

- sets out **principles and values** shared by LMB countries regarding water resources development
 - identifies agreed **regional strategic directions** to encourage cooperation and investment
 - Integrates **national strategies and plans**, adds regional perspective
 - promotes **integrated water resource management** in LMB
-
- Consultation and negotiation over 3 years under BDP
 - Broad stakeholder involvement coordinated through NMCs
 - Consultation with regional programs, donors
 - MRC programs, sector reviews

Key result areas



- Economic development and poverty alleviation
- Environment protection
- Social development and equity
- Dealing with climate variability
- Integration through basin planning
- Information-based management
- Regional cooperation
- Governance

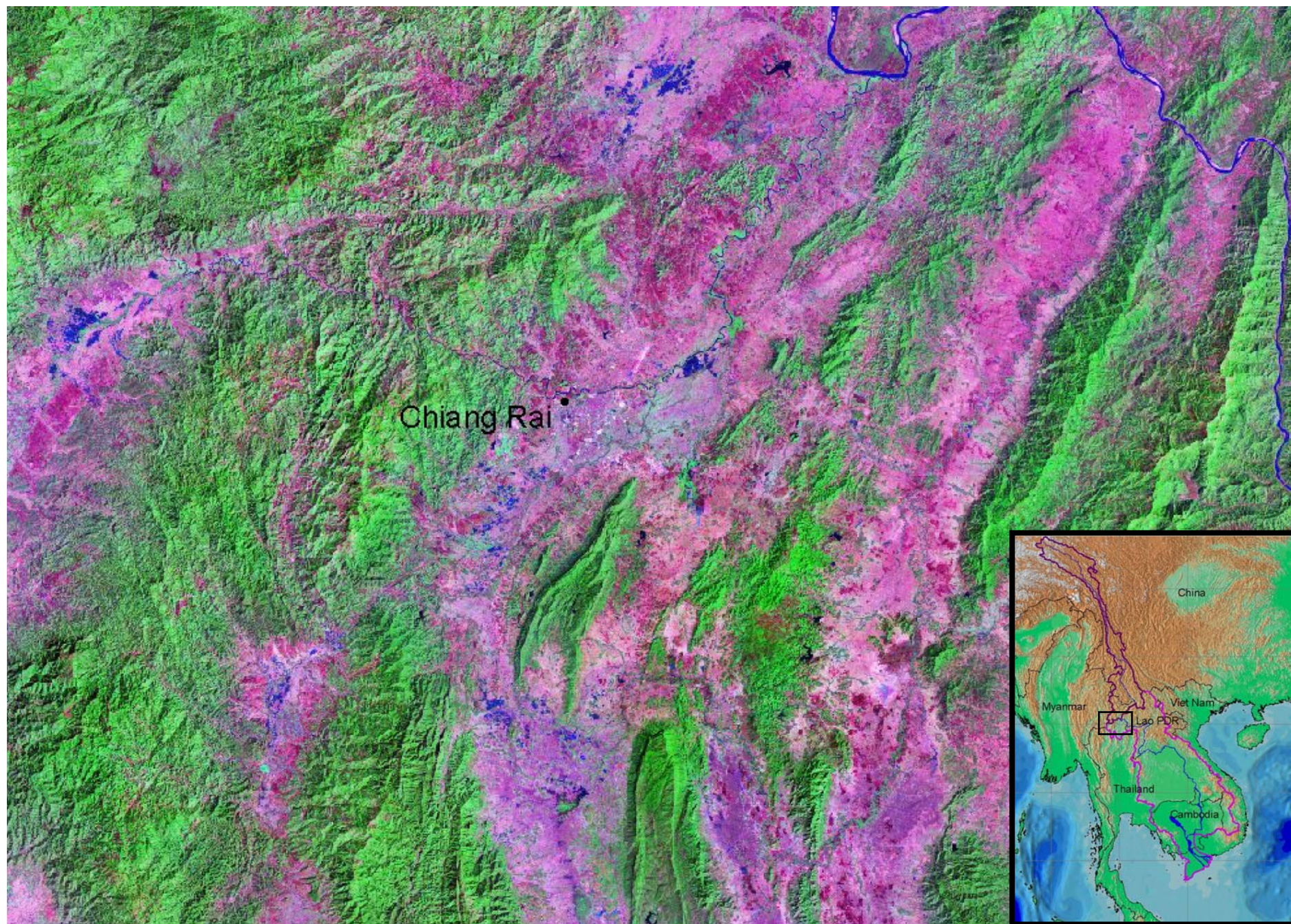


Priority areas for action

- Priority areas within each key result area
- Priority areas for within each sector
- Common themes from all sectors
 - Develop consistent regional strategies for key sectors
 - Improve cross-sectoral planning through coordinated land use planning (community participation)
 - Value-adding through processing, market development and improved access to markets
 - Agreed set of indicators to assess trade-offs between sectors and stakeholders

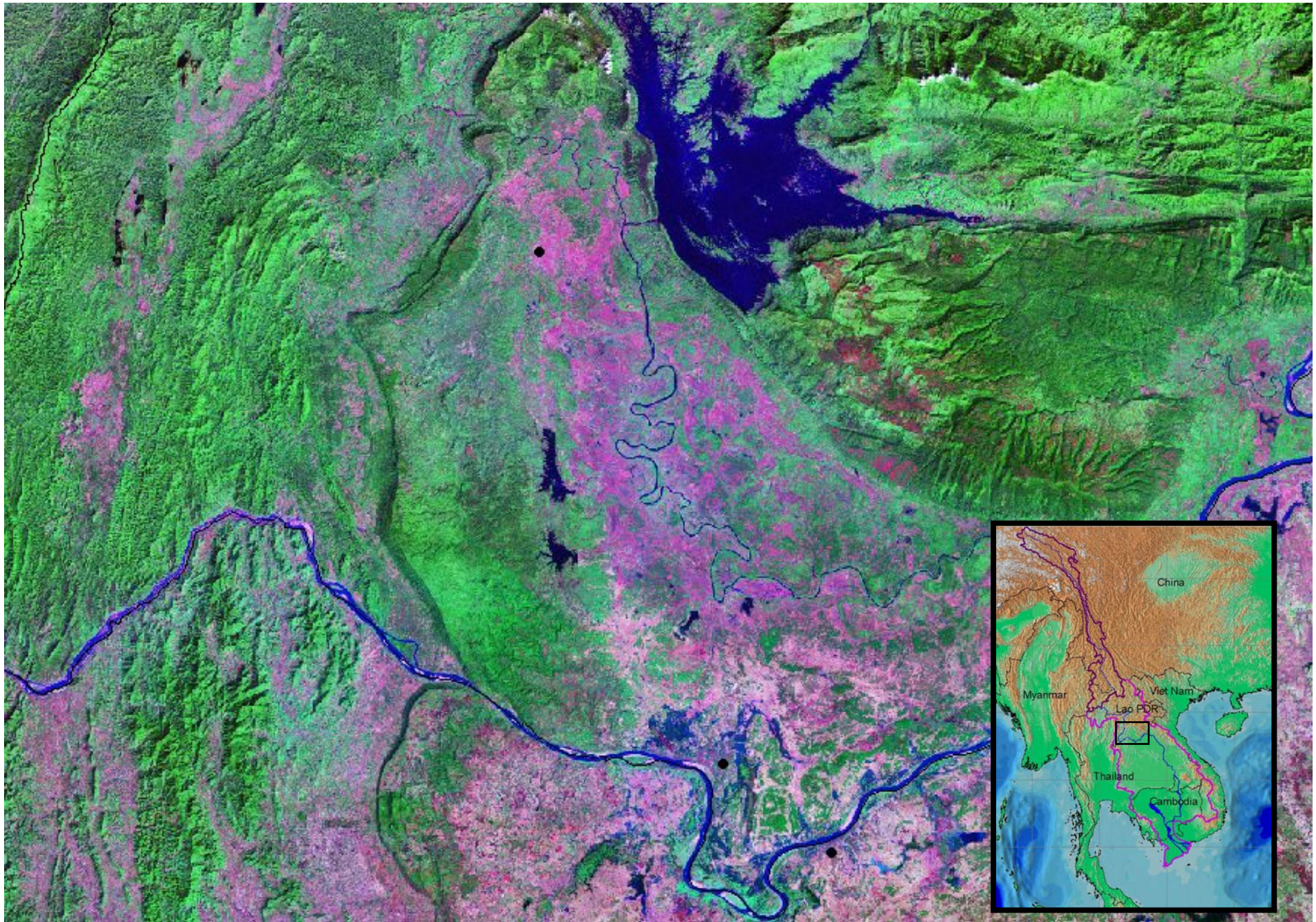
Partnerships for IWRM

- “Implementation ... will rely on a broad coalition of governments at all levels, private sector, communities, UN and other international organizations, research institutions, international financial institutions and donor agencies”.

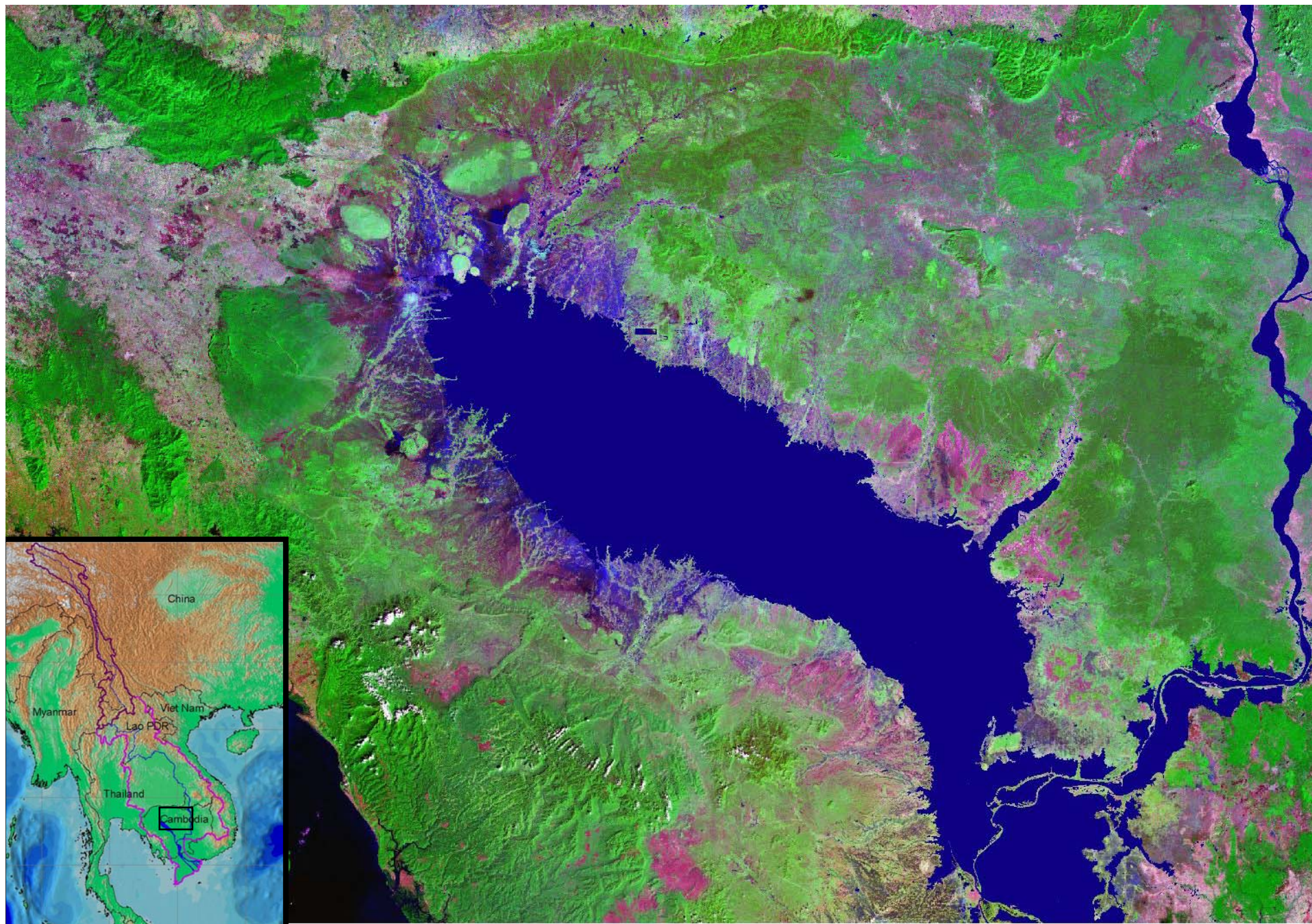


0 10 20 Kilometers

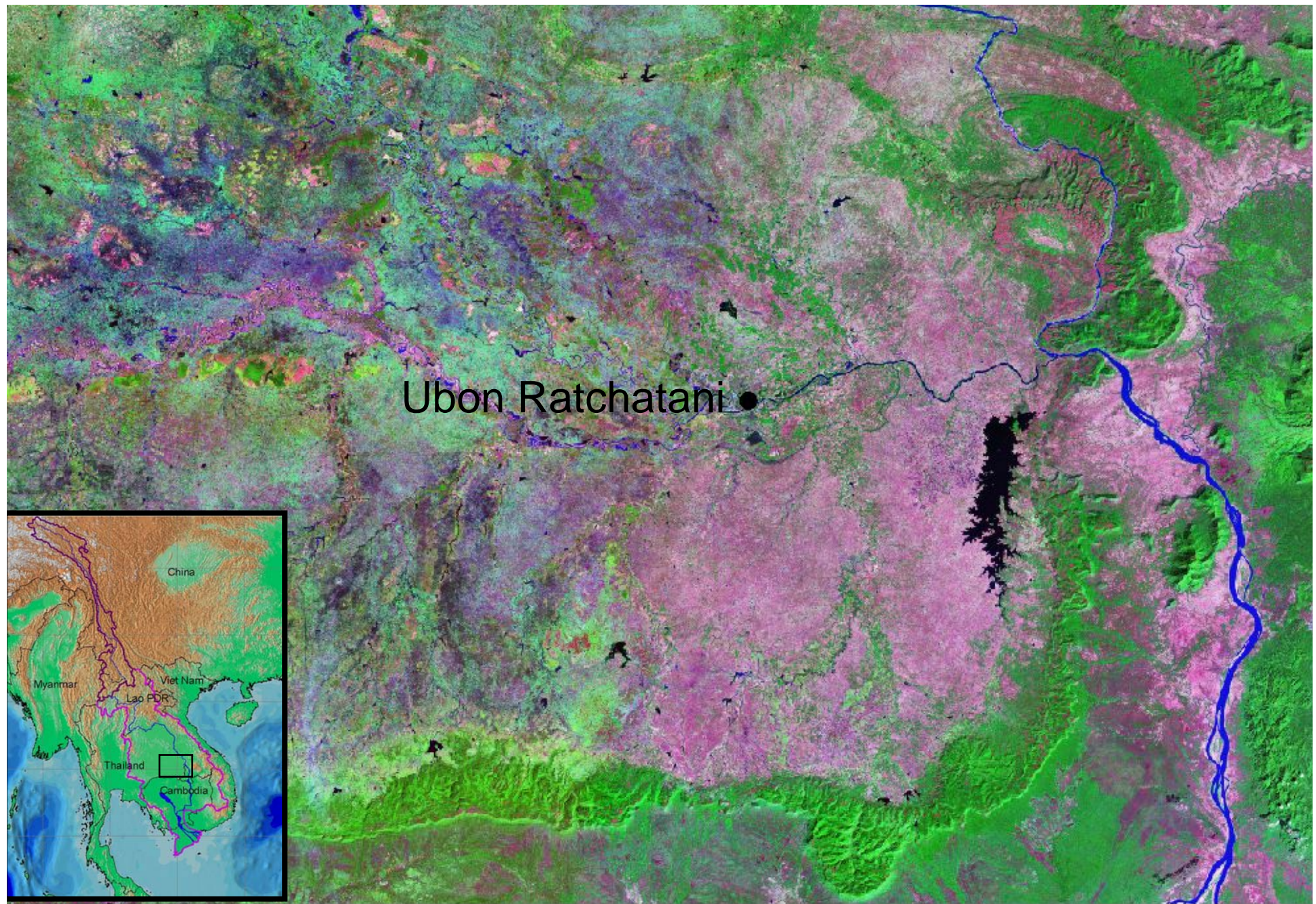
Chiang Rai region



Vientiane plain and Nam Ngum



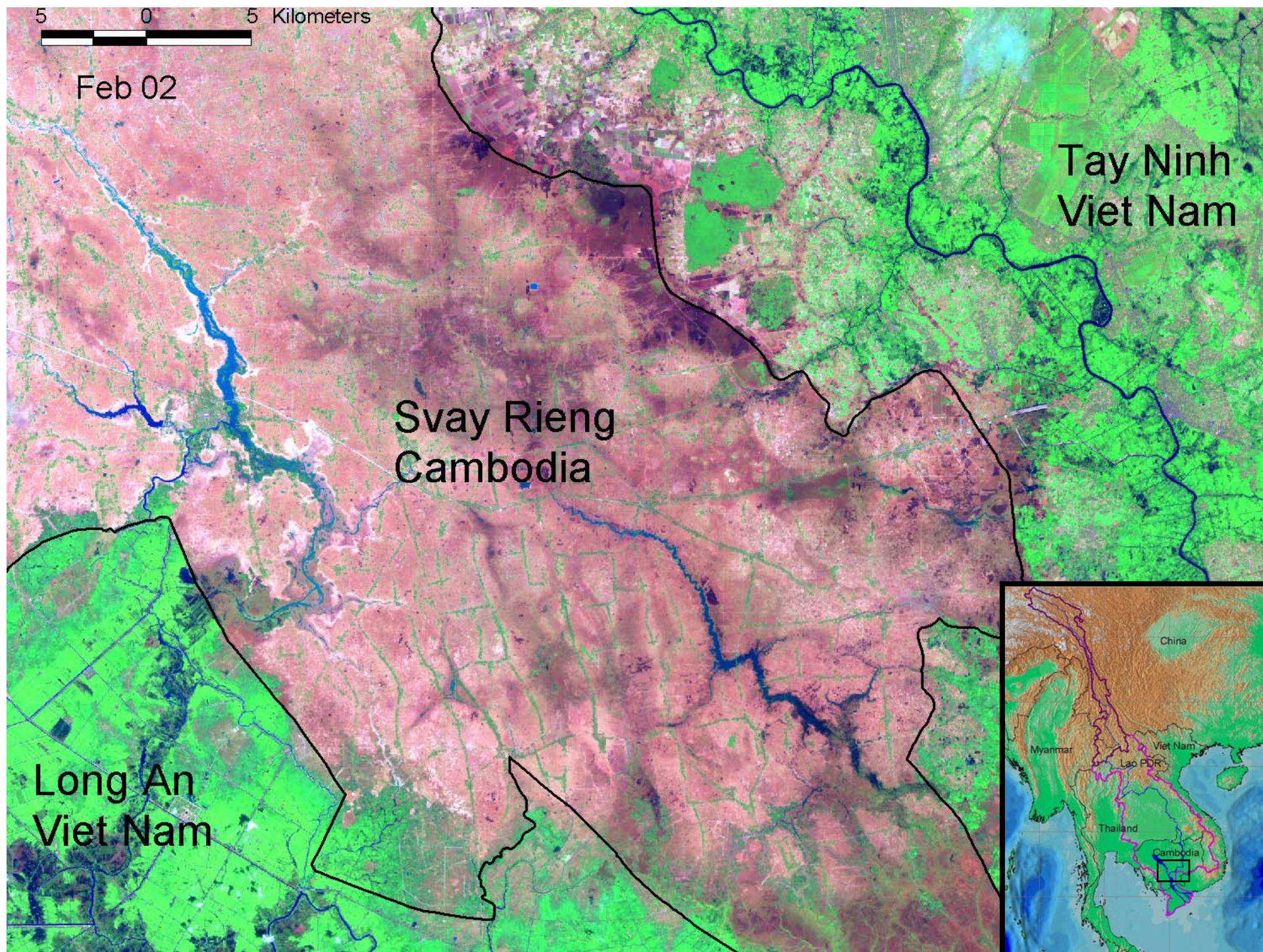
Great Lake - Sept 2000 flood

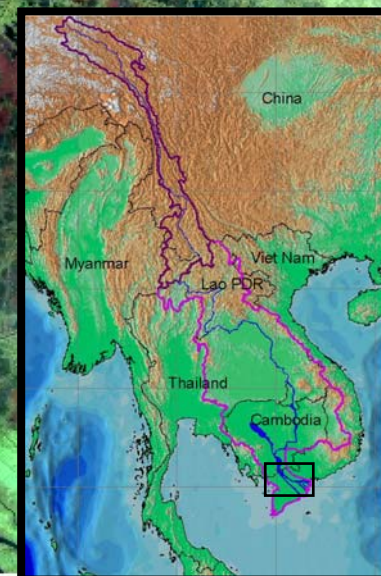
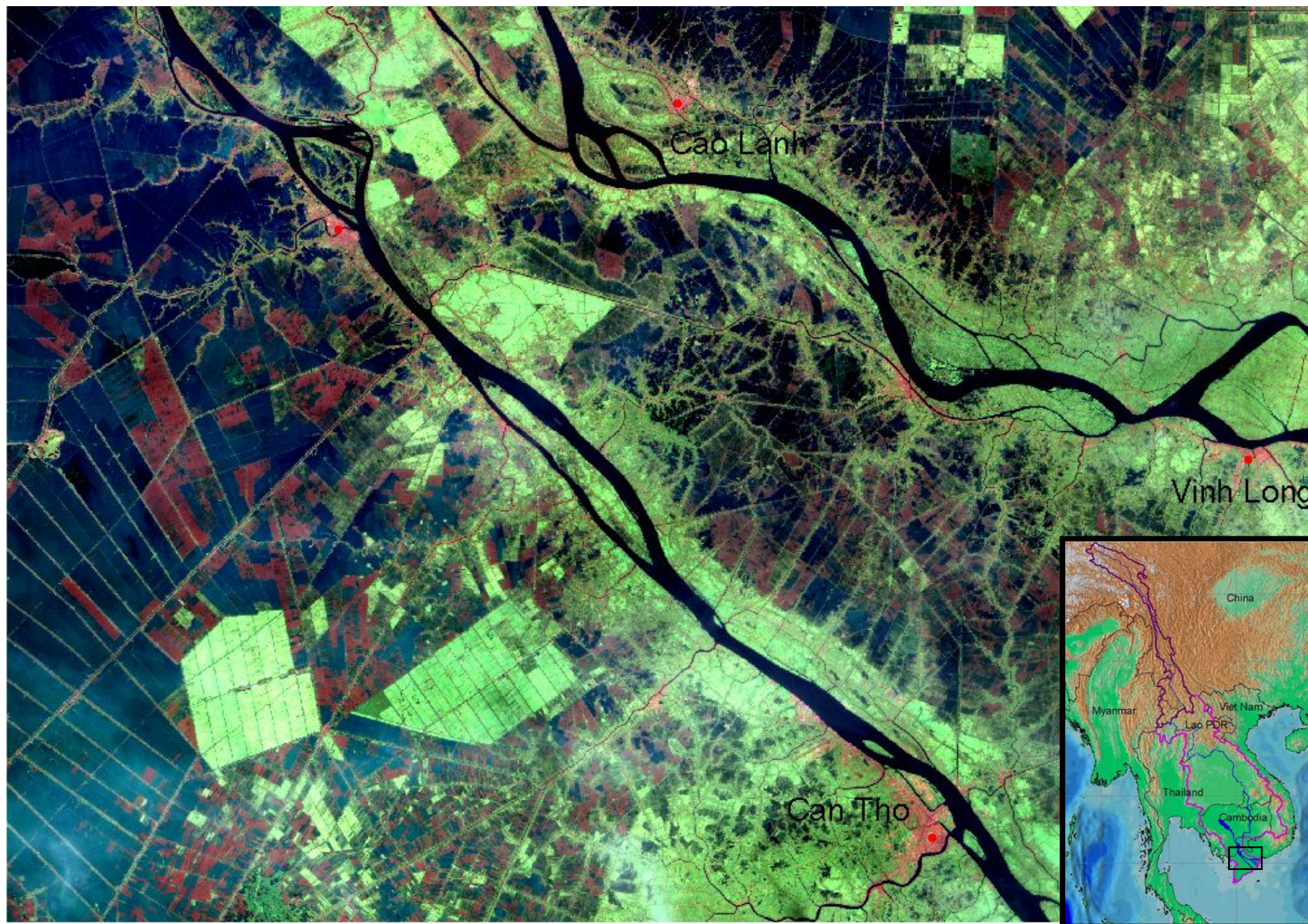


20 0 20 Kilometers

A horizontal scale bar with three segments. The first segment is black and labeled "20". The second segment is white and labeled "0". The third segment is black and labeled "20". The unit "Kilometers" is written to the right of the bar.

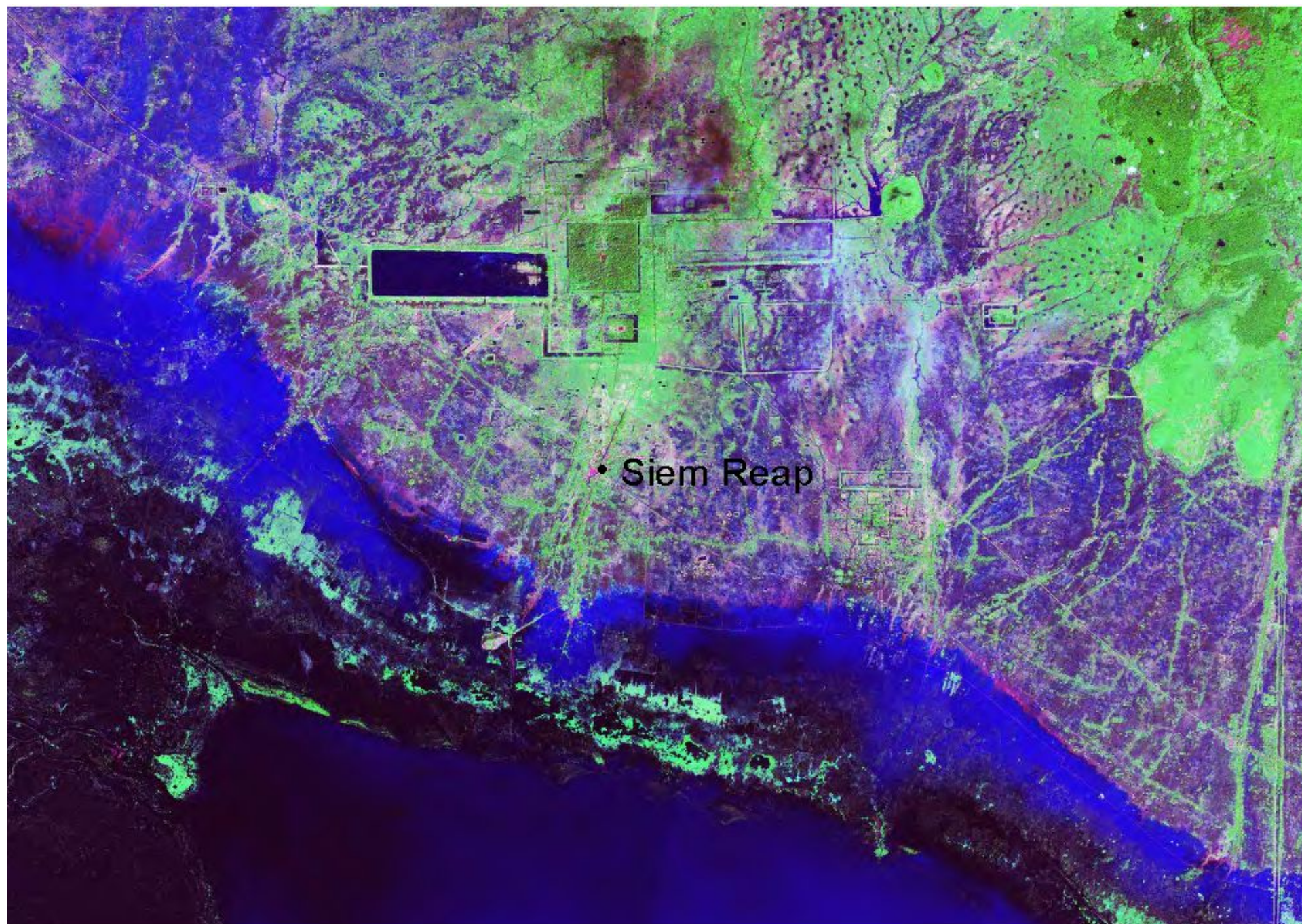
Isan Plateau – Northeast Thailand





5 0 5 10 Kilometers

Can Tho - Mekong Delta



5 0 5 10 Kilometers

Siem Reap - wet season

Scenario analysis example - Tonle Sap

- Hydrological changes to Tonle Sap due to changes on floodplain (road embankments, dykes, clearing) are same order of magnitude as upstream dam development

