



Republic of Serbia
Ministry of Agriculture, Forestry and Water Management
Republic Water Directorate

WFD – SERBIA TOWARDS FULL IMPLEMENTATION

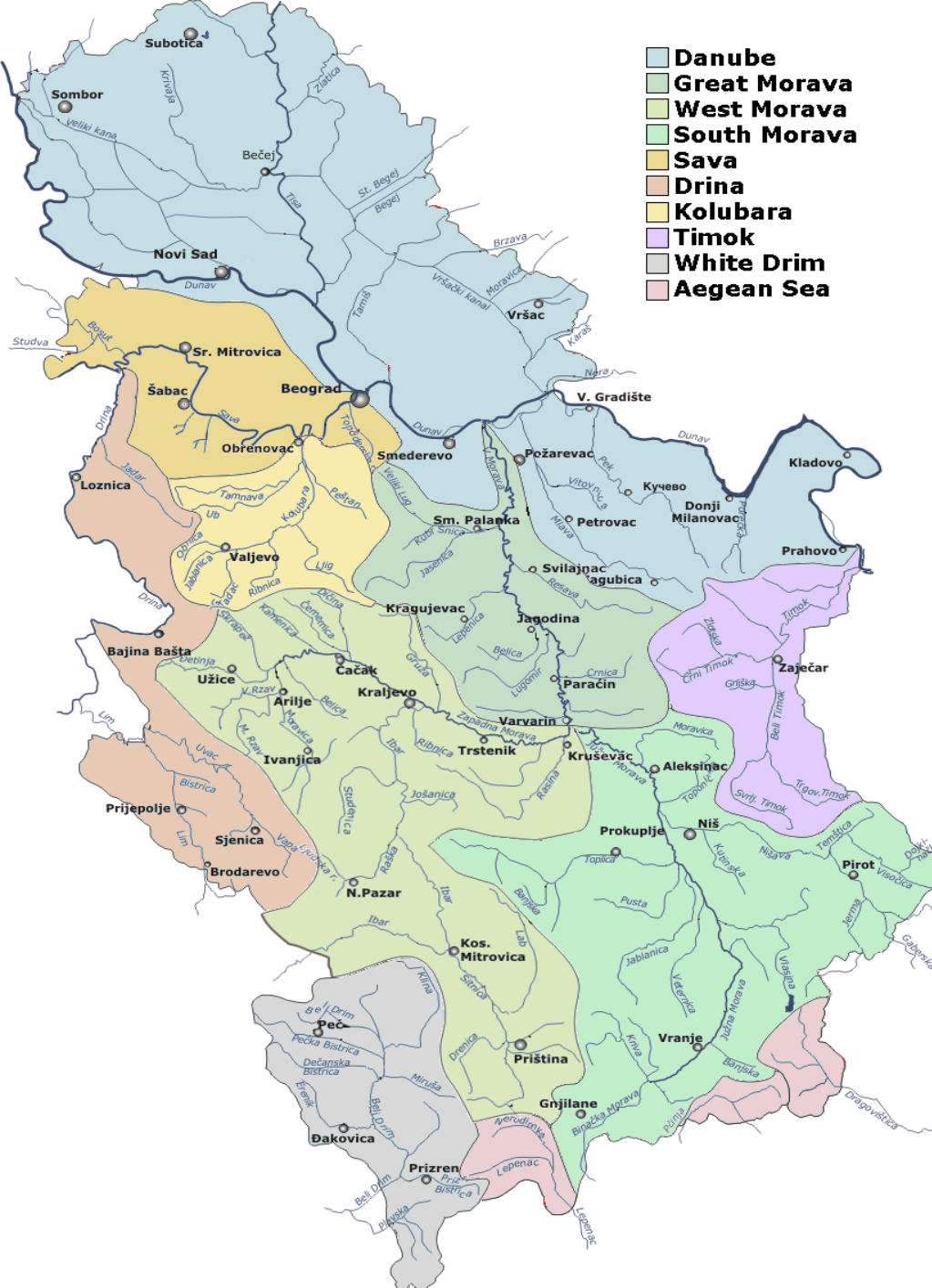
Nataša Milić

acting director

15th "EUROPE-INBO 2017" International Conference
FOR THE IMPLEMENTATION OF THE EUROPEAN WATER DIRECTIVES

Dublin, September 2017

REPUBLIC OF SERBIA



- Surface area: 88.407 km²
- Population: 7.120.666 without Kosovo and Metohija
- Most of the territory belongs to the Danube River Basin
- All major rivers, except the Morava whose entire course lies within Serbia, either cross or define the state border



WATER RESPONSIBILITIES

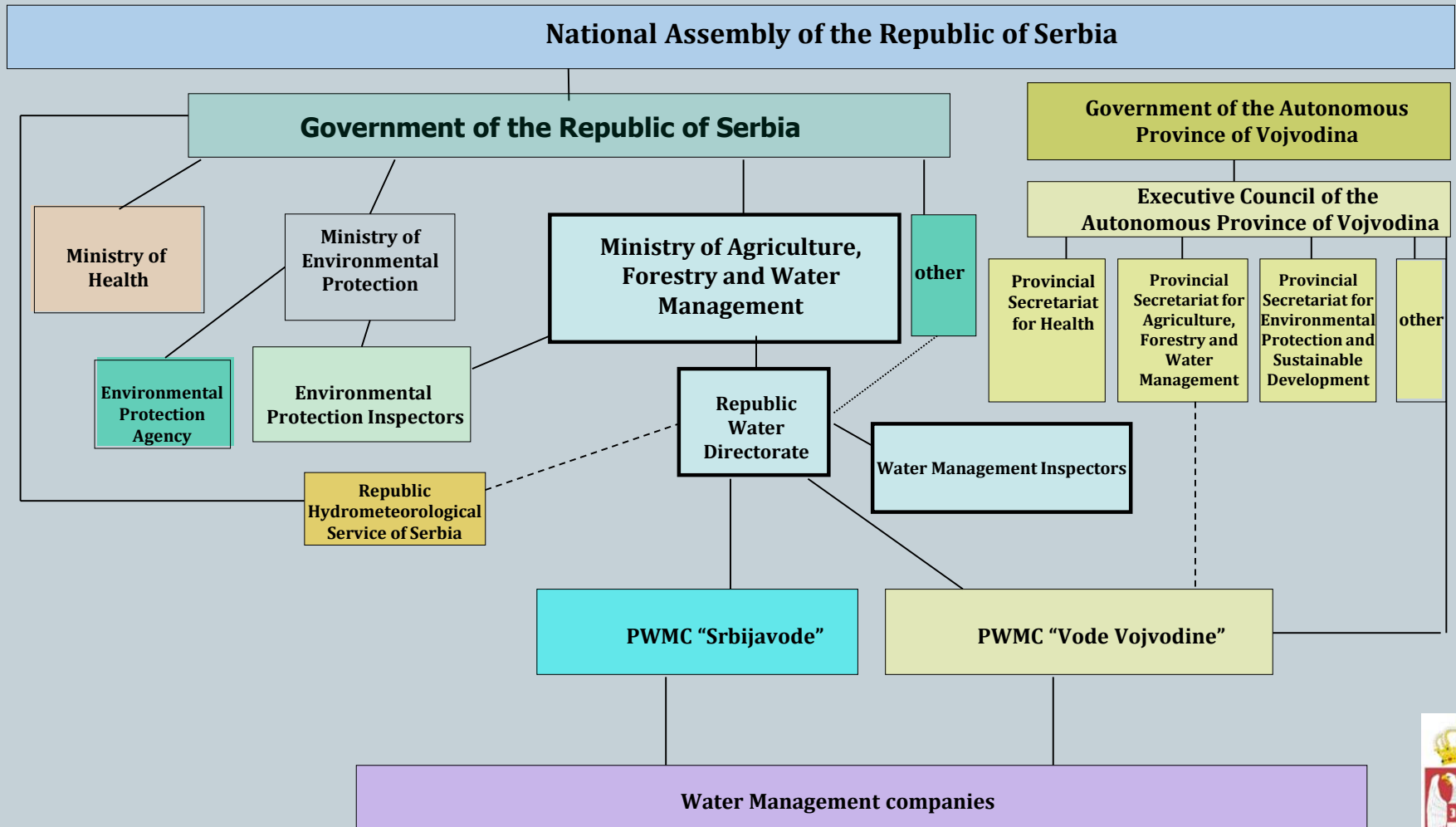


Ministry of Agriculture, Forestry and Water Management, its operational body Republic Water Directorate is responsible:

- for **integrated water resources management** in Serbia, according to the Water Law
- according to the Law on Ministries for:
 - **water resources management policy**
 - **multipurpose water usage**
 - **water regime**
 - **protection from water**
 - **water protection measures maintenance**



INSTITUTIONAL FRAMEWORK



EU ACCESSION PROCESS – CHAPTER 27



- 21 January 2014 in Brussels - the First Intergovernmental Conference - the formal start of Serbia's negotiations to join the EU
- 15-19 September and 17-21 November 2014 in Brussels – SCREENING
- January 2017 - Screening report without benchmarks

- **ON-GOING ACTIVITY – PREPARATION OF NEGOTIATION POSITION**



DEADLINE FOR TRANSPOSITION



EU DIRECTIVE	2015	2016	2017	2018
2000/60/EC – EU WFD	█	█	█	█
2008/105/EC – EU EQS	█	█	█	█
2006/118/EC – EU GW	█	█	█	█
2009/90/EC – EU MON	█	█	█	█
2008/56/EC - EU MS FD	█	█	█	█
2007/60/EC – EU FD	█	█	█	█
98/83/EC – EU DRINKING WATER	█	█		
2006/7/EC – EU BATHING WATER	█	█		
91/676/EEC - EU ND	█	█	█	█
91/271/EEC - EU UWWTD	█	█	█	█



DEADLINE FOR IMPLEMENTATION



ЕУ ЗАКОНОДАВСТВО	BY 2020	2021	2022	2027	2032	2033	2034	2041
2000/60/EC – EU WFD								
2008/105/EC – EU EQS								
2006/118/EC – EU GW								
2009/90/EC – EU MON	2018							
2008/56/EC - EU MS FD								
2007/60/EC – EU FD								
98/83/EC – EU DRINKING WATER								
2006/7/EC – EU BATHING WATER								
91/676/EEC - EU ND								
91/271/EEC - EU UWWTD								



RIVER BASIN MANAGEMENT PLAN



- **International Commission for the Protection of Danube River (ICPDR)**
 - RBMP for the Danube River Basin (adopted on December 10, 2009)
 - Update of RBMP for the Danube River Basin (adopted on December 9, 2015)
 - Integrated RBMP for Tisza River Basin (adopted on April 11, 2011)
- **International Commission for the Sava River Basin (ISRBC)**
 - RBMP for the Sava river Basin (adopted on December 2, 2014)
- **Draft RBMP for the territory of the Republic of Serbia – done in December 2015 – not in accordance with WFD**
- **ON-GOING ACTIVITY – Preparation of RBMP 2021-2027 for the territory of the Republic of Serbia – fully in accordance with WFD**



MAIN ISSUES TO BE ADDRESSED

- ✓ Pollution from untreated urban and industrial waste waters
 - In settlements > 2000 PE - 26 WWTPs, of which 8 works according to designed parameters
 - <8% inhabitants have adequate treatment
- ✓ Pollution from agricultural sources
- ✓ Adequate monitoring programme



CHALLENGES TO BE SOLVED BY 2021



- ✓ Establishment of an adequate water management system and strengthening the capacities of institutions in the water sector
- ✓ Establishment of stable financing, introducing the "user pays" and "polluter pays" principle
- ✓ Transposition of EU water related directives
- ✓ Adoption of planning documents in the field of water management by 2021 (RBMP and FRMP for the territory of the Republic of Serbia)



THANK YOU FOR YOUR ATTENTION



Contact

Nataša Milić
Republic of Serbia
Ministry of Agriculture, Forestry and Water Management
Republic Water Directorate
2a Bulevar Umetnosti
11070 New Belgrade
Tel:(+381 11) 201 33 60
Fax:(+ 381 11) 311 53 70
Email: natasa.milic@minpolj.gov.rs
Website: www.rdvode.gov.rs

