



# How to integrate drought management into the RBMPs

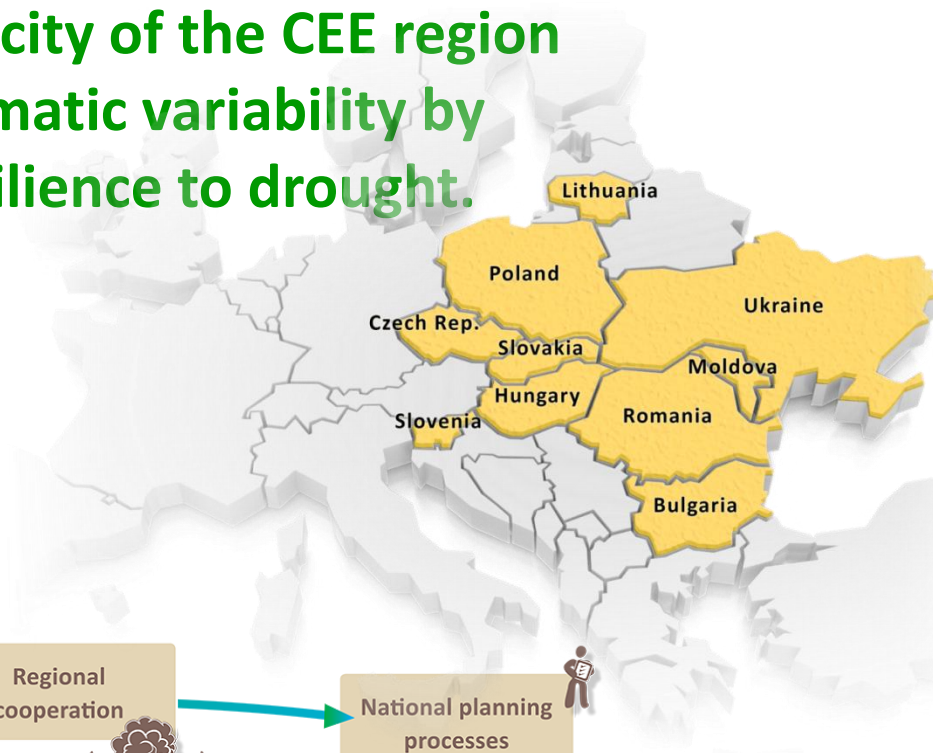
Guidelines for preparation of the Drought Management Plan as part of the RBMP

"EUROPE-INBO 2015"  
22 October 2015 - Thessaloniki – Greece  
*Sabina Bokal, GWP CEE*

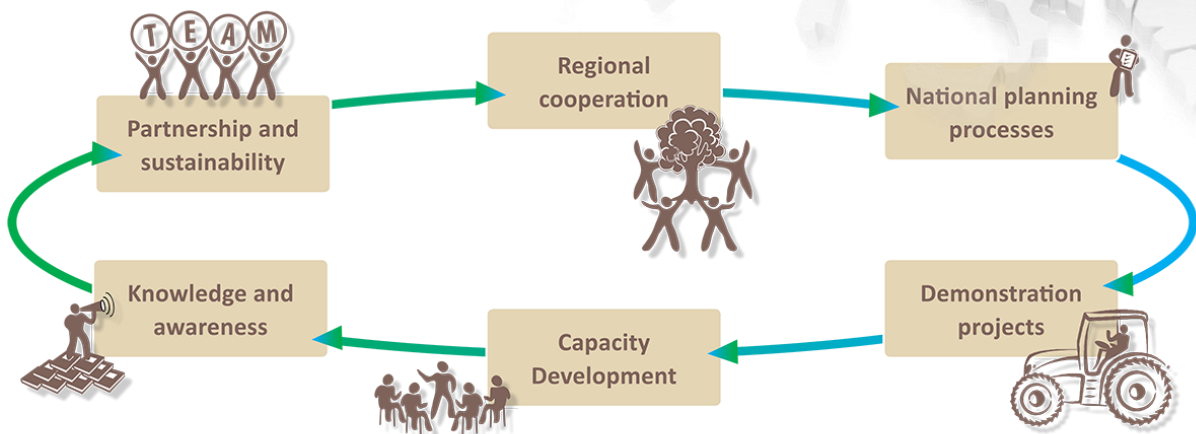
# Integrated Drought Management Programme



**Increase the capacity of the CEE region to adapt to climatic variability by enhancing resilience to drought.**



- ✓ variability and change in precipitation
- ✓ increased frequency of extreme weather events in the future
- ✓ well developed meteorological and hydrological monitoring but not as a support for decision makers
- ✓ limited sharing of information among countries
- ✓ lack of political will to solve the problem – drought was not considered as a relevant issue



# Outputs / processes started

## Testing and describing new approaches towards proactive drought management focusing on agricultural sector as one of the most vulnerable ones in the region

### Natural small water retention measures

- **Guidelines** - Natural Small Water Retention Measures combining drought mitigation, flood protection and biodiversity conservation
- **Video** released during Europe-INBO conference in Bucharest, Romania (November 2014)



- Increasing soil water holding capacity
- Drought impact on forest ecosystems
- Remote sensing agricultural drought monitoring methods
- Updating agricultural drought monitoring and forecasting in Ukraine & Moldova



# Cooperation with national governments

## Main challenges:

Lack of political will to solve the problem  
– drought was not considered as a relevant issue.



## Solutions:

cooperation with national governments to help them to incorporate drought management issues into their national programs, policies and plans

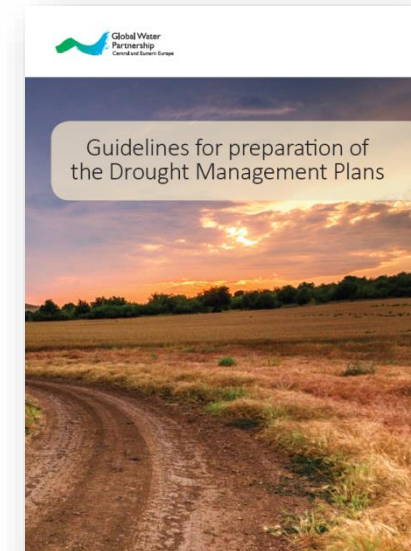
Gaps in the implementation of the EU Water Framework Directive (WFD).



Preparation of the guidance document

**National Consultation Dialogues** (20 in 2 years in 10 countries) –  
*acceptance at the policy level*

**Guidelines for preparation of the Drought Management Plans within RBMP**



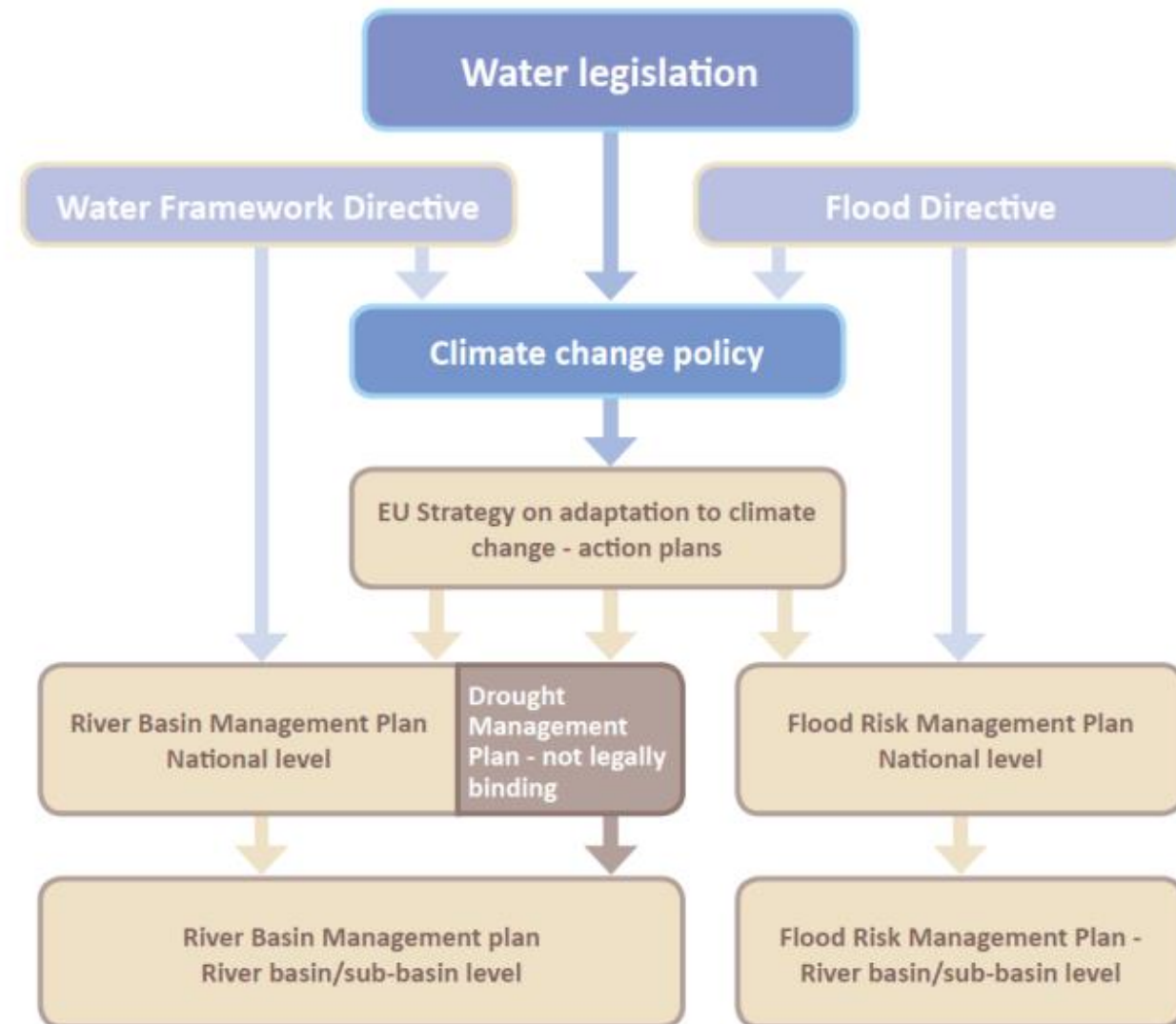
# Process of preparation of the Guidelines

Existing documents,  
guidelines, ...

Policy Framework

## Common Strategy for Implementation of WFD (CIS)

- Drought Management Plan Report Including Agricultural, Drought Indicators and Climate Change (Report 2007)
- Communication from the Commission - Addressing the challenge of water scarcity and droughts in the EU (July 2007)
- Blueprint (November 2012)

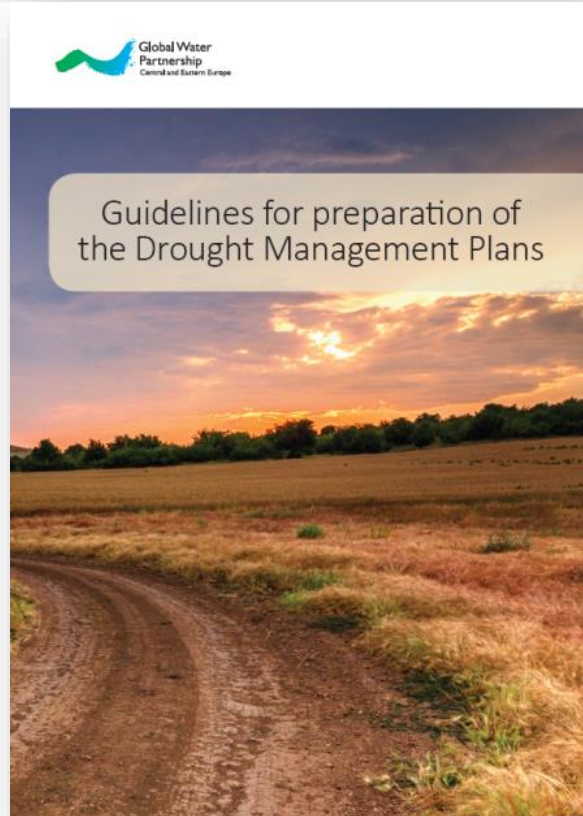


# Process of preparation of the Guidelines

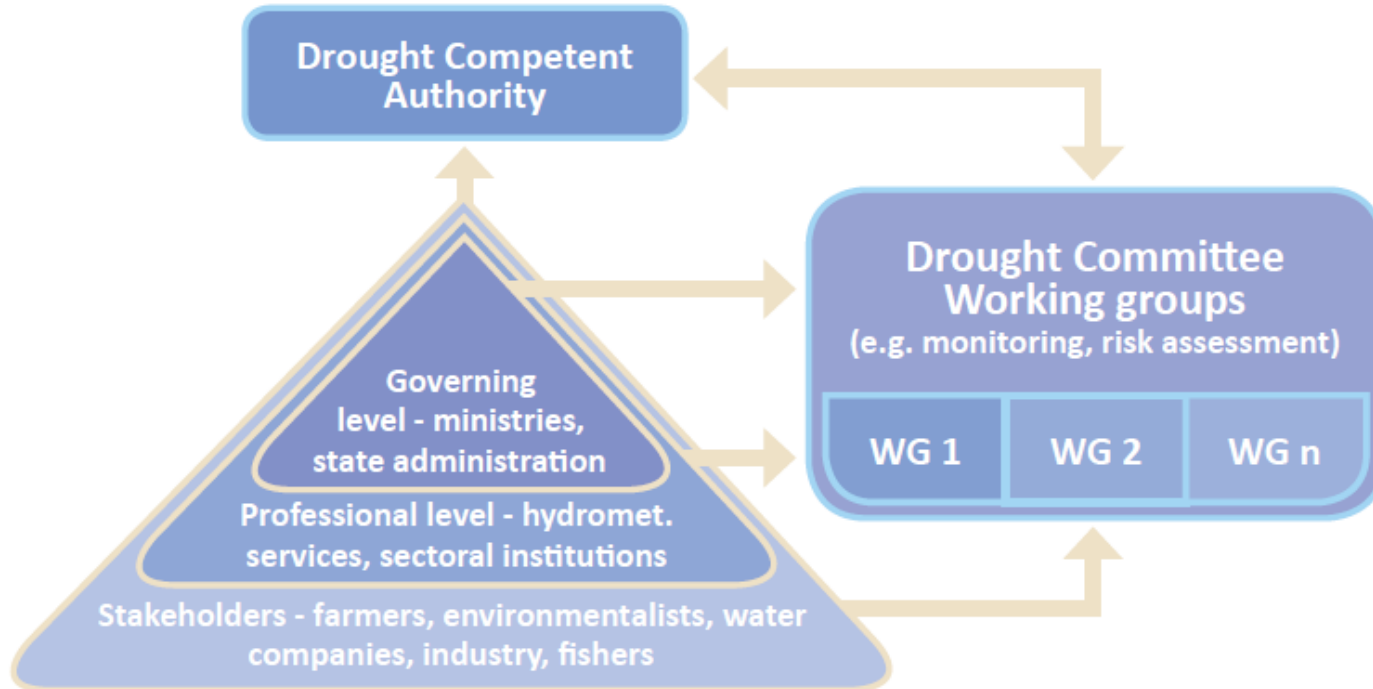


- **key national partners** dealing with drought issues from relevant sectors, effected stakeholders
- **current status**, challenges, problems
- national **experiences**
- to suggest **further steps** in development of the national drought risk-based management strategy and its implementation

# Step-by-step guidance towards Drought Management Plan



## STEP 1 Drought policy development

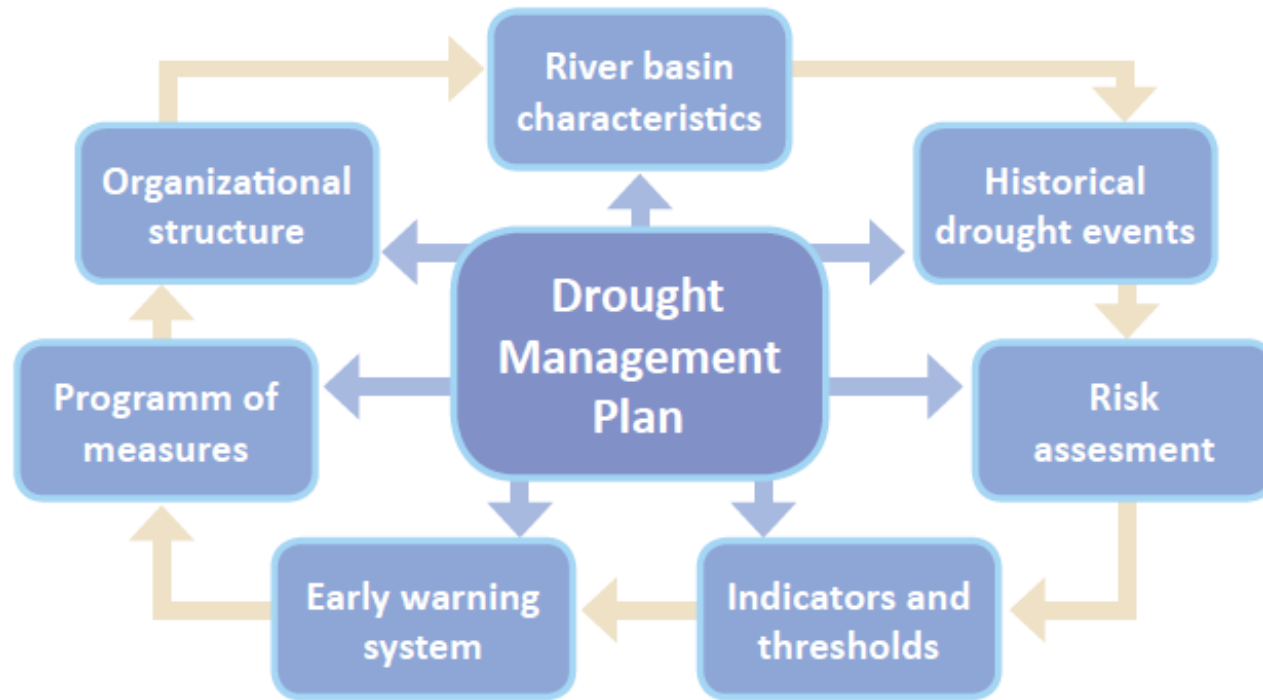


## STEP 2 Objectives of the Drought Management Policy

## STEP 3 Inventory of data for the development of the DMP

- Drought – considered as a relevant issue
  - Competent authority identification
  - Drought Committee establishment
- 
- meteorological data, hydrological data, agricultural data, environmental impacts, socio-economic data, drinking water supply, ...
  - data accessibility
  - open information channel

## STEP 4 Produce/updated DMP



## National experiences and examples

- methodologies for assessment of historical drought
- drought classification, thresholds and early warning systems
- drought indicator systems and evaluation methodologies
- program of measures for preventing and mitigating drought

## STEP 5 Public participation

## STEP 6 Research and science programme

## STEP 7 Develop and educational programme



# Thank you for your attention

[www.gwp.org/GWP-CEE/IDMPCEE/](http://www.gwp.org/GWP-CEE/IDMPCEE/)