

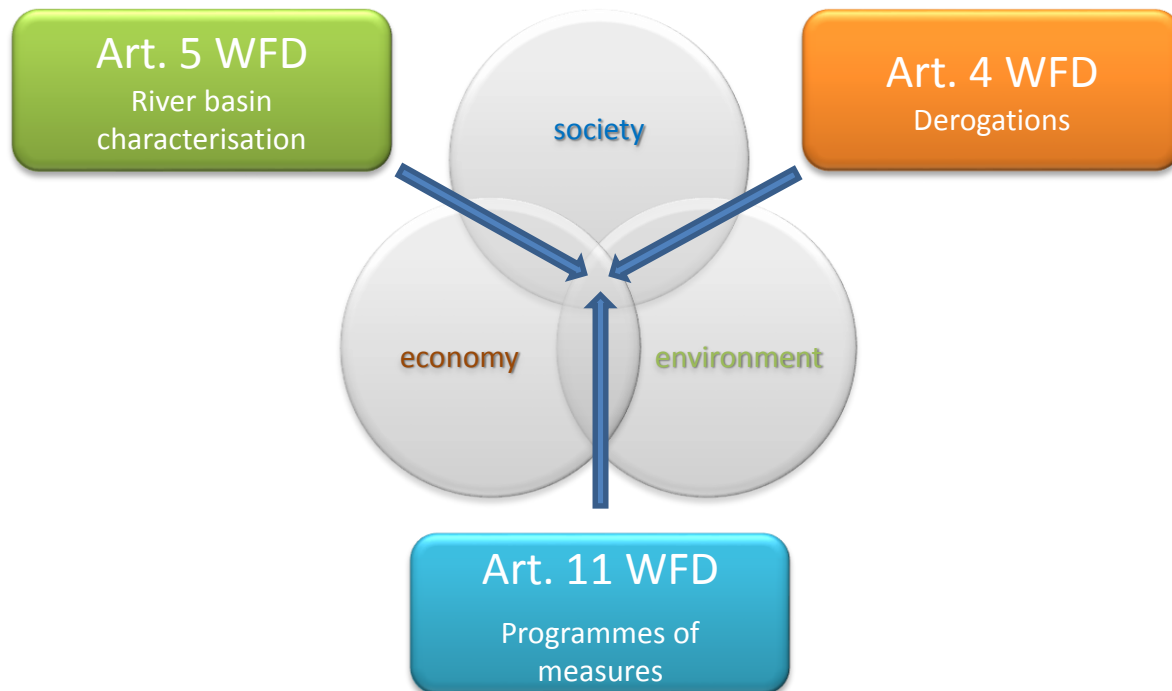
Diffuse pollution in river basin management

Przemysław Gruszecki

National Water Management Authority
Department of Planning and Water Resources

There are diverse conditions and needs in the Community which require different specific solutions. This diversity should be taken into account in the planning and execution of measures to ensure protection and sustainable use of water in the framework of the river basin.

WFD Preamble (13)



Further integration of protection and sustainable management of water into other Community policy areas such as energy, transport, agriculture, fisheries, regional policy and tourism is necessary. This Directive should provide a basis for a continued dialogue and for the development of strategies towards a further integration of policy areas.

WFD Preamble (16)

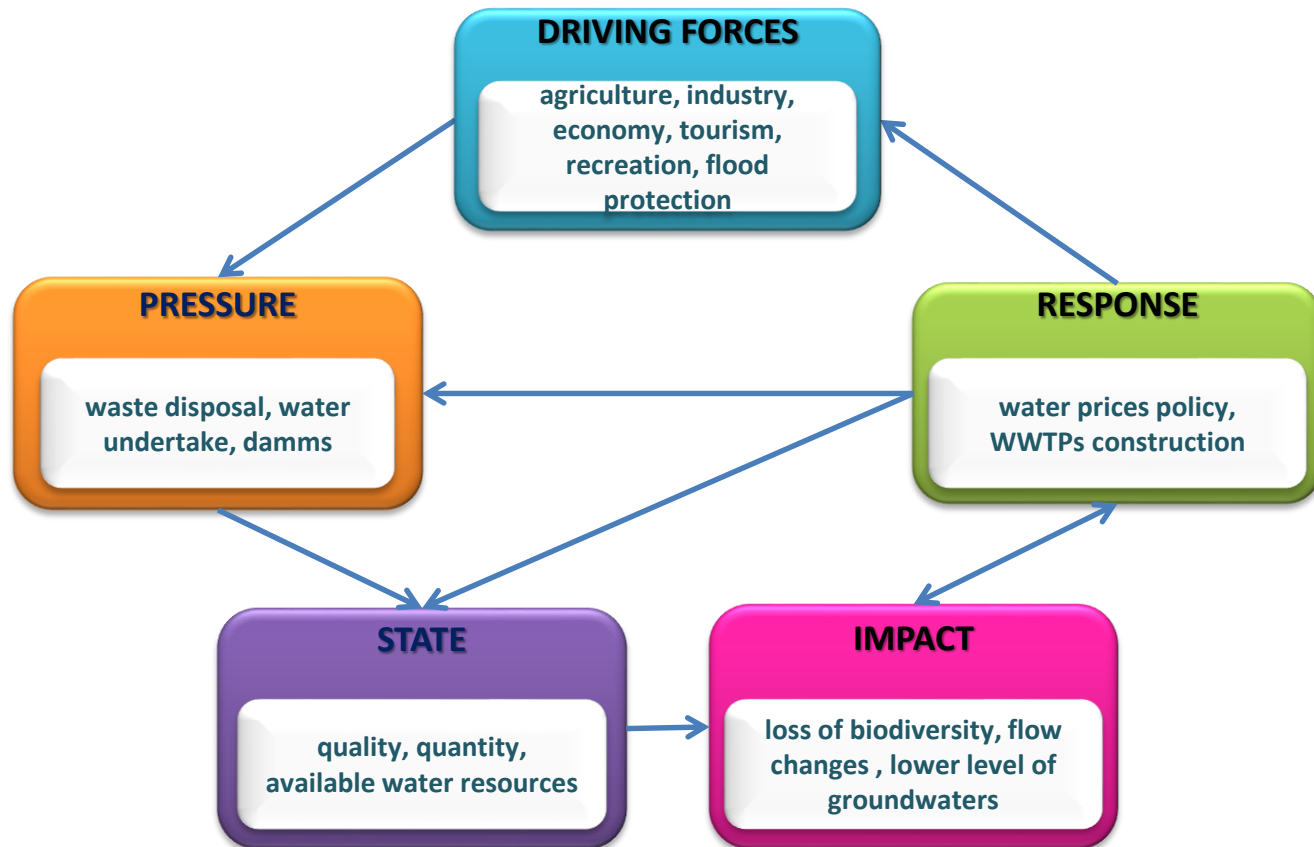




KZGW

Krajowy Zarząd
Gospodarki Wodnej

INTEGRATION OF INFORMATION



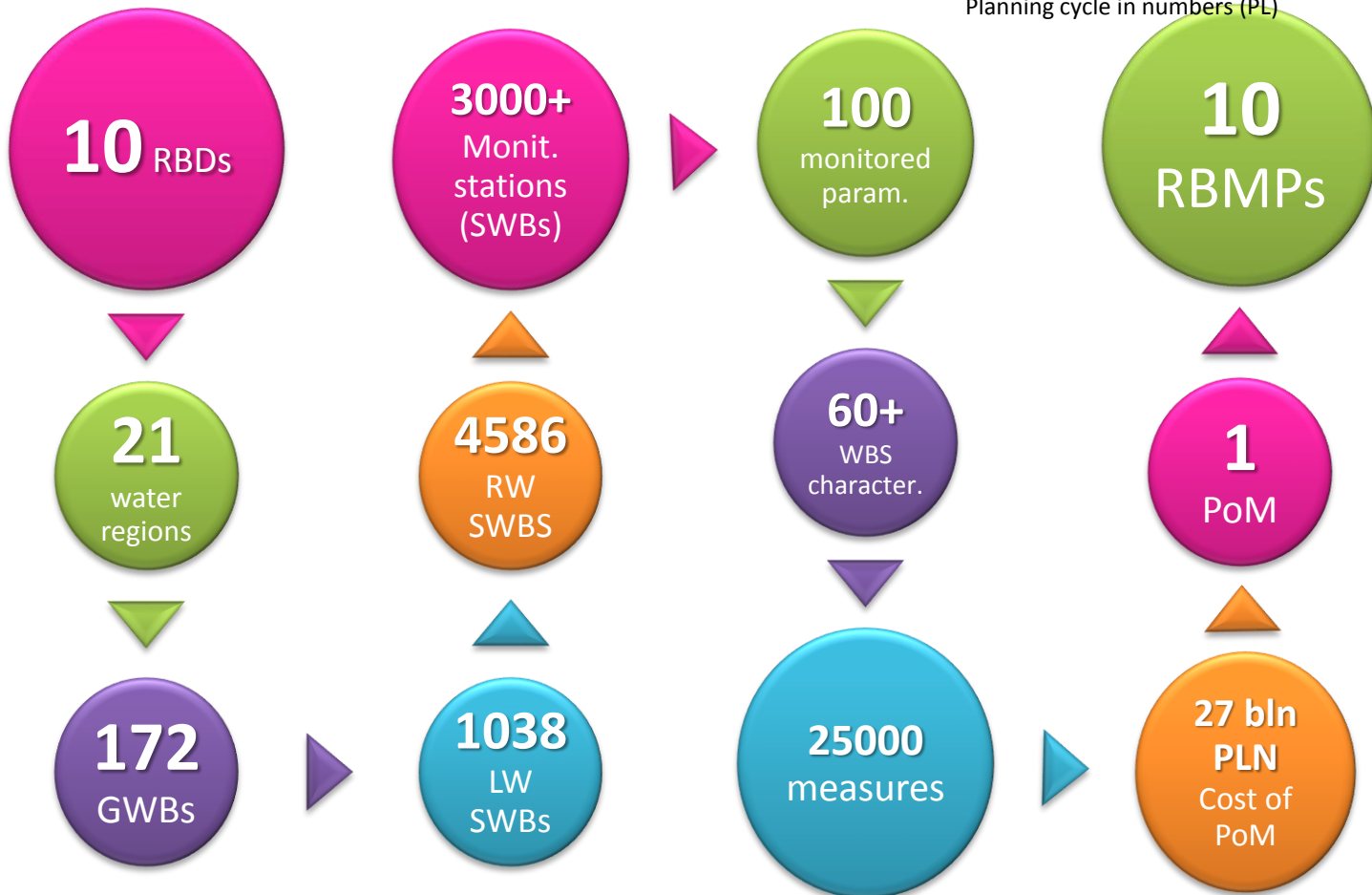


KZGW

Krajowy Zarząd
Gospodarki Wodnej

INFORMATION INTEGRATION

Planning cycle in numbers (PL)



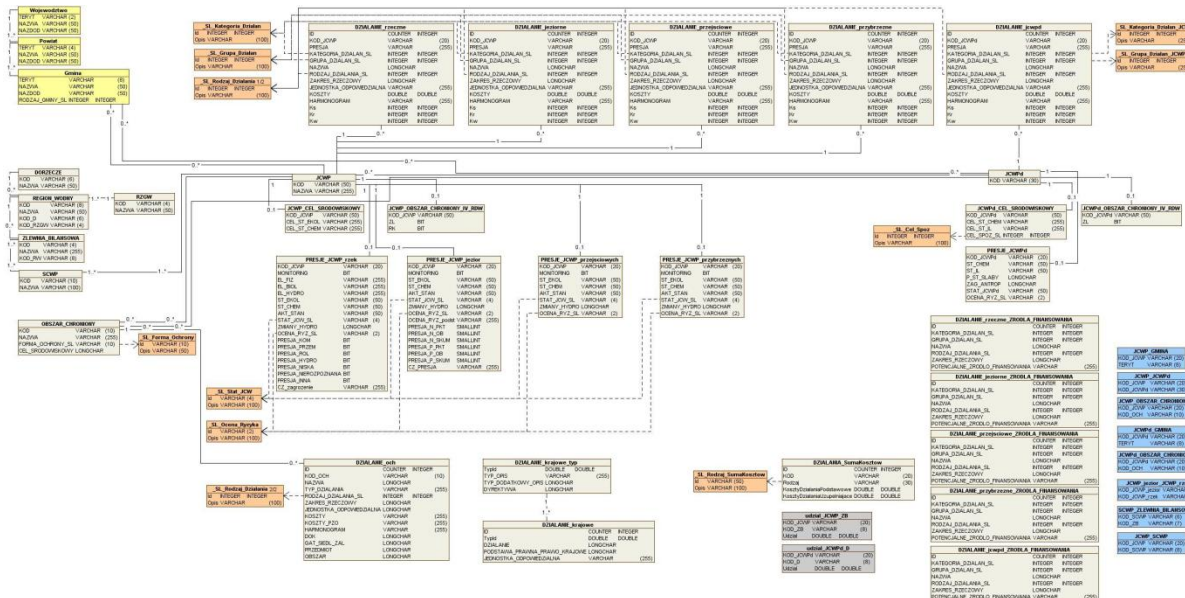


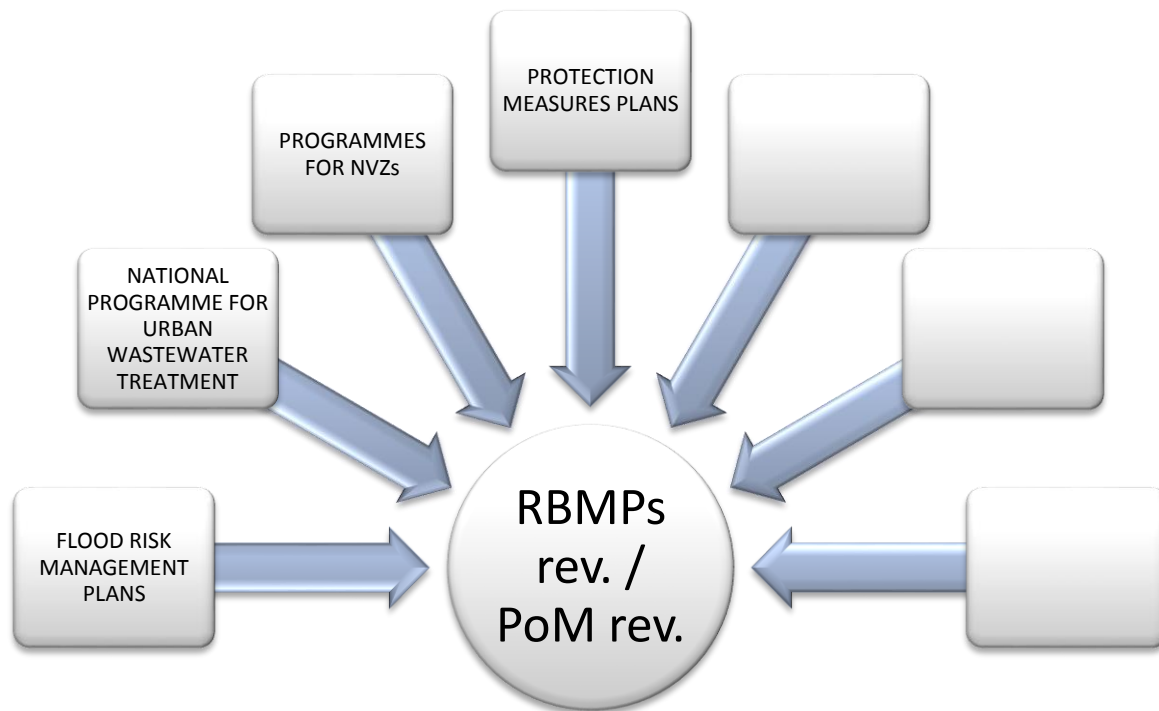
Programme of Measures

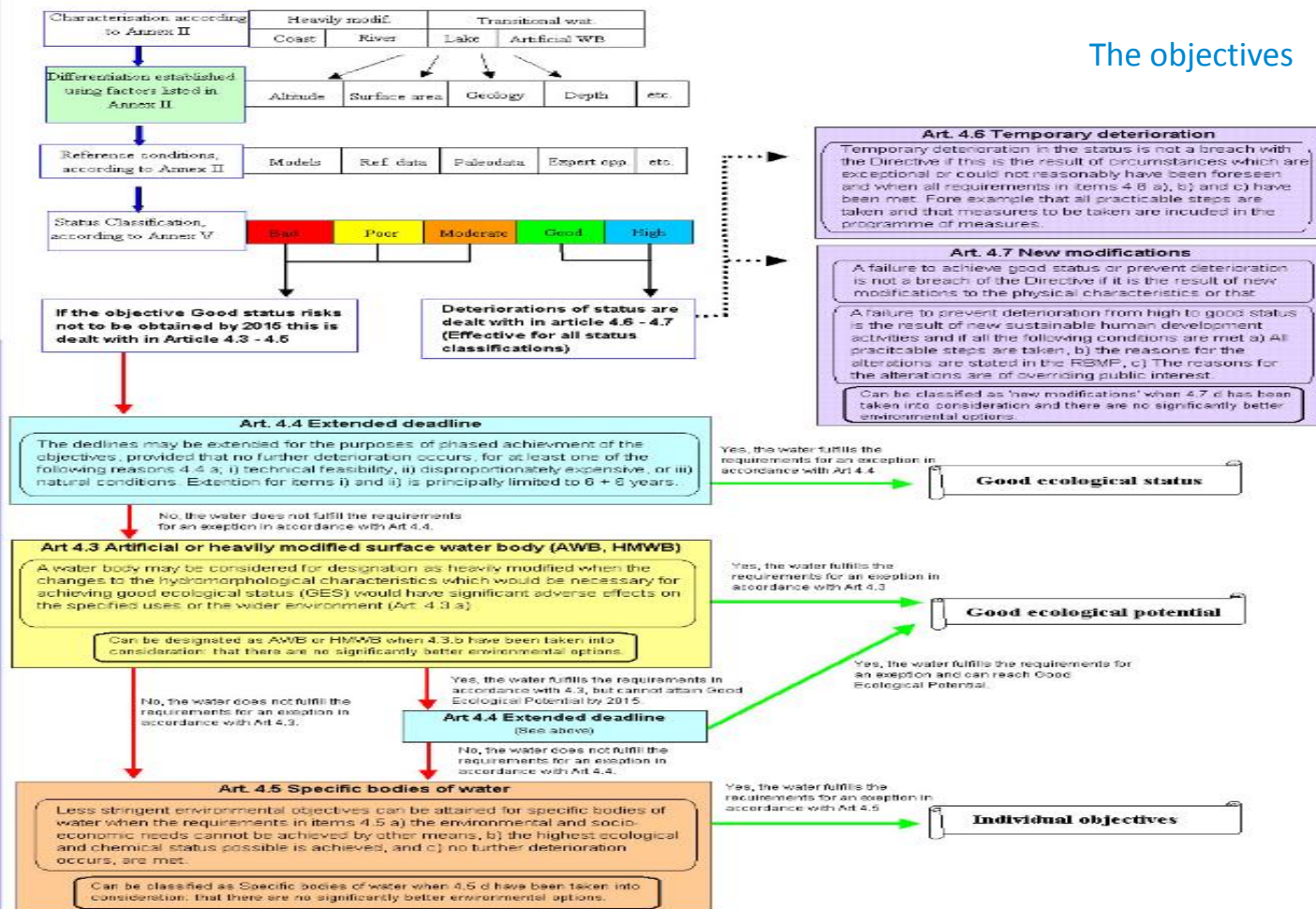
MEASURES



Data base MS Access

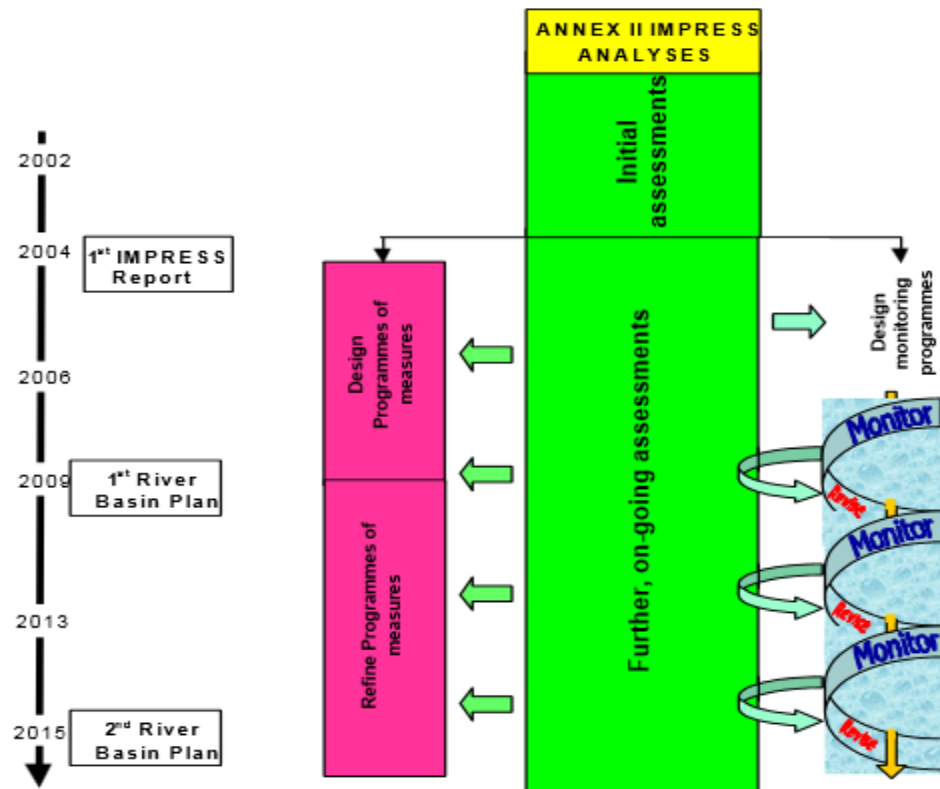






Pressures and impacts analyses have a central role in the river basin management planning process. Their principal aim is to identify where and to what extent human activities may be placing the achievement of the Directive's environmental objectives at risk.

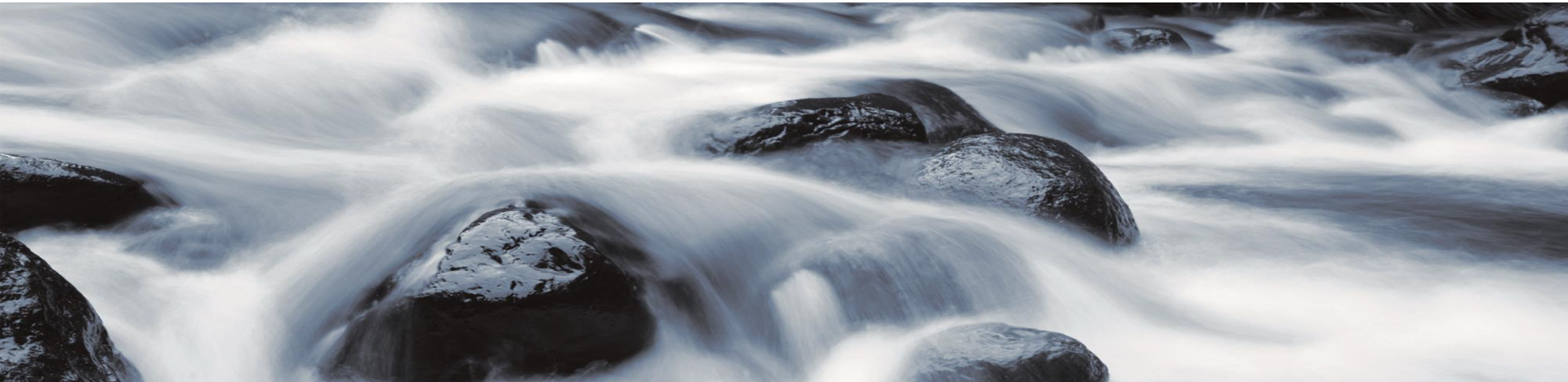
Source: WFD CIS IMPRESS Guidance





KZGW

Krajowy Zarząd
Gospodarki Wodnej



THANK YOU!