



Natural Resources Conservation and Livelihoods in the Tonle Sap Basin

Objectives

- Interactions between natural resources management and livelihoods;
- Natural resources conservation and management; and
- Involvement of national institution.

Overview of the TSB

- The Tonle Sap is the most important inland aquatic environment in Southeast Asia.
- It covers an area of approximately 80,000 km² (in Cambodia).
- Eight provinces and one city share the Basin.
- 12 main tributaries connect to the Great Lake.
- Different flow between wet and dry season.

Overview of the TSB

- About 60% of water originates from the Mekong and approximately 40% comes from its own catchment and tributaries.
- The lake supports millions population through its enormous fisheries productivity and provides the last refuge for some of Asia's most globally significant biodiversity.

Livelihoods



Rice Cultivation

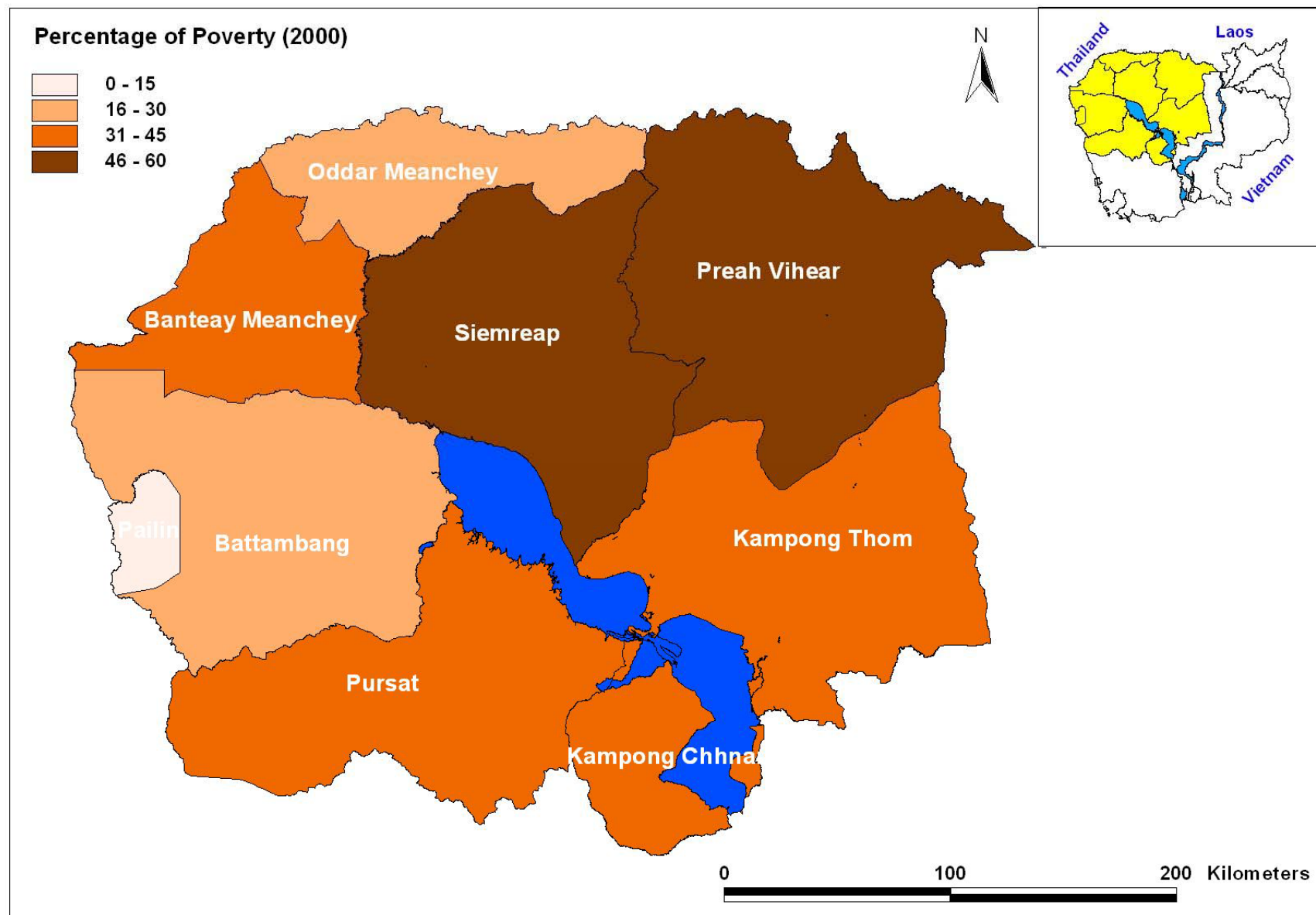


Tourism

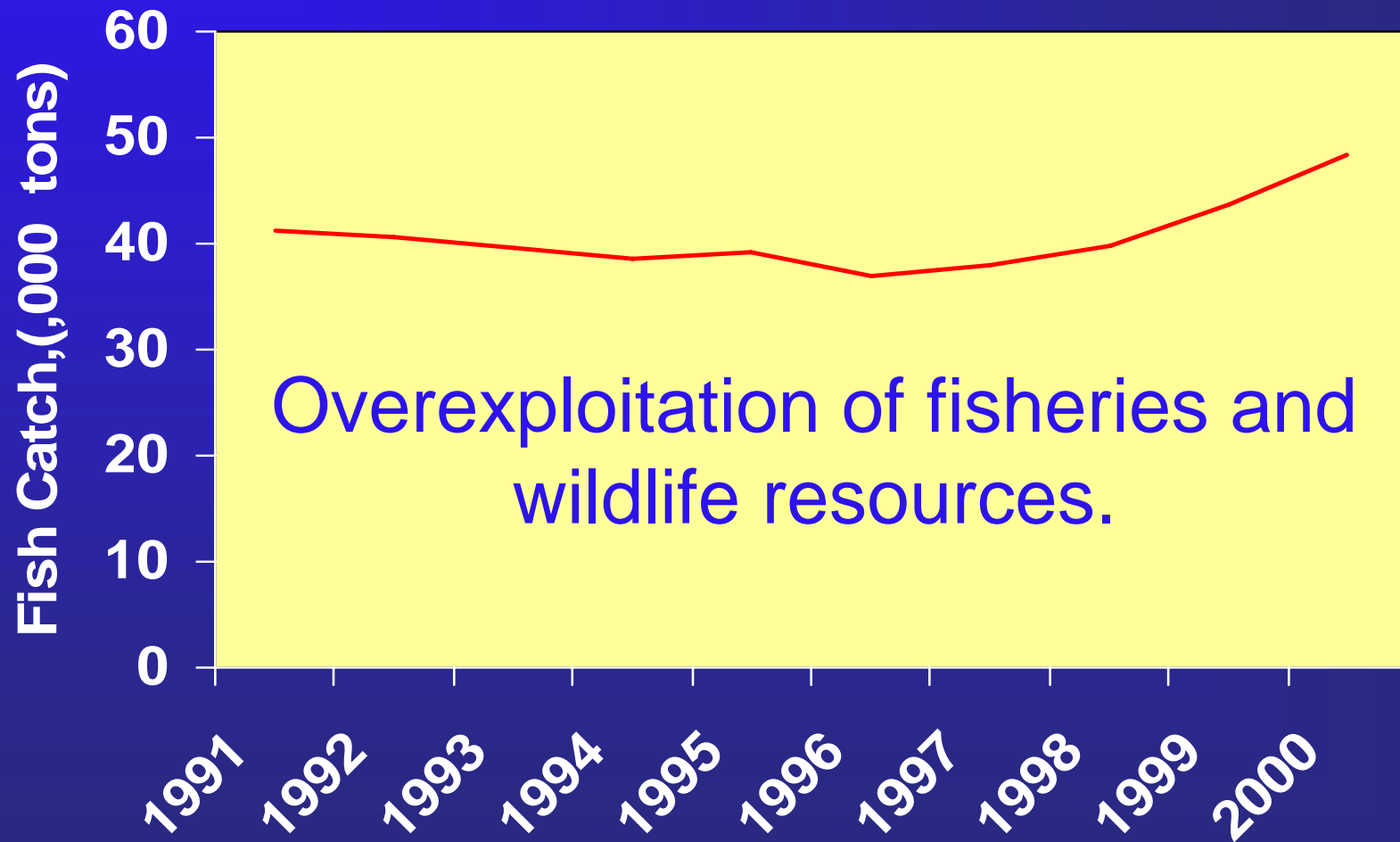


Fishing and Hunting

Poverty

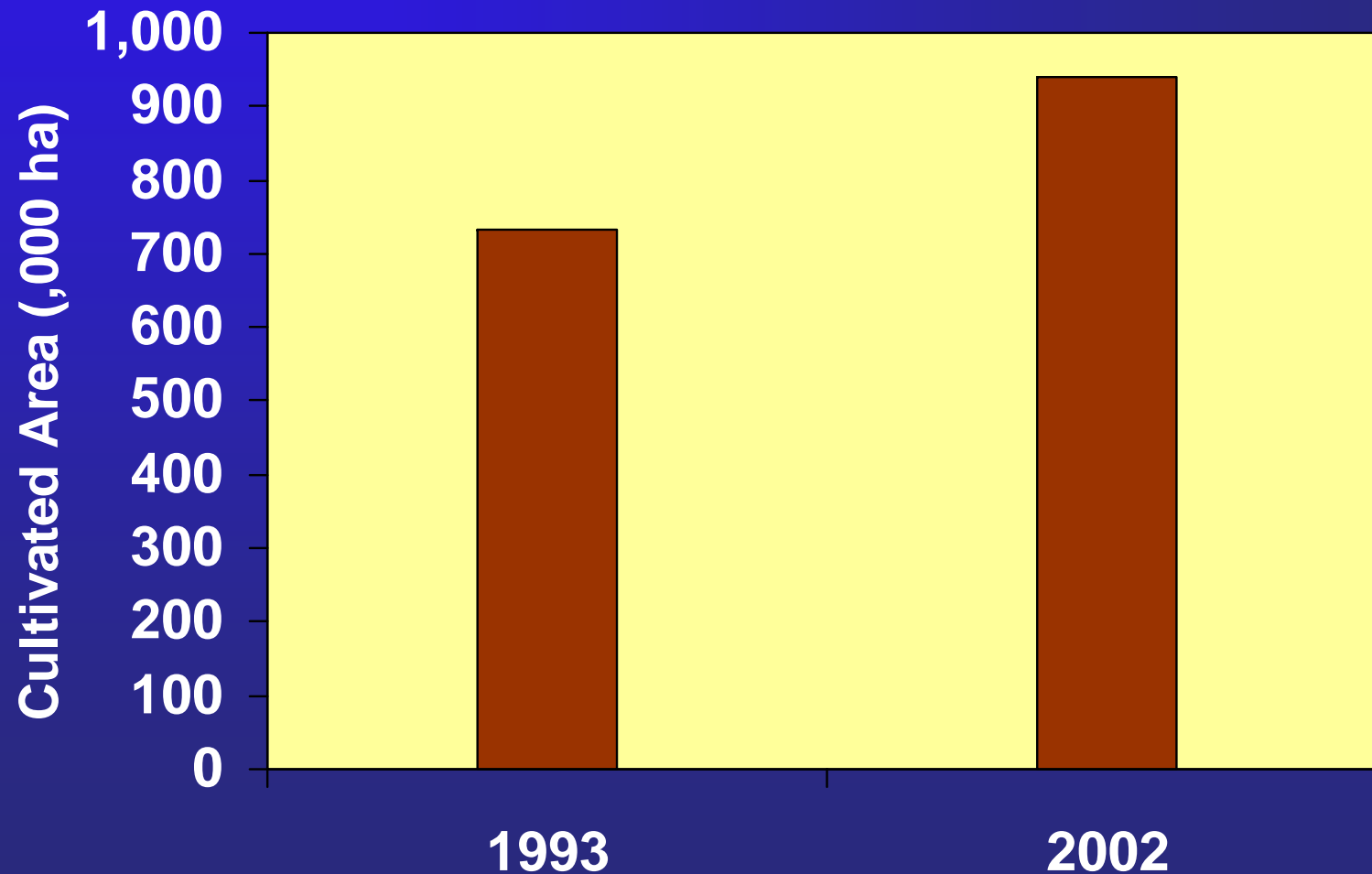


The Major Threats to TSB

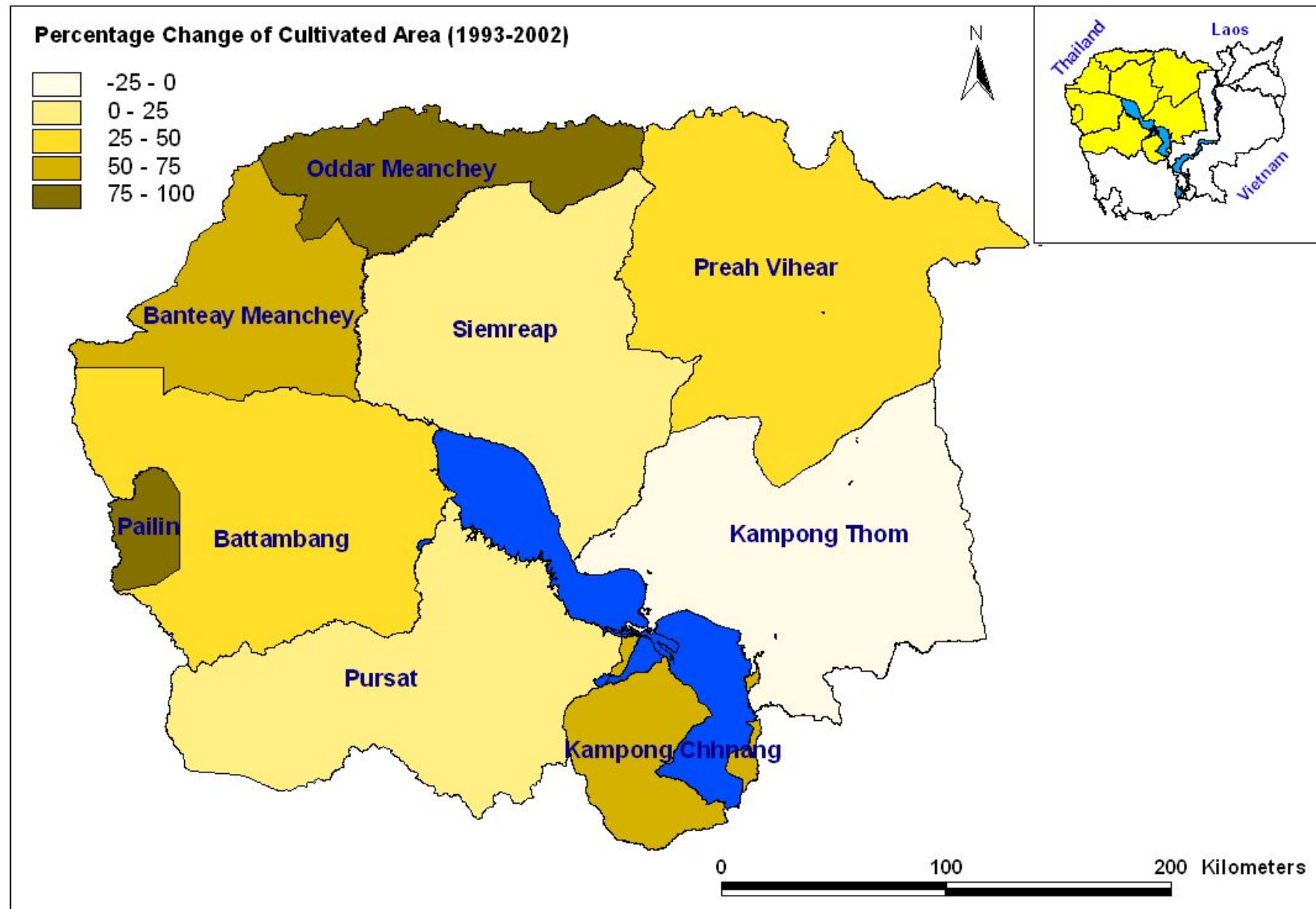


The Major Threats to TSB

Conversion of the flooded forest to agriculture



The Major Threats to TSB



The Major Threats to TSB



Pictured by MRCS

Collection of fuel wood from the flooded forest.

The Major Threats to TSB



Decrease of water flow in the wet season.



Institutional Framework

- National institutions; and
- International organizations.

Conclusion

Widespread Deforestation

Habitat Encroachment

Biodiversity Loss

Ecotourism

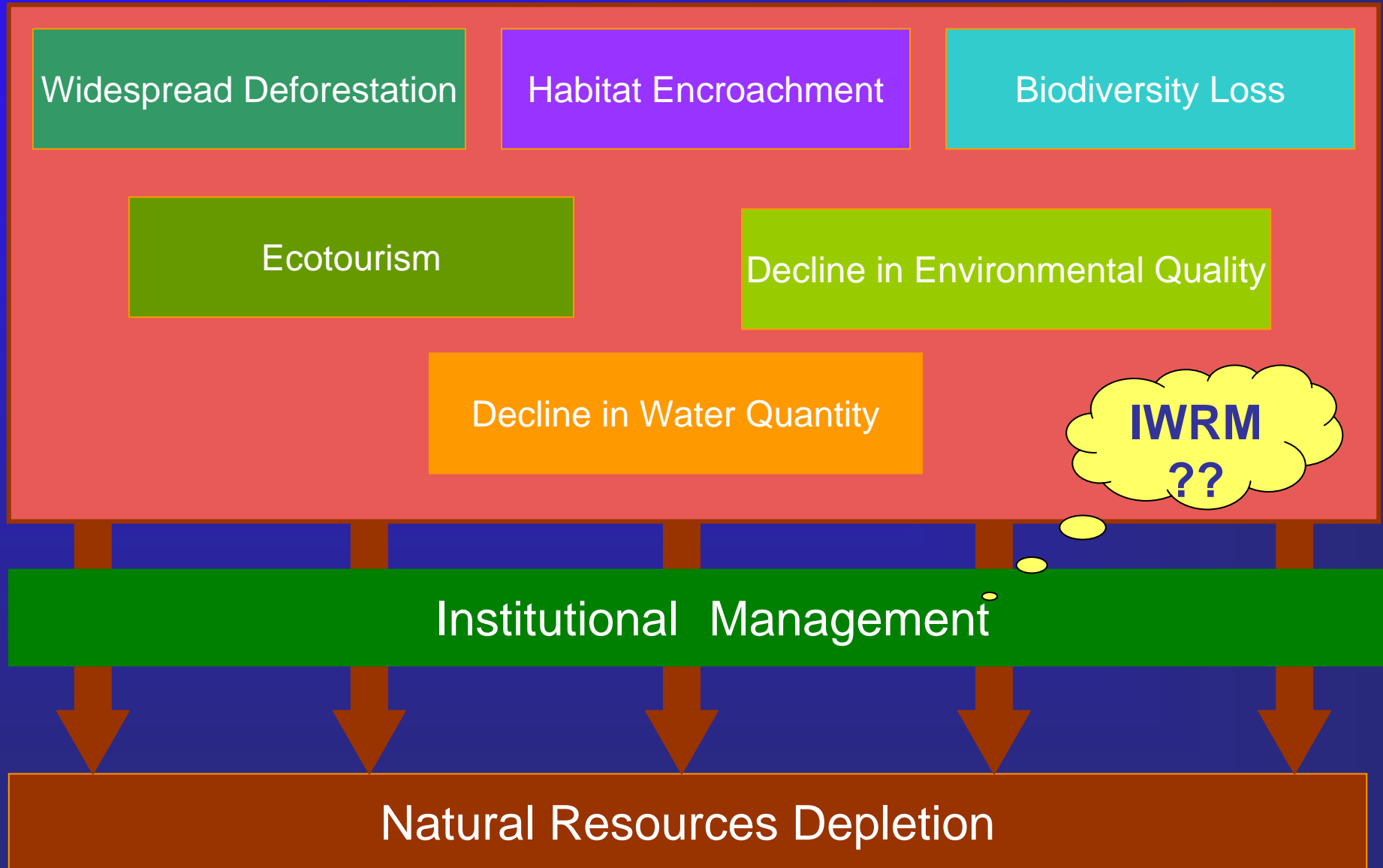
Decline in Environmental Quality

Decline in Water Quantity

IWRM
??

Institutional Management

Natural Resources Depletion



Thank you very much for your attention!

YEM Dararath
Water Resources and Environmental Management Specialist

