

# Mekong Programme

Olivier Cogels  
Chief Executive Officer  
Mekong River Commission Secretariat

WWF - Mexico  
March 2006

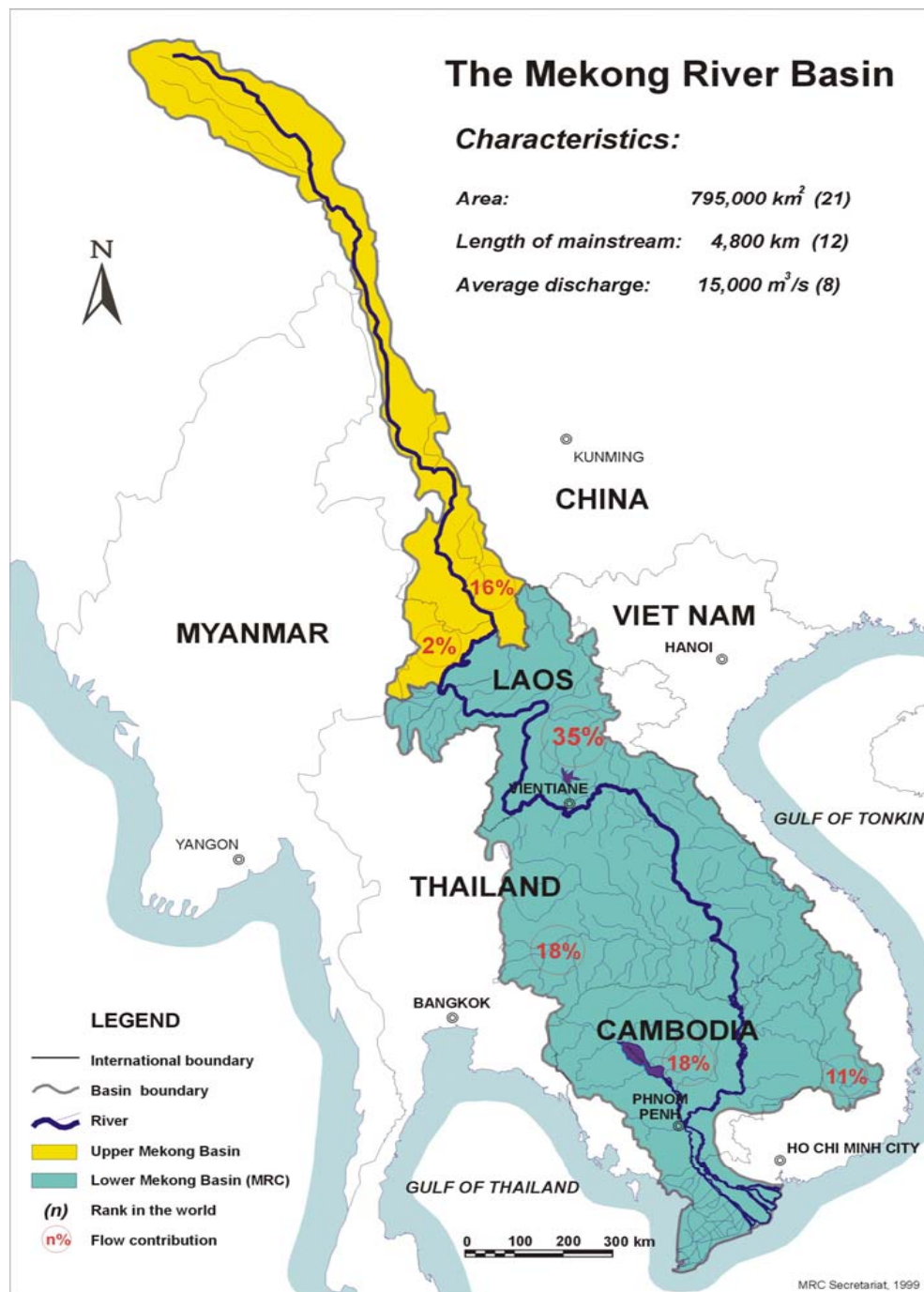


**Regional Cooperation Programme  
for  
Sustainable Development  
of  
the Mekong River Basin**



# IWRM at Basin Scale

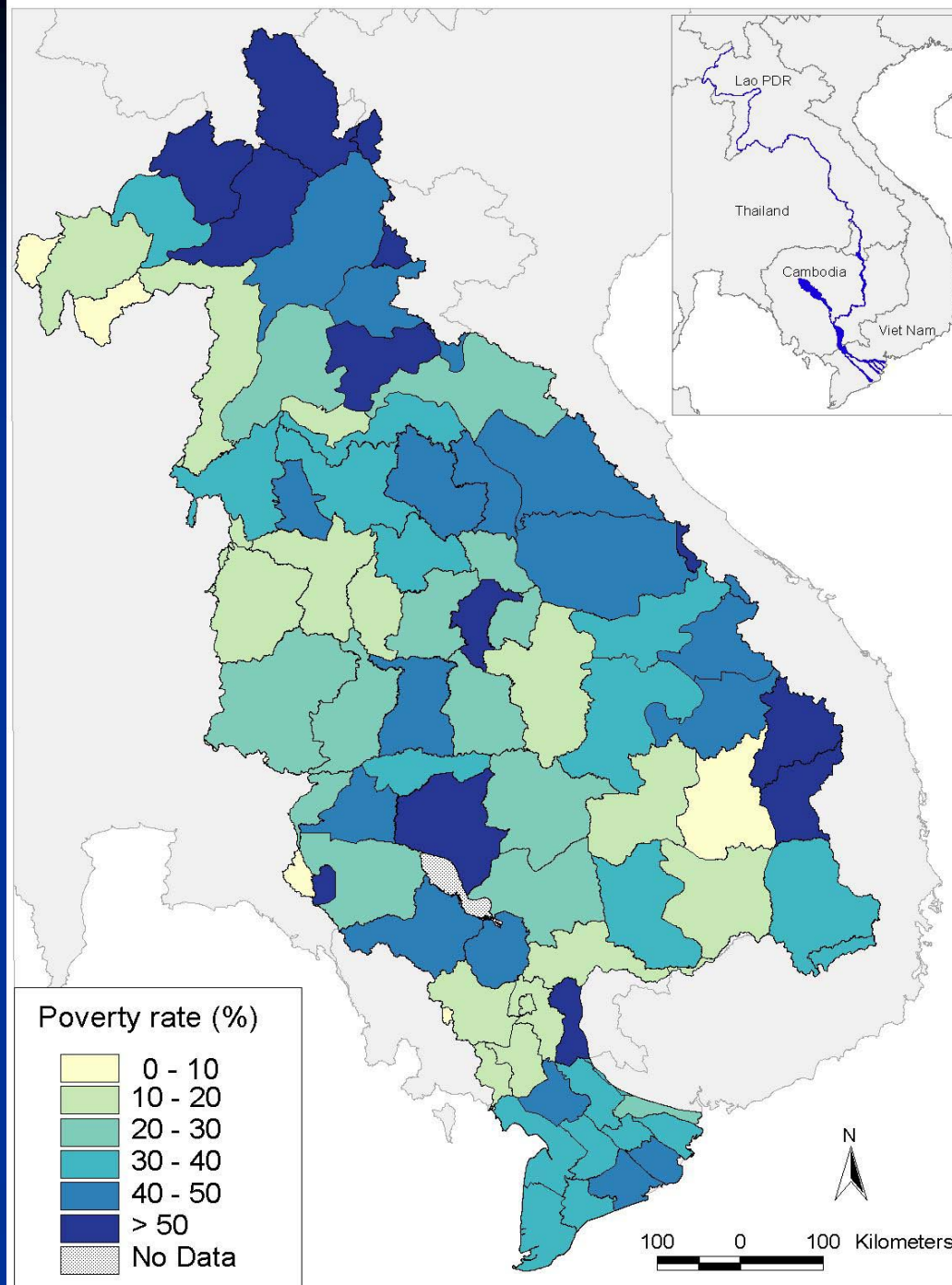
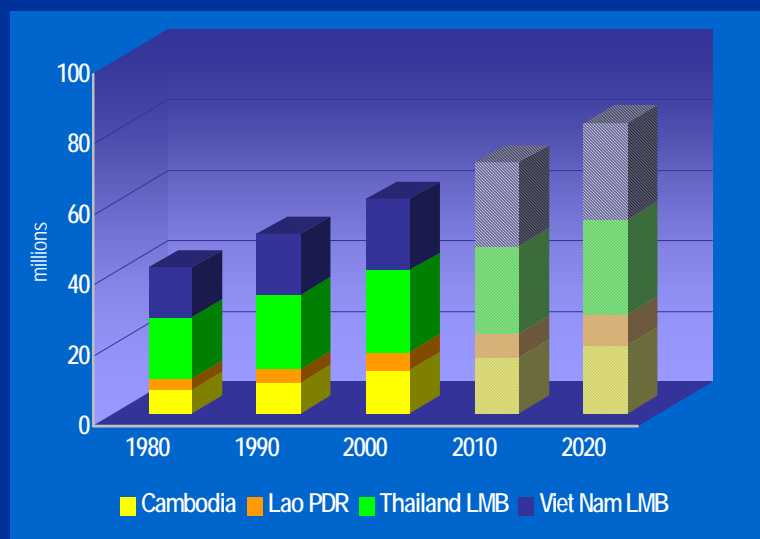
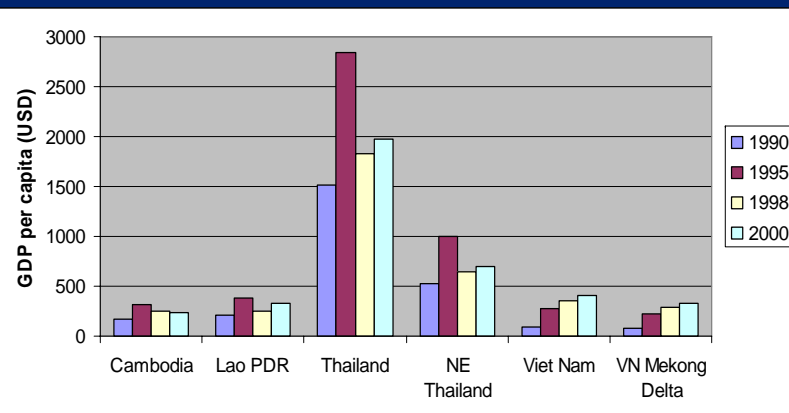




# Mekong River Contribution to the mainstream flow

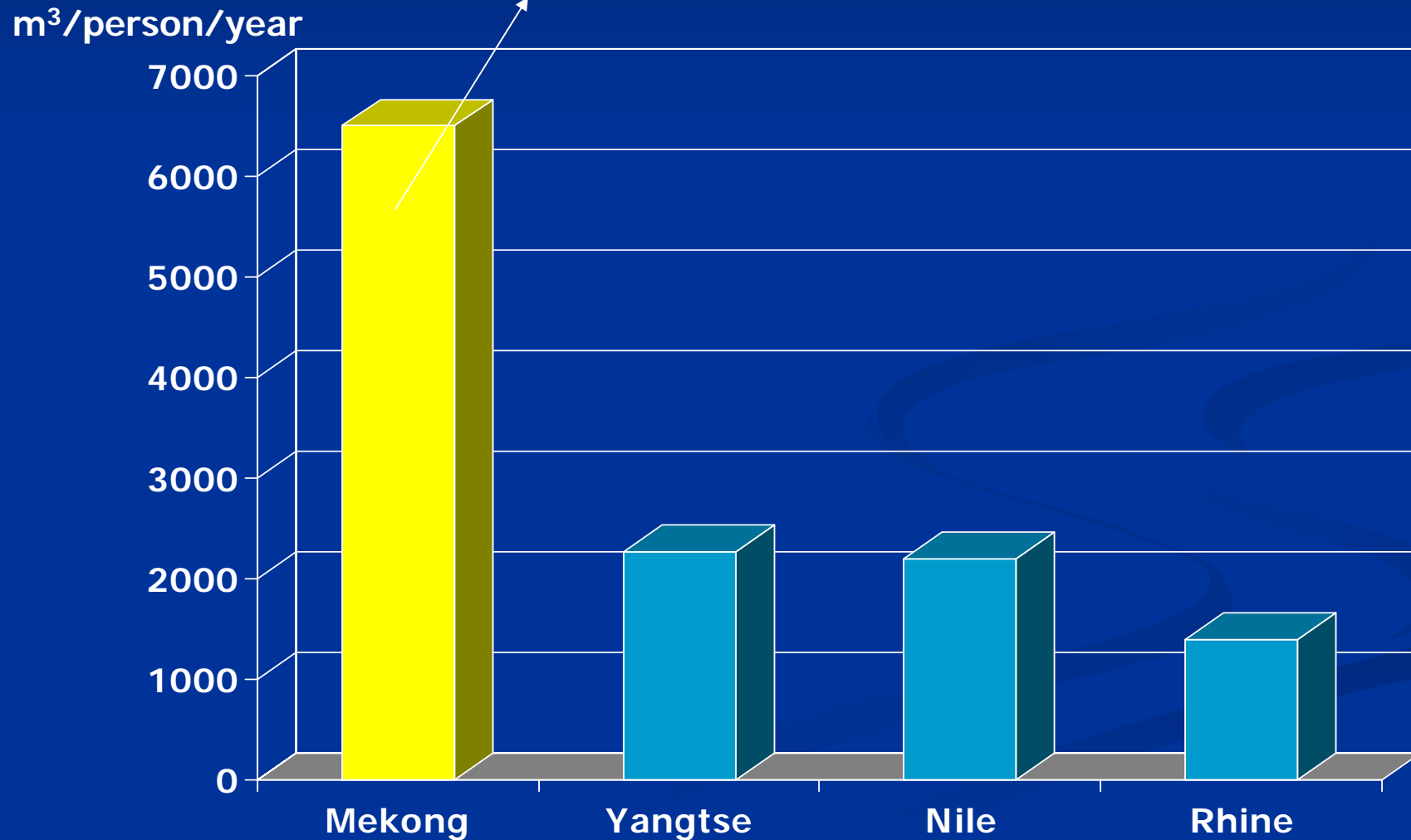
- China – 16%
- Myanmar – 2%
- Cambodia – 18%
- Lao PDR– 35%
- Thailand – 18%
- Viet Nam – 11%

# Poverty alleviation



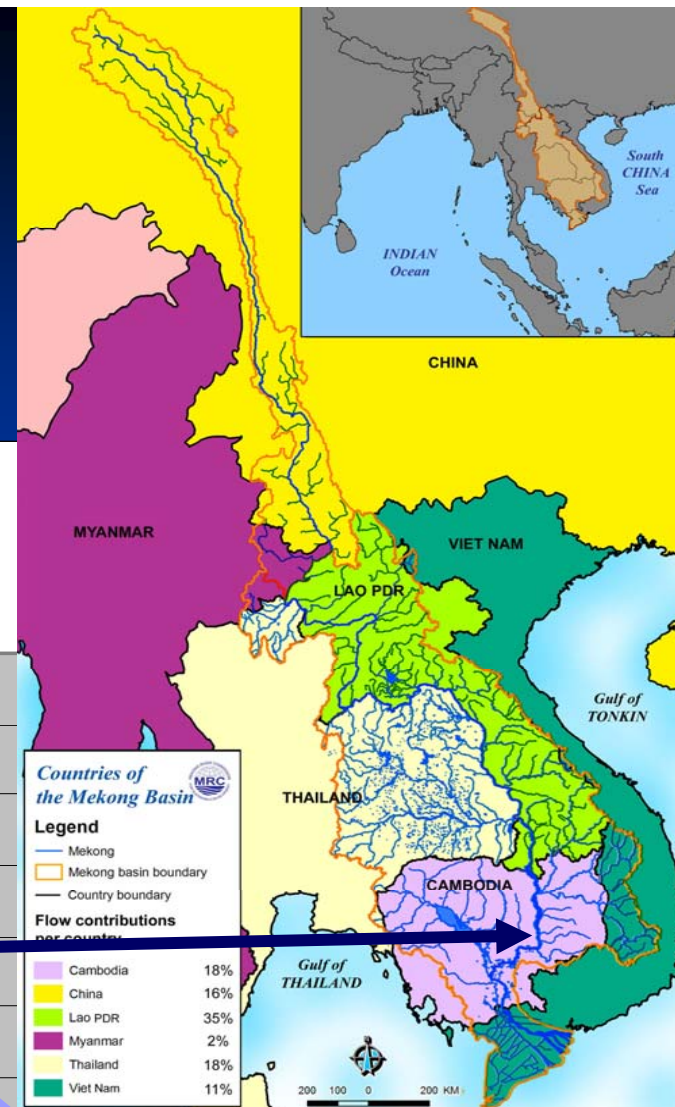
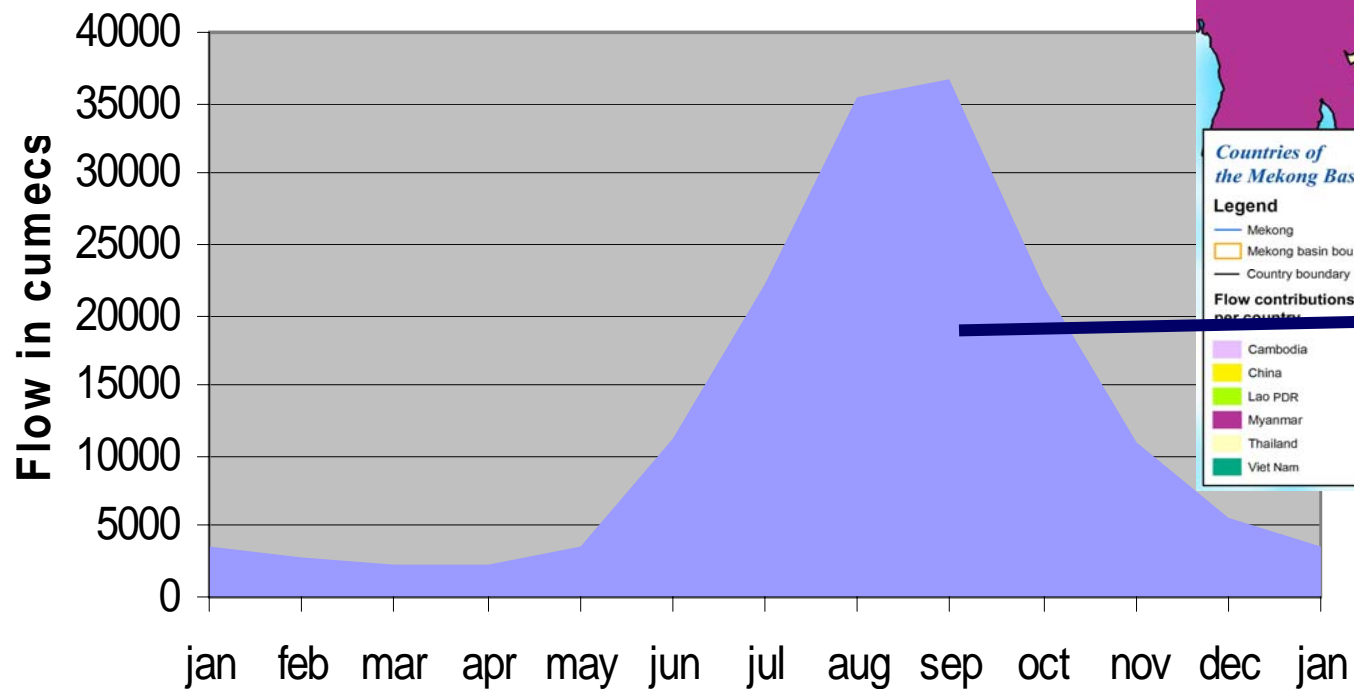
# High volume of water flowing in the river $470 \text{ km}^3/\text{year}$

= **6,500**  $\text{m}^3/\text{person}/\text{year}$



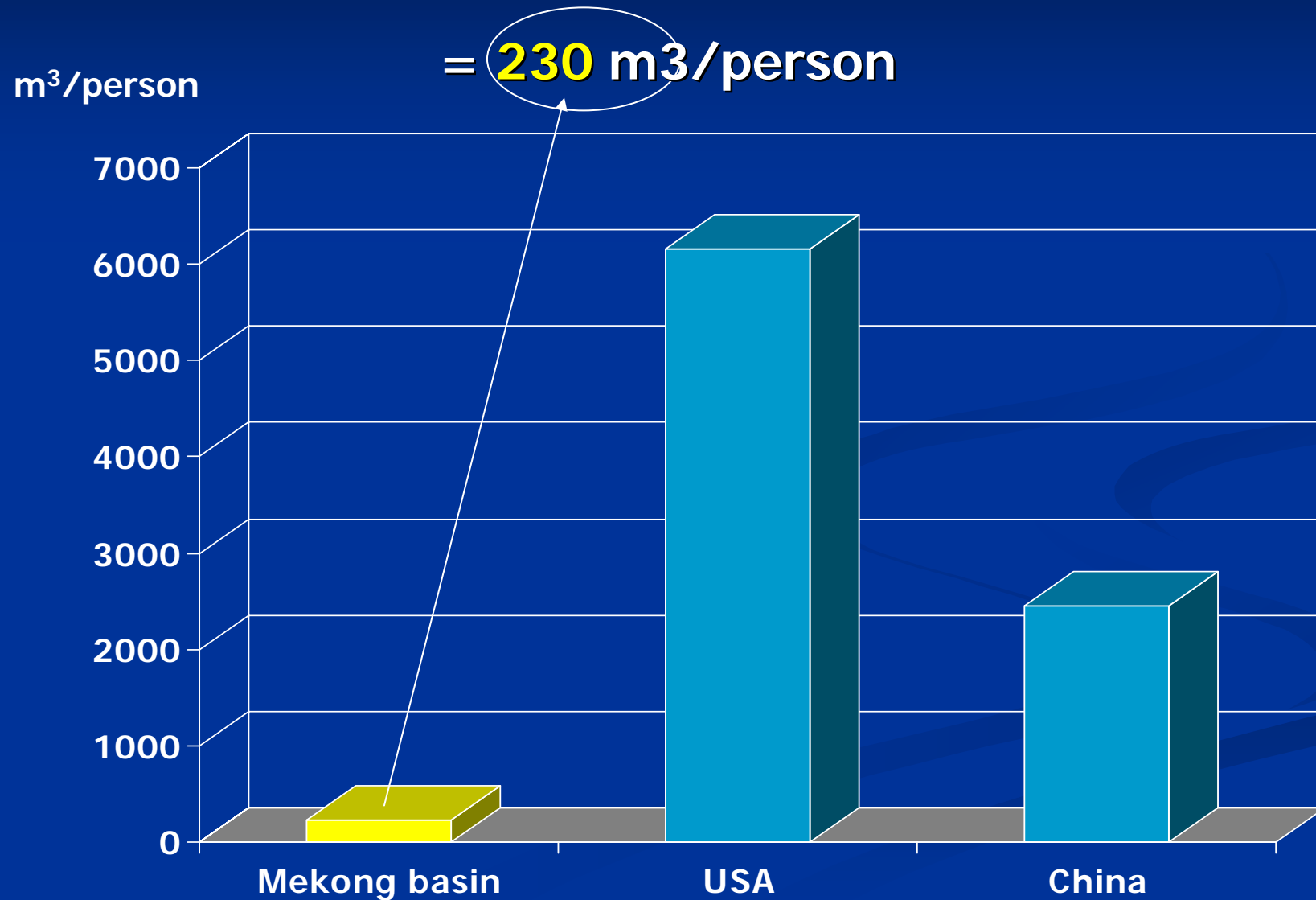
# High seasonal variability

Average flow in Kratie 1960-2004



# Low volume of water stored in reservoirs

20 billion m<sup>3</sup>





# Mekong River Commission - MRC

*To promote and coordinate sustainable management and development of water and related resources*



MRC Secretariat in Vientiane, Lao PDR



# A Programme owned by the Mekong Countries

## Cooperation Agreement signed on 5 April 1995

- Cambodia
- Lao PDR
- Thailand
- Vietnam



## Dialogue partners

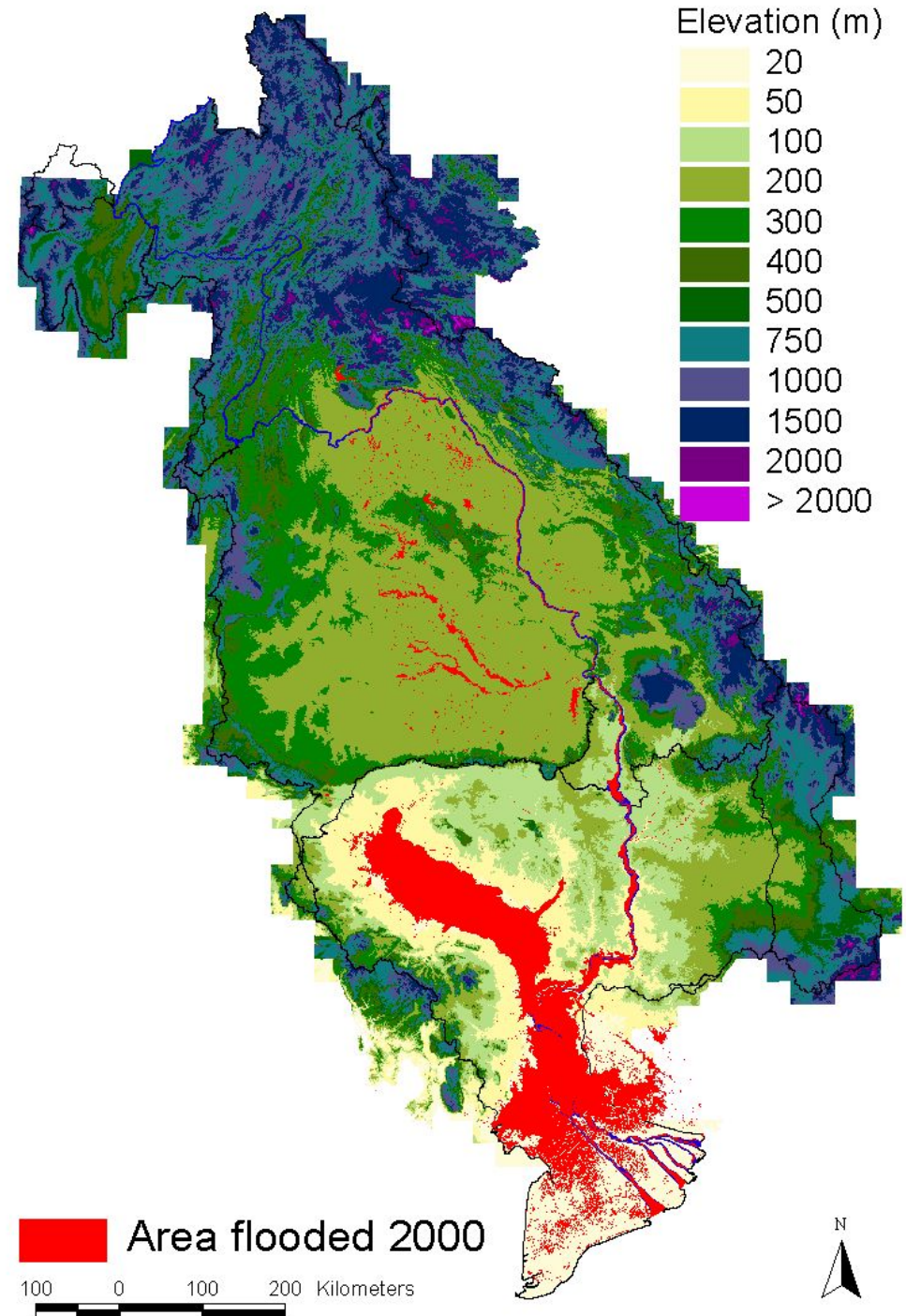
- China
- Myanmar



- Joint planning
- Basin-wide development scenarios
- Integrated approach
- Priorities adopted at council level



# Managing Floods





# Managing Droughts





# Protecting the water quality

industry  
urban development  
agriculture



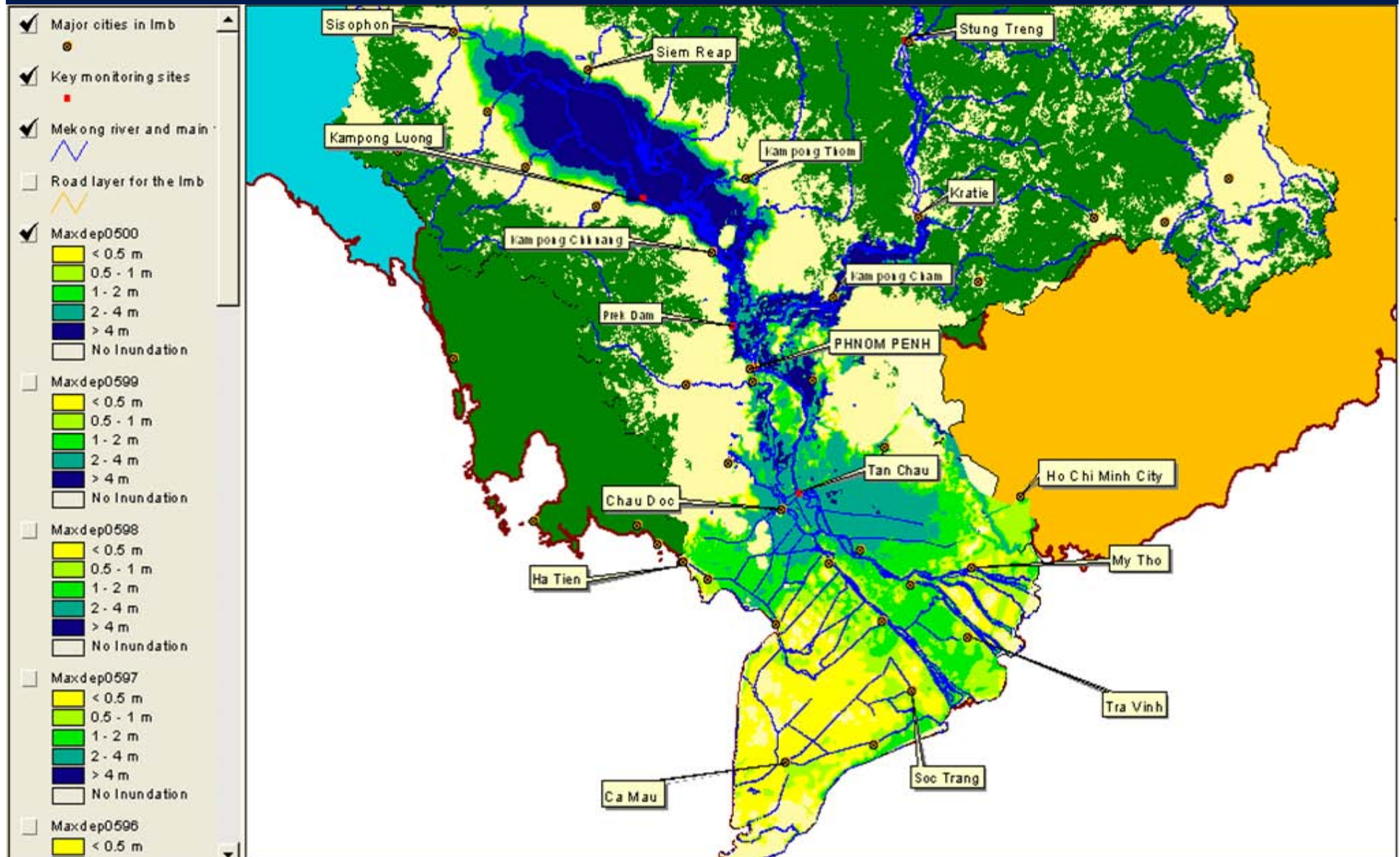


# Maintaining productive fisheries





# Managing the flood pulse in the flood plain

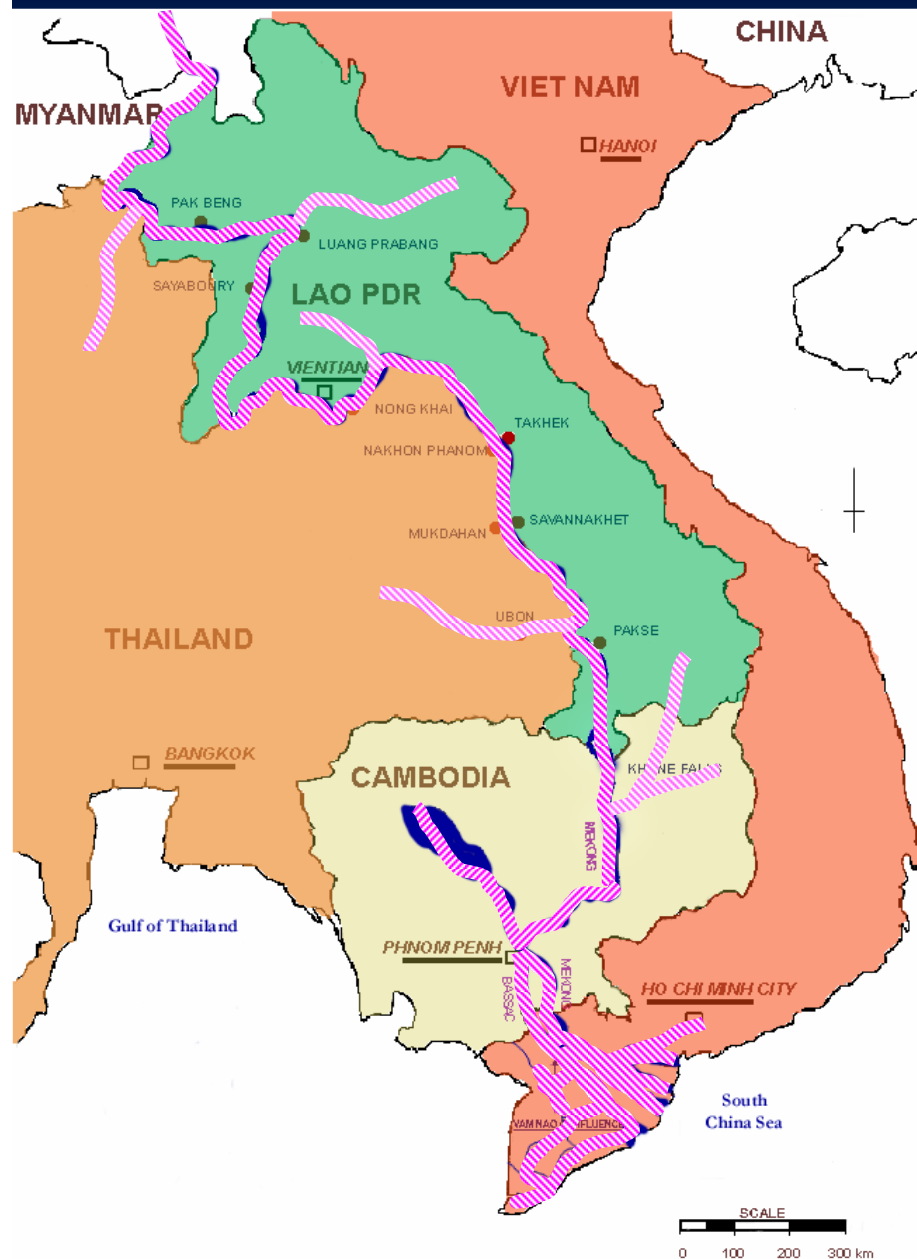


# Maintaining biodiversity and ecological balance of the basin





# Development of inland navigation



# Irrigation

Water withdrawn for  
agriculture, industry and  
domestic use

= 60 km<sup>3</sup>/year out of 530

= less than 12 % of total flow





## Dry season irrigation (2000 data)

Upstream Kratie 350,000 ha

Around Tonle Sap 250,000 ha

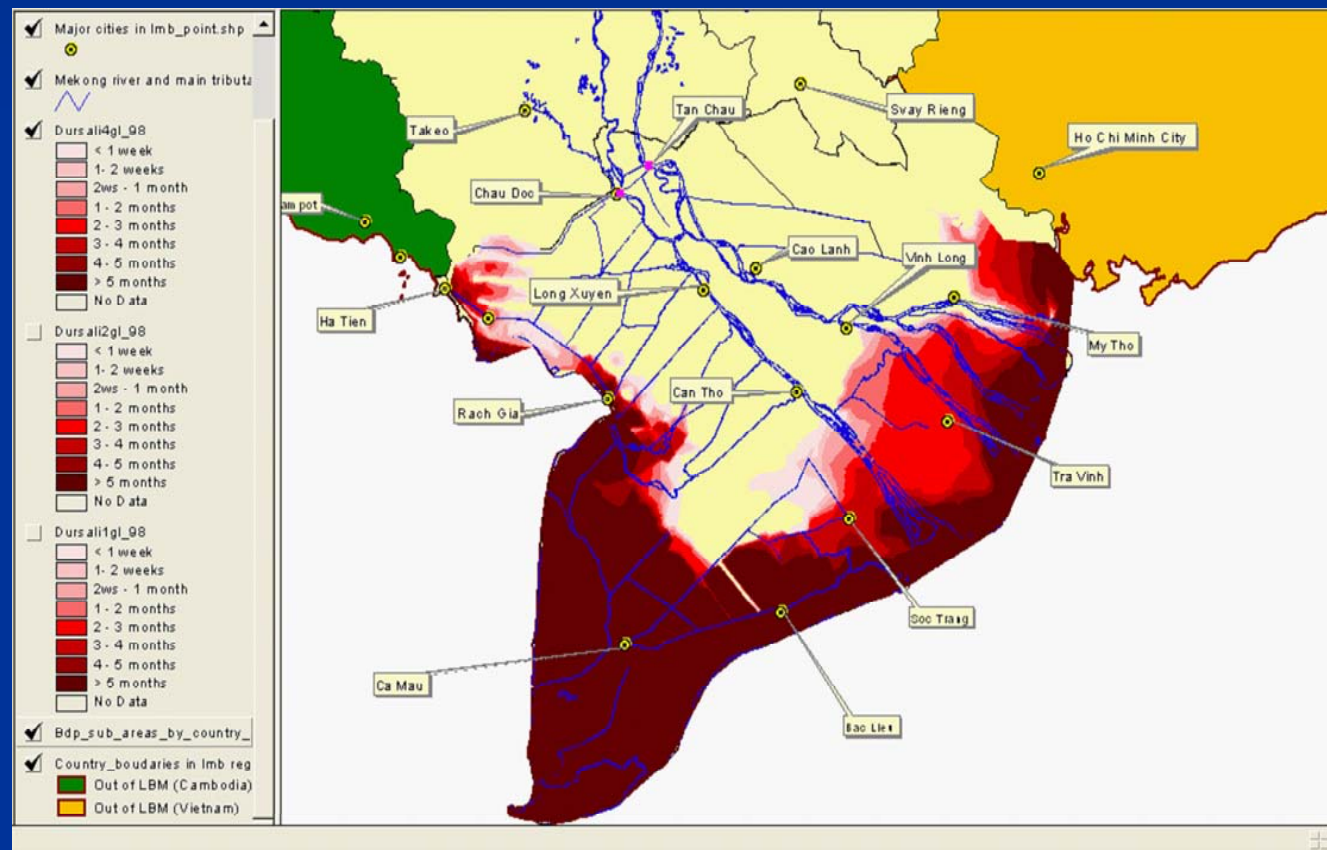
Delta 1,500,000 ha

Total 2.10 million ha



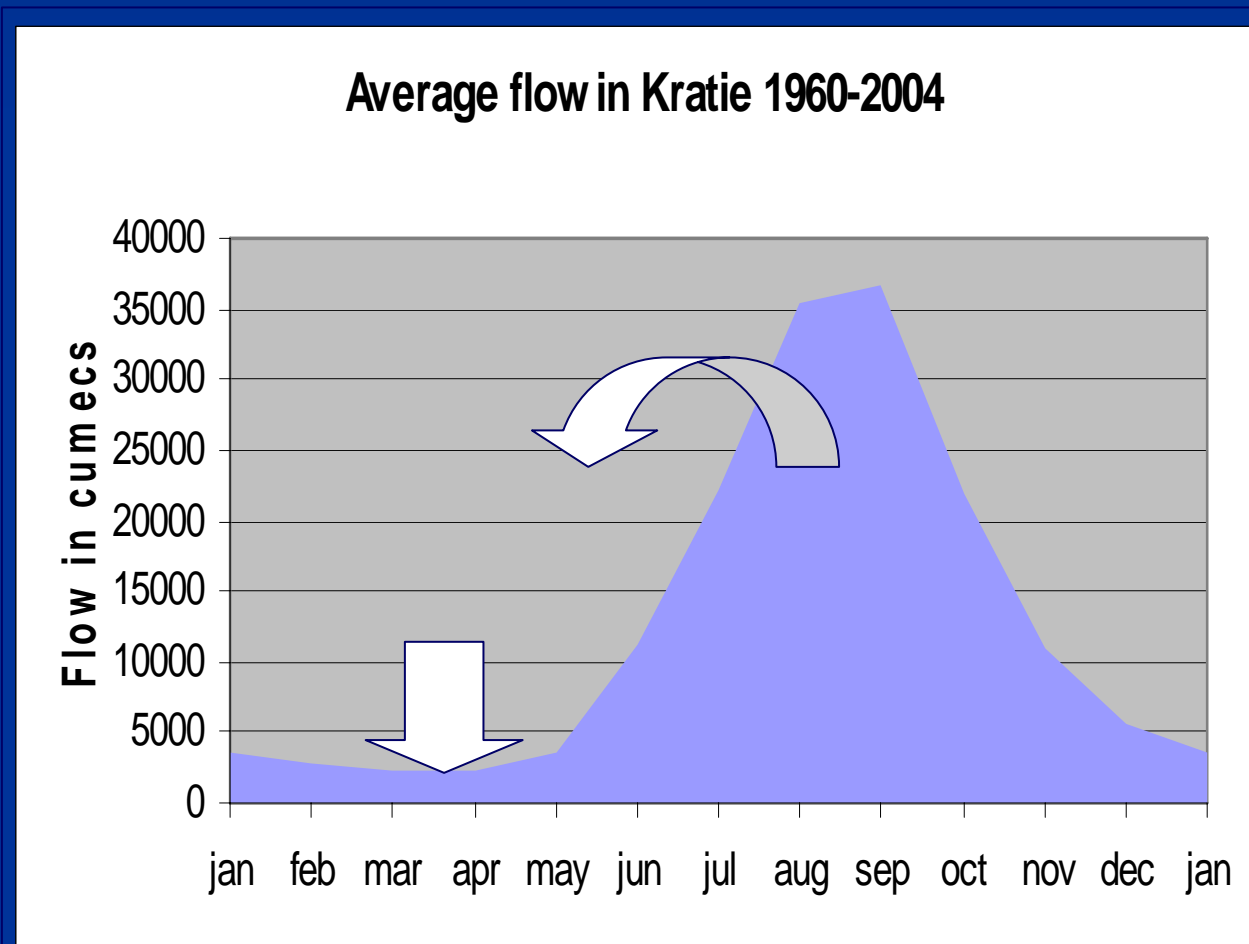
# Risks

- decrease of dry season flow
- increase of saline intrusion in the delta



# Solution

- More efficient irrigation
- More storage in wet season (15 km<sup>3</sup> for 1 million ha)

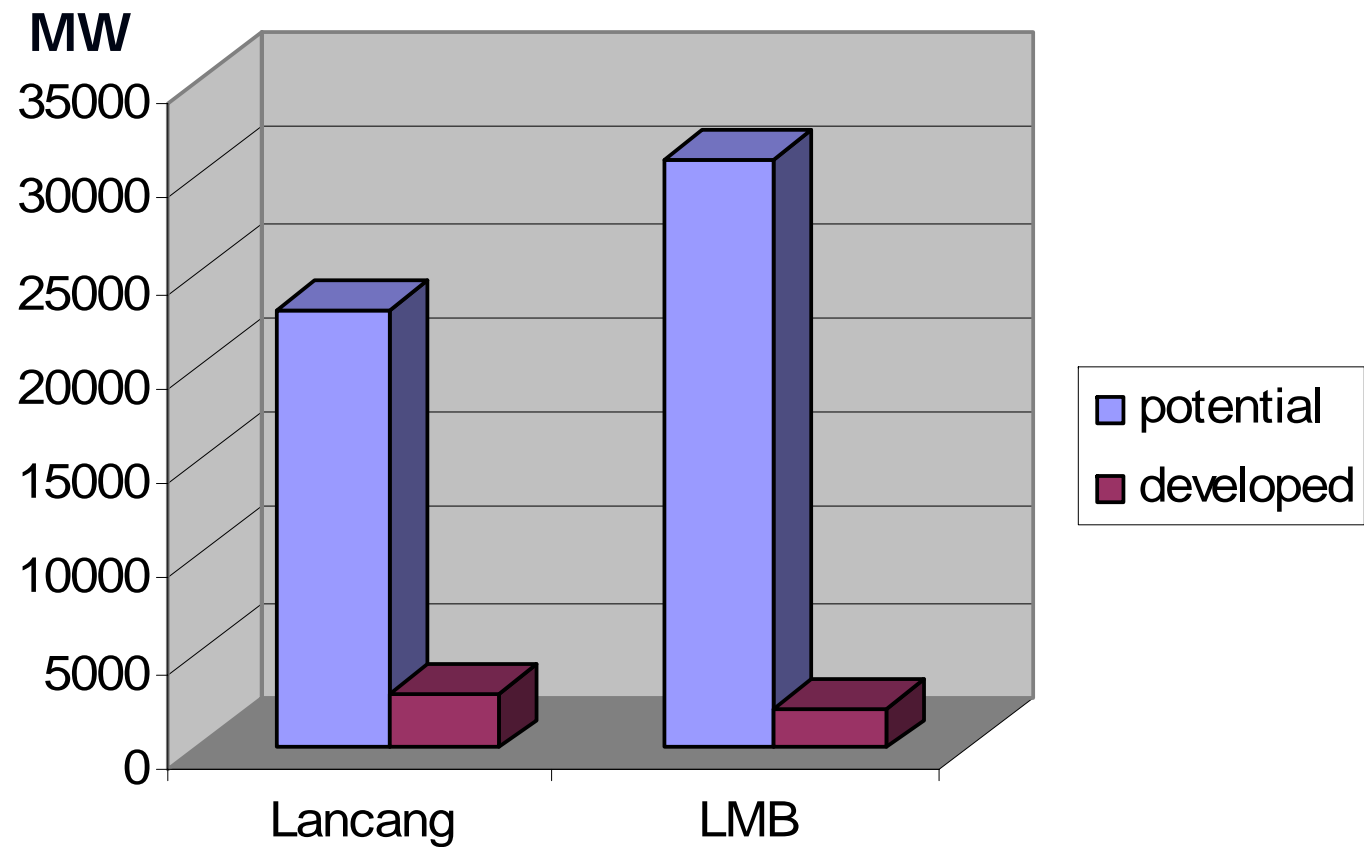


# Developing the hydropower potential

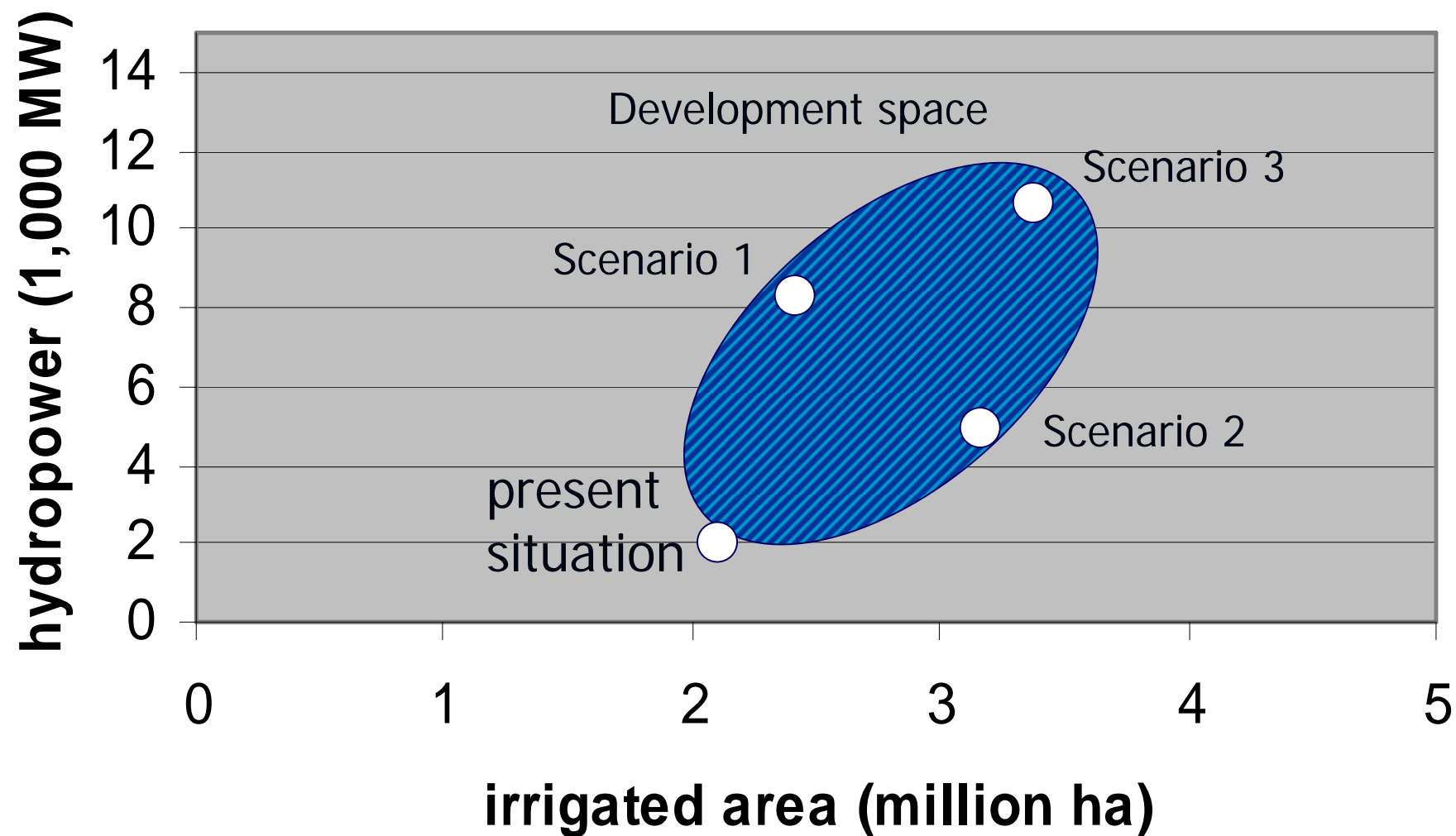




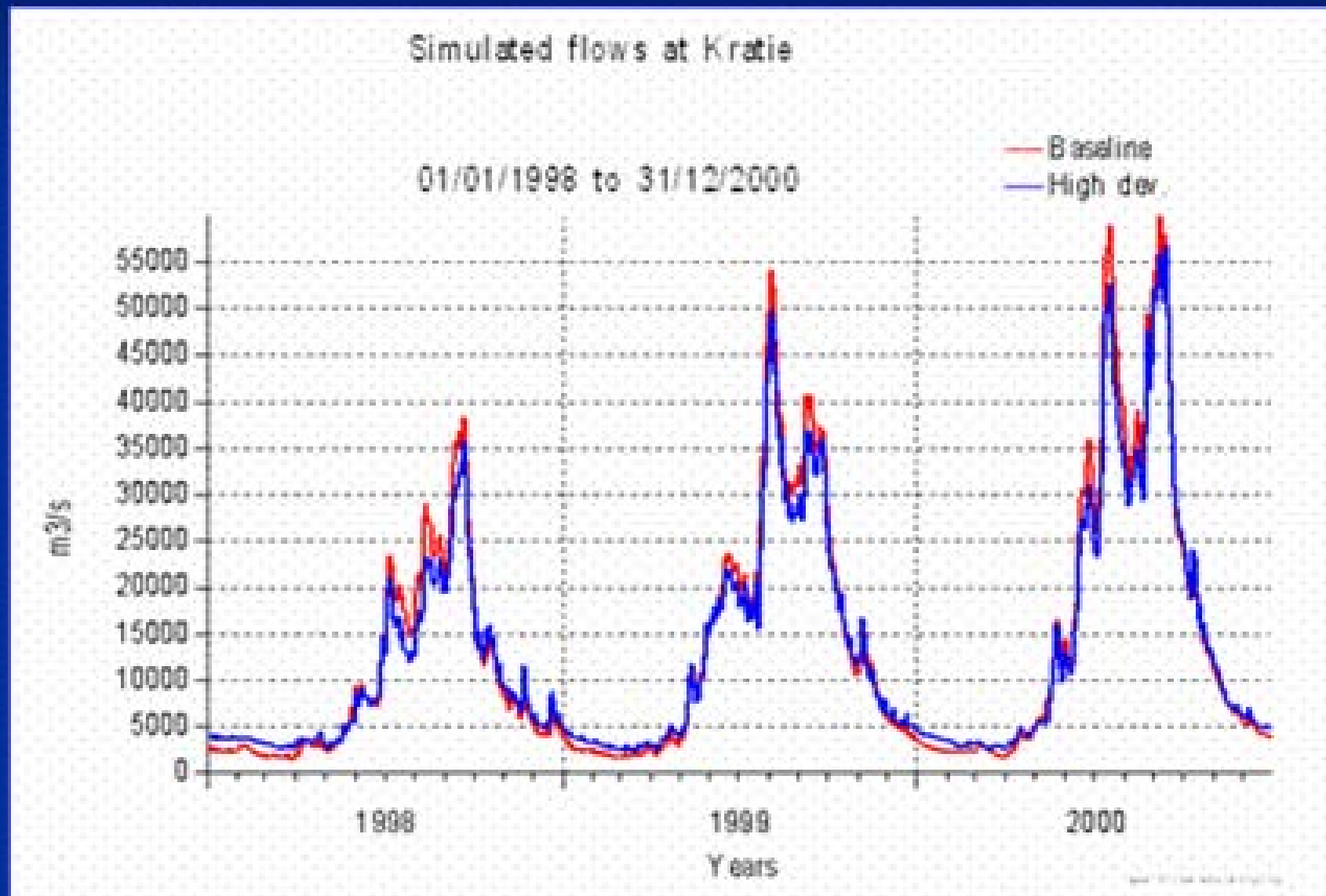
# Hydropower potential



# Analysis of development scenarios



# Impact of scenario 3 on flow regime in Kratie



# Conclusion

- still room for developing the water resources applying the principle of *reasonable* and *equitable* use

Based on:

- **integrated** approach at basin scale (IWRM)
- long-term multi-sectorial **planning** aiming at optimal **win-win solutions**

[www.mrcmekong.org](http://www.mrcmekong.org)







Thank You

