

Franco-Chinese cooperation on integrated water resources management

A successful experience

Jean-Didier Berthault
OE L R -President

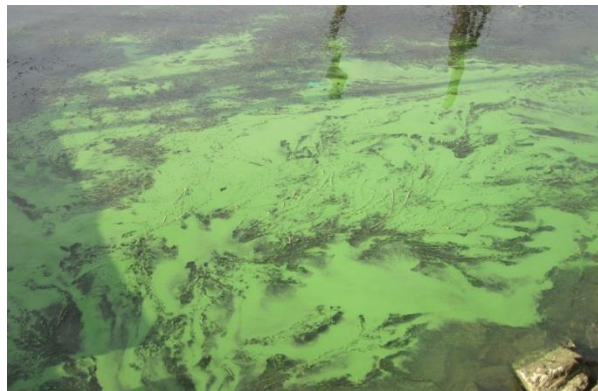
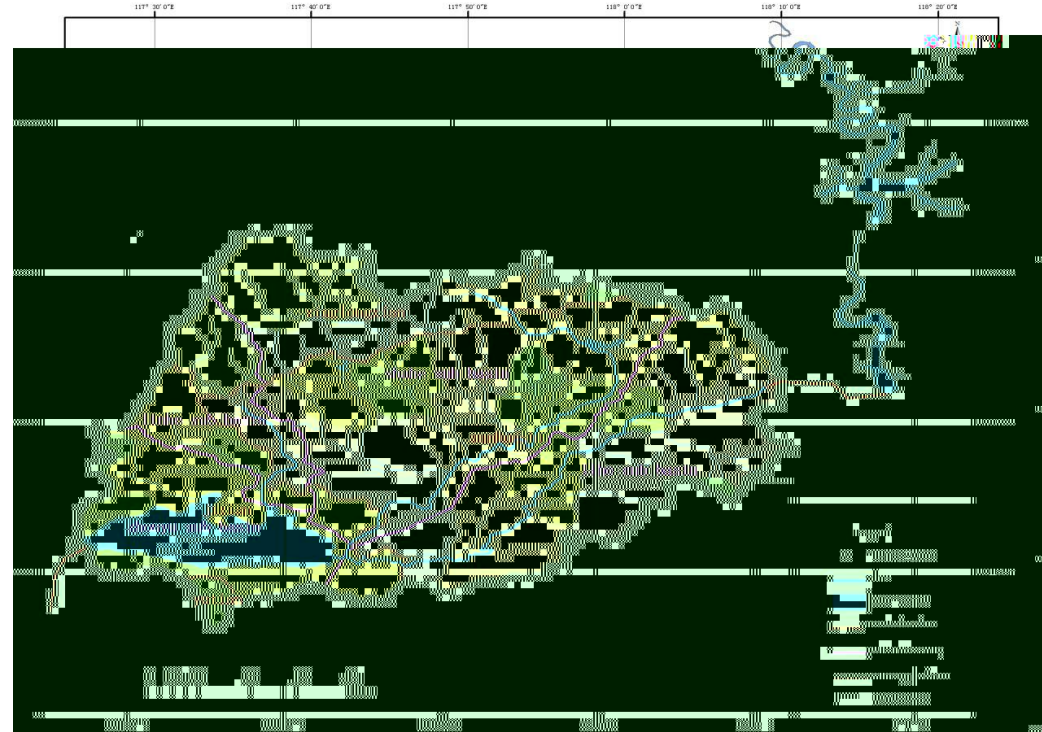
- ❑ **A cooperation initiated in November 2009**
- ❑ **A 1st stage with 2 phases**
- ❑ **Phase 1 : April 2010 - March 2011 for getting to know to each other**
- ❑ **Phase 2 : October 2012 - October 2015**
- ❑ **Experimentation of integrated water resources management applied to Yuqiao Reservoir and Zhou River Catchement**
- ❑ **The partnership:**
 - **Seine-Normandy Water Agency, the public utility for sanitation of Paris Region (SIAAP), Public utility for Seine river reservoir management (Seine Grand Lacs), International Office for Water;**
 - **Haihe Water Conservancy Commission, Water bureau of Tianjin municipality, Water bureau of Hebei province**
- ❑ **Currently, a second stage or phase 3 is implemented**

Geographical location



Phase 1 and 2:
Lihe/Zhouhe basin 2100 km²
860 000 inhabitants
Yuqiao reservoir
500 000 m³

- Bring the French know-how in integrated water resources management in order to improve the water quality of the reservoir Yuqiao**
- Yuqiao reservoir is suffering of major pollution of water resources with eutropication problems caused by an excess of nutrient input**
- A context of strong water scarcity**

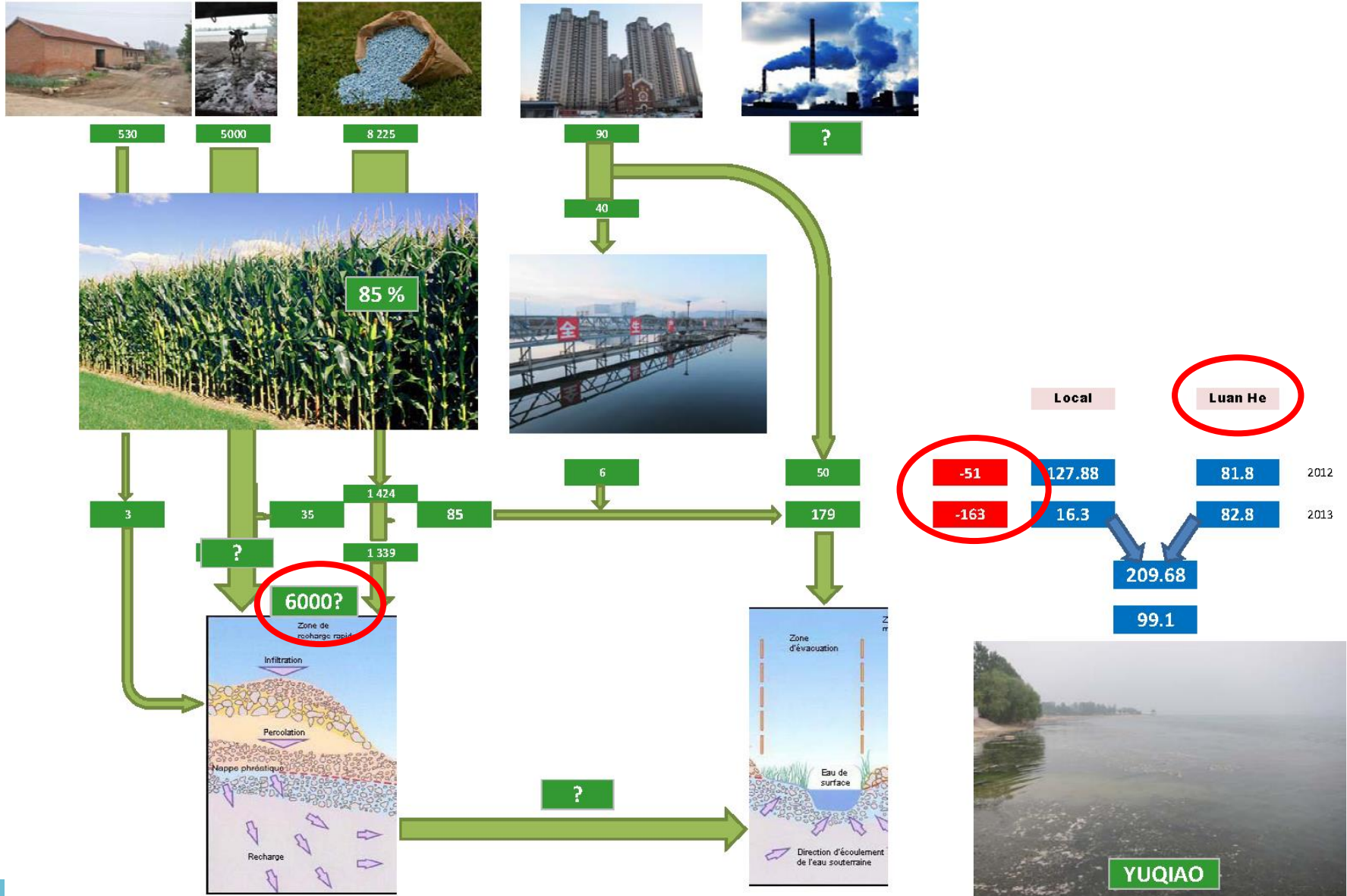


- ❑ **The project implementation includes the following steps:**
 - **Support for the implementation of diagnosis of the different kinds of pressures on water resources,**
 - **Support for the implementation of a management plan and a program of measures to improve water quality**
 - **Setting up a coordination group for water management**

- ❑ **Providing training sessions and expertises**

- ❑ **The pressure of agriculture was demonstrated as well as groundwater pollution**

Global Mass Balance Water Nitrogen and Phosphorus



- ❑ **The program of measures is completed with 10 billions Yuan of works**
- ❑ **Progress in water management governance :**
 - **Implementation of «river basin committee» or a coordination group for water management**
 - **Consultation of different administrations involved in water management**
- ❑ **"2016 Friendship Award" from the Chinese Government for the Foreign Expertise**
- ❑ **Next step: Phase 3 application to a larger river catchement**



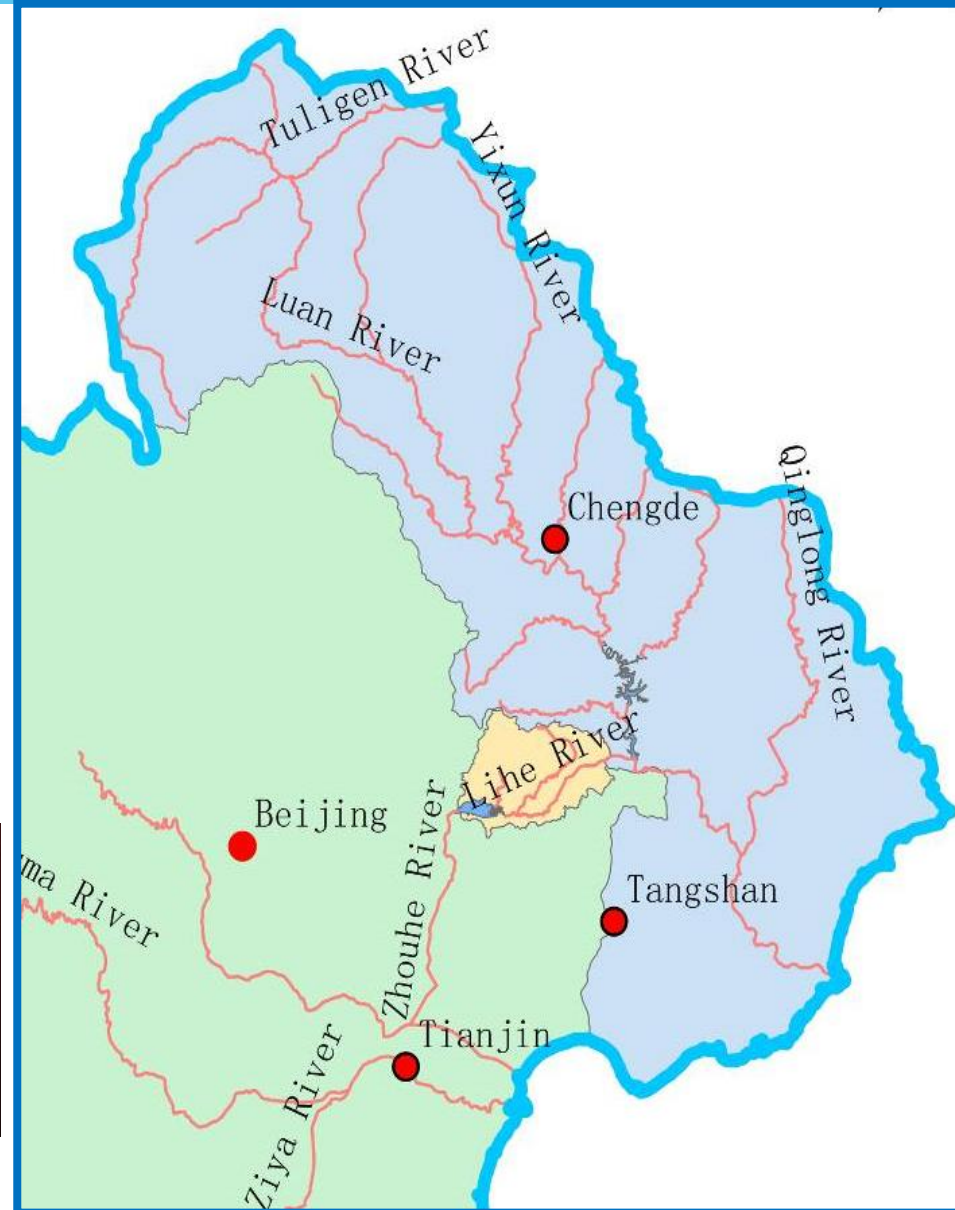
Phase 3 : 2016 - 2018

Luanhe basin : 55 000 km²

Population : 11 M inhabitants

Target : completing the program of measures in 2018

The agreement has been signed on the 1st of February 2016



Thank you for your attention



SIAAP

Service public de l'assainissement francilien

www.siaap.fr